

Prescription for Change

Lesbian and bisexual women's health check 2008

West Midlands

This report is a supplementary report to the Stonewall report **Prescription for Change: Lesbian and bisexual women's health check 2008**. This report provides further regional statistics for each country, each Strategic Health Authority, or healthboard.

Methodology

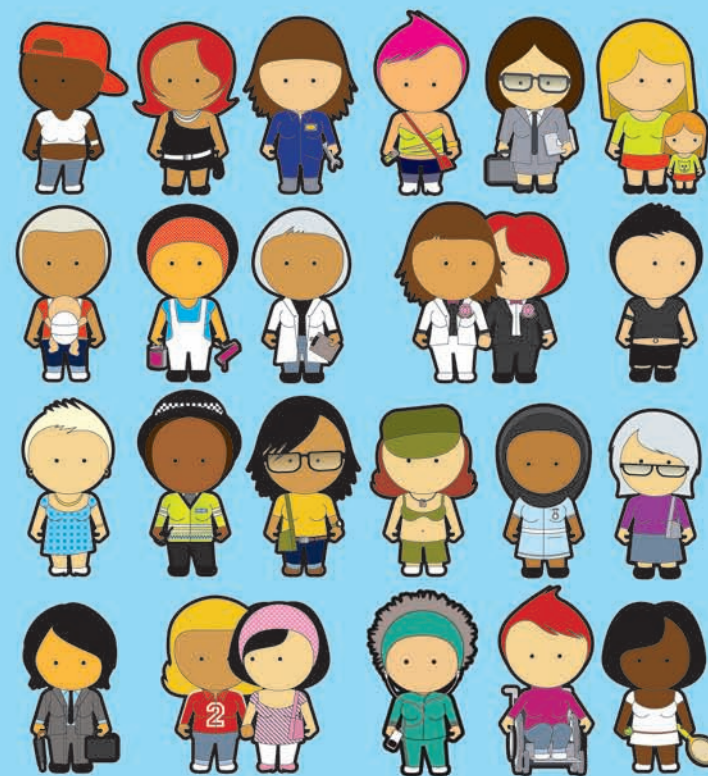
In the summer of 2007, 6178 women responded to an online and paper survey on their health needs and experiences.

The survey included questions on lifestyle (alcohol consumption, smoking, exercise, mental health), medical history and experiences of the health sector. The survey also captured qualitative evidence from participants about their experiences. These are included in the main report.

Guidance on using the data

This data is intended to provide NHS planners with information about their local population, in comparison to national and regional data. For nationwide statistics (Great Britain) for comparison, please refer to the main report. When citing data from this supplementary report please cite Prescription for Change: Lesbian and bisexual women's health check 2008.

Survey results analysed by Sigma Research.



Lesbian & Bisexual Women's Health Survey 2007

West Midlands Strategic Health Authority data report (June 2008, n=425)

Table Contents

- 1a. Sample size by Primary Care Trust (PCT) of residence.
- 1b. Sample size by PCT of residence for following comparisons.
2. Sexual identity (*How do you describe yourself?*); Q4.
3. Current smoker; Q56.
4. Number of days drank ALCOHOL in the last week; Q60+61.
5. Used any of the following DRUGS in the last year (marijuana, ecstasy, LSD, speed, crystal meth, cocaine, crack, ketamine, GHB, heroin); Q63.
6. Ever tested for sexually transmitted infections / vaginal conditions; Q32.
7. Gender of sexual partner in the last 5 years; Q28.
8. Experience of cervical screening; Q29+Q31 (if aged 25-64 and NOT Trans).
9. Frequency of self-checking for lumps or changes in breasts; Q36.
10. In the last year, made an attempt to take your life; Q53.
11. In the last year, deliberate self-harm (not with the intention of killing yourself); Q54.
12. Ever been told you have eating problems; Q40.
13. Ever experienced domestic violence; Q70+72.
14. Self-rating of health; Q8
15. Body Mass Index; calculated from Q17+Q18.
16. Sexuality disclosure to GP and / or health care professionals.
17. Any negative experiences of health care in the last year; Q43.
18. Health care worker assumed heterosexuality.
19. No opportunity to discuss sexual orientation in health-care setting.
20. Not sure of GP surgery's policy on confidentiality.
21. Came out and health care worker still assumed heterosexuality.
22. Came out and health-care worker asked inappropriate questions.
23. Any positive experiences of health care in the last year; Q43.
24. Health care worker did not make inappropriate comments after disclosure.
25. Acknowledgment of sexuality by health worker after disclosure.
26. Health care work provided an opportunity to come out.
27. Health care worker welcomed partner at consultation.
28. Health care worker gave advice accounting for my sexuality.
29. GP surgery had clear policy on confidentiality.
30. GP surgery displayed non-discriminatory policy including sexual orientation.
31. Attended specialist health service for lesbian or bisexual women.

1a. PCT of residence

		Frequency	Percent	Valid Percent	Cumulative Percent
Valid	Heart of B Teaching / B East & North / South Birmingham	124	29.2	29.2	29.2
	Worcestershire	48	11.3	11.3	40.5
	Warwickshire	42	9.9	9.9	50.4
	Coventry Teaching	28	6.6	6.6	56.9
	South Staffordshire	23	5.4	5.4	62.4
	Stoke on Trent	21	4.9	4.9	67.3
	Wolverhampton City	20	4.7	4.7	72.0
	Dudley	17	4.0	4.0	76.0
	Herefordshire	17	4.0	4.0	80.0
	Walsall Teaching	15	3.5	3.5	83.5
	Sandwell	14	3.3	3.3	86.8
	Shropshire County	12	2.8	2.8	89.6
	Telford and Wrekin	11	2.6	2.6	92.2
	North Staffordshire	10	2.4	2.4	94.6
	North Staffordshire / South Staffordshire PCT Unknown (Staffordshire)	10	2.4	2.4	96.9
	Solihull Care Trust	10	2.4	2.4	99.3
	PCT area unknown	3	.7	.7	100.0
	Total	425	100.0	100.0	

1b. PCT of residence for following comparisons

		Frequency	Percent	Valid Percent	Cumulative Percent
Valid	Heart of B Teaching / B East & North / South Birmingham	124	29.2	29.2	29.2
	All other West Midlands	119	28.0	28.0	57.2
	Worcestershire	48	11.3	11.3	68.5
	Warwickshire	42	9.9	9.9	78.4
	Coventry Teaching	28	6.6	6.6	84.9
	South Staffordshire	23	5.4	5.4	90.4
	Stoke on Trent	21	4.9	4.9	95.3
	Wolverhampton City	20	4.7	4.7	100.0
	Total	425	100.0	100.0	

2. Sexual identity

% within PCT

		Sexual identity			Total
		Lesbian	Bisexual	Other	
PCT	Stoke on Trent	85.7%	14.3%		100.0%
	South Staffordshire	87.0%	13.0%		100.0%
	Wolverhampton City	80.0%	10.0%	10.0%	100.0%
	Heart of B Teaching / B East & North / South Birmingham	75.8%	21.0%	3.2%	100.0%
	Coventry Teaching	92.9%	7.1%		100.0%
	Worcestershire	89.6%	10.4%		100.0%
	Warwickshire	83.3%	11.9%	4.8%	100.0%
	All other West Midlands	79.8%	17.6%	2.5%	100.0%
	Total	81.6%	15.8%	2.6%	100.0%

3. Current smoker (cigarettes)

% within PCT

		Current smoker (cigarettes)		Total
		No	Yes	
PCT	Stoke on Trent	70.0%	30.0%	100.0%
	South Staffordshire	65.2%	34.8%	100.0%
	Wolverhampton City	75.0%	25.0%	100.0%
	Heart of B Teaching / B East & North / South Birmingham	73.4%	26.6%	100.0%
	Coventry Teaching	74.1%	25.9%	100.0%
	Worcestershire	68.8%	31.3%	100.0%
	Warwickshire	70.7%	29.3%	100.0%
	All other West Midlands	70.3%	29.7%	100.0%
	Total	71.3%	28.7%	100.0%

4. Number of days drank alcohol in the last week

% within PCT

		Number of days drank alcohol in the last week								Total
		No alcohol in last 7 days	1 day	2 days	3 days	4 days	5 days	6 days	7 days	
PCT	Stoke on Trent	26.3%	47.4%	21.1%	5.3%					100.0%
	South Staffordshire	21.1%	36.8%		10.5%	5.3%		10.5%	15.8%	100.0%
	Wolverhampton City	20.0%	15.0%	30.0%	10.0%	20.0%			5.0%	100.0%
	Heart of B Teaching / B East & North / South Birmingham	19.8%	21.6%	19.0%	9.5%	12.1%	6.0%	6.0%	6.0%	100.0%
	Coventry Teaching	15.4%	30.8%	15.4%	23.1%	3.8%	3.8%		7.7%	100.0%
	Worcestershire	20.0%	20.0%	17.8%	17.8%	6.7%	6.7%		11.1%	100.0%
	Warwickshire	28.2%	17.9%	23.1%	5.1%	2.6%	5.1%	2.6%	15.4%	100.0%
	All other West Midlands	28.8%	18.9%	18.0%	14.4%	5.4%	4.5%	3.6%	6.3%	100.0%
Total		23.3%	22.5%	18.5%	12.2%	7.6%	4.6%	3.5%	7.8%	100.0%

5. Used any of the following drugs in the last year: marijuana, ecstasy, LSD, speed, crystal meth, cocaine, crack, ketamine, GHB, heroin

% within PCT

		Used any drugs in the last year		Total
		Not last year	Yes, last year	
PCT	Stoke on Trent	71.4%	28.6%	100.0%
	South Staffordshire	63.6%	36.4%	100.0%
	Wolverhampton City	73.7%	26.3%	100.0%
	Heart of B Teaching / B East & North / South Birmingham	77.0%	23.0%	100.0%
	Coventry Teaching	85.7%	14.3%	100.0%
	Worcestershire	68.9%	31.1%	100.0%
	Warwickshire	73.8%	26.2%	100.0%
	All other West Midlands	73.9%	26.1%	100.0%
Total		74.4%	25.6%	100.0%

6. Ever tested for STI / vaginal conditions

% within PCT

		Ever tested for STI / vaginal conditions		Total
		No	Yes	
PCT	Stoke on Trent	66.7%	33.3%	100.0%
	South Staffordshire	52.2%	47.8%	100.0%
	Wolverhampton City	40.0%	60.0%	100.0%
	Heart of B Teaching / B East & North / South Birmingham	48.8%	51.2%	100.0%
	Coventry Teaching	74.1%	25.9%	100.0%
	Worcestershire	85.4%	14.6%	100.0%
	Warwickshire	59.5%	40.5%	100.0%
	All other West Midlands	64.4%	35.6%	100.0%
	Total	60.7%	39.3%	100.0%

7. Gender of sexual partners in last 5 years

% within PCT

		Gender of sexual partners in last 5 years				Total
		Women only	Men only	Both women and men	No one	
PCT	Stoke on Trent	57.1%		23.8%	19.0%	100.0%
	South Staffordshire	52.2%		47.8%		100.0%
	Wolverhampton City	75.0%		25.0%		100.0%
	Heart of B Teaching / B East & North / South Birmingham	62.9%	2.4%	32.3%	2.4%	100.0%
	Coventry Teaching	67.9%		28.6%	3.6%	100.0%
	Worcestershire	77.1%		20.8%	2.1%	100.0%
	Warwickshire	59.5%		35.7%	4.8%	100.0%
	All other West Midlands	68.6%	.8%	26.3%	4.2%	100.0%
	Total	65.8%	.9%	29.5%	3.8%	100.0%

8. Experience of cervical screening (age 25-64, NOT Trans)

% within PCT

		Experience of cervical screening				Total
		Never had cervical smear	I have had a smear test in the last 3 years	I have had a smear test in the past 3-5 years	I had a smear test more than 5 years ago	
PCT	Stoke on Trent	21.4%	64.3%		14.3%	100.0%
	South Staffordshire	6.3%	62.5%	12.5%	18.8%	100.0%
	Wolverhampton City	15.4%	61.5%		23.1%	100.0%
	Heart of B Teaching / B East & North / South Birmingham	20.9%	49.5%	15.4%	14.3%	100.0%
	Coventry Teaching	13.3%	60.0%		26.7%	100.0%
	Worcestershire	21.9%	53.1%	21.9%	3.1%	100.0%
	Warwickshire	12.5%	68.8%	18.8%		100.0%
	All other West Midlands	15.4%	59.0%	17.9%	7.7%	100.0%
	Total	17.5%	56.4%	14.5%	11.6%	100.0%

9. Frequency of self-checking breasts

% within PCT

		Frequency of self-checking breasts			Total
		No, I don't currently self-check	Yes, sometimes (every few months)	Yes, regularly (every month)	
PCT	Stoke on Trent	15.0%	45.0%	40.0%	100.0%
	South Staffordshire	9.1%	68.2%	22.7%	100.0%
	Wolverhampton City	5.0%	65.0%	30.0%	100.0%
	Heart of B Teaching / B East & North / South Birmingham	13.7%	52.4%	33.9%	100.0%
	Coventry Teaching	17.9%	53.6%	28.6%	100.0%
	Worcestershire	8.3%	62.5%	29.2%	100.0%
	Warwickshire	19.0%	40.5%	40.5%	100.0%
	All other West Midlands	14.4%	48.3%	37.3%	100.0%
	Total	13.5%	52.4%	34.1%	100.0%

10. In the last year, made any attempt to take your life

% within PCT

		In the last year, made any attempt to take your life		Total
		No	Yes	
PCT	Stoke on Trent	100.0%		100.0%
	South Staffordshire	86.4%	13.6%	100.0%
	Wolverhampton City	94.7%	5.3%	100.0%
	Heart of B Teaching / B East & North / South Birmingham	94.3%	5.7%	100.0%
	Coventry Teaching	92.9%	7.1%	100.0%
	Worcestershire	93.8%	6.3%	100.0%
	Warwickshire	92.9%	7.1%	100.0%
	All other West Midlands	97.5%	2.5%	100.0%
Total		94.8%	5.2%	100.0%

11. In the last year, deliberate self-harm (with no the intention of killing yourself)

% within PCT

		In the last year, deliberate self-harm (with no the intention of killing yourself)		Total
		No	Yes	
PCT	Stoke on Trent	81.0%	19.0%	100.0%
	South Staffordshire	72.7%	27.3%	100.0%
	Wolverhampton City	85.0%	15.0%	100.0%
	Heart of B Teaching / B East & North / South Birmingham	83.1%	16.9%	100.0%
	Coventry Teaching	78.6%	21.4%	100.0%
	Worcestershire	83.3%	16.7%	100.0%
	Warwickshire	82.9%	17.1%	100.0%
	All other West Midlands	89.8%	10.2%	100.0%
Total		84.1%	15.9%	100.0%

12. Ever been told you have eating problem

% within PCT

		Ever been told you have eating problem		Total
		No	Yes	
PCT	Stoke on Trent	81.0%	19.0%	100.0%
	South Staffordshire	69.6%	30.4%	100.0%
	Wolverhampton City	65.0%	35.0%	100.0%
	Heart of B Teaching / B East & North / South Birmingham	75.0%	25.0%	100.0%
	Coventry Teaching	81.5%	18.5%	100.0%
	Worcestershire	75.0%	25.0%	100.0%
	Warwickshire	92.7%	7.3%	100.0%
	All other West Midlands	81.4%	18.6%	100.0%
	Total	78.4%	21.6%	100.0%

13. Ever experienced domestic violence

% within PCT

		Ever experienced domestic violence			Total
		No never	Yes, from a male	Yes, from a female	
PCT	Stoke on Trent	76.2%	9.5%	14.3%	100.0%
	South Staffordshire	59.1%	22.7%	18.2%	100.0%
	Wolverhampton City	57.9%	26.3%	15.8%	100.0%
	Heart of B Teaching / B East & North / South Birmingham	72.6%	8.1%	19.4%	100.0%
	Coventry Teaching	77.8%	11.1%	11.1%	100.0%
	Worcestershire	68.8%	10.4%	20.8%	100.0%
	Warwickshire	81.0%	2.4%	16.7%	100.0%
	All other West Midlands	68.6%	12.7%	18.6%	100.0%
	Total	71.0%	10.9%	18.1%	100.0%

14. Self-rating of health

% within PCT

		Self-rating of health				Total
		Excellent	Good	Fair	Poor	
PCT	Stoke on Trent	4.8%	85.7%	9.5%		100.0%
	South Staffordshire	8.7%	73.9%	8.7%	8.7%	100.0%
	Wolverhampton City	25.0%	60.0%	10.0%	5.0%	100.0%
	Heart of B Teaching / B East & North / South Birmingham	18.5%	58.1%	21.0%	2.4%	100.0%
	Coventry Teaching	32.1%	50.0%	17.9%		100.0%
	Worcestershire	22.9%	64.6%	12.5%		100.0%
	Warwickshire	23.8%	50.0%	21.4%	4.8%	100.0%
	All other West Midlands	21.8%	54.6%	21.0%	2.5%	100.0%
Total		20.5%	58.8%	18.1%	2.6%	100.0%

15. BMI categories

% within PCT

		BMI categories					Total
		Underweight (<18.5)	Normal (18.5 - 24.99)	Overweight (25 - 29.99)	Obese (30+)	Very Obese (40+)	
PCT	Stoke on Trent	10.0%	45.0%	25.0%	20.0%		100.0%
	South Staffordshire		54.5%	22.7%	22.7%		100.0%
	Wolverhampton City		36.8%	31.6%	15.8%	15.8%	100.0%
	Heart of B Teaching / B East & North / South Birmingham	.8%	52.5%	27.1%	14.4%	5.1%	100.0%
	Coventry Teaching	3.6%	42.9%	25.0%	14.3%	14.3%	100.0%
	Worcestershire	2.2%	62.2%	13.3%	20.0%	2.2%	100.0%
	Warwickshire	4.9%	63.4%	22.0%	9.8%		100.0%
	All other West Midlands	2.6%	44.0%	26.7%	20.7%	6.0%	100.0%
Total		2.4%	50.6%	24.7%	17.1%	5.1%	100.0%

16. Sexuality disclosure to GP or health care professionals

% within PCT

		Sexuality disclosure to GP or health care professionals					Total
		All or almost all	More than half	About half	Less than half	Few or none	
PCT	Stoke on Trent	28.6%		9.5%	4.8%	57.1%	100.0%
	South Staffordshire	39.1%	8.7%	8.7%		43.5%	100.0%
	Wolverhampton City	55.0%	10.0%	5.0%	10.0%	20.0%	100.0%
	Heart of B Teaching / B East & North / South Birmingham	33.3%	10.0%	3.3%	6.7%	46.7%	100.0%
	Coventry Teaching	15.4%	3.8%	3.8%		76.9%	100.0%
	Worcestershire	31.9%	2.1%	2.1%	12.8%	51.1%	100.0%
	Warwickshire	14.6%	2.4%	22.0%	7.3%	53.7%	100.0%
	All other West Midlands	28.0%	4.2%	2.5%	7.6%	57.6%	100.0%
Total		29.8%	5.8%	5.5%	7.0%	51.9%	100.0%

17. Any NEGATIVE experiences of health care in the last year

% within PCT

		Any NEGATIVE experiences of health care in the last year		Total
		No none	Yes	
PCT	Stoke on Trent	30.0%	70.0%	100.0%
	South Staffordshire	23.8%	76.2%	100.0%
	Wolverhampton City	57.9%	42.1%	100.0%
	Heart of B Teaching / B East & North / South Birmingham	37.2%	62.8%	100.0%
	Coventry Teaching	50.0%	50.0%	100.0%
	Worcestershire	52.2%	47.8%	100.0%
	Warwickshire	47.5%	52.5%	100.0%
	All other West Midlands	48.2%	51.8%	100.0%
Total		43.7%	56.3%	100.0%

18. Health care worker assumed heterosexuality

% within PCT

		Health care worker assumed heterosexuality		Total
		No	Yes	
PCT	Stoke on Trent	45.0%	55.0%	100.0%
	South Staffordshire	36.4%	63.6%	100.0%
	Wolverhampton City	63.2%	36.8%	100.0%
	Heart of B Teaching / B East & North / South Birmingham	52.5%	47.5%	100.0%
	Coventry Teaching	67.9%	32.1%	100.0%
	Worcestershire	69.6%	30.4%	100.0%
	Warwickshire	65.0%	35.0%	100.0%
	All other West Midlands	60.9%	39.1%	100.0%
Total		58.2%	41.8%	100.0%

19. No opportunity to discuss sexual orientation in health-care setting

% within PCT

		No opportunity to discuss sexual orientation in health-care setting		Total
		No	Yes	
PCT	Stoke on Trent	65.0%	35.0%	100.0%
	South Staffordshire	68.2%	31.8%	100.0%
	Wolverhampton City	73.7%	26.3%	100.0%
	Heart of B Teaching / B East & North / South Birmingham	73.0%	27.0%	100.0%
	Coventry Teaching	67.9%	32.1%	100.0%
	Worcestershire	76.1%	23.9%	100.0%
	Warwickshire	80.0%	20.0%	100.0%
	All other West Midlands	76.4%	23.6%	100.0%
Total		74.0%	26.0%	100.0%

20. Not sure of GP surgery's policy on confidentiality

% within PCT

		Not sure of GP surgery's policy on confidentiality		Total
		No	Yes	
PCT	Stoke on Trent	75.0%	25.0%	100.0%
	South Staffordshire	95.5%	4.5%	100.0%
	Wolverhampton City	84.2%	15.8%	100.0%
	Heart of B Teaching / B East & North / South Birmingham	86.9%	13.1%	100.0%
	Coventry Teaching	82.1%	17.9%	100.0%
	Worcestershire	91.3%	8.7%	100.0%
	Warwickshire	90.0%	10.0%	100.0%
	All other West Midlands	89.1%	10.9%	100.0%
	Total	87.7%	12.3%	100.0%

21. Came out and health care worker still assumed heterosexuality

% within PCT

		Came out and health care worker still assumed heterosexuality		Total
		No	Yes	
PCT	Stoke on Trent	85.0%	15.0%	100.0%
	South Staffordshire	81.8%	18.2%	100.0%
	Wolverhampton City	100.0%		100.0%
	Heart of B Teaching / B East & North / South Birmingham	92.6%	7.4%	100.0%
	Coventry Teaching	92.9%	7.1%	100.0%
	Worcestershire	95.7%	4.3%	100.0%
	Warwickshire	92.5%	7.5%	100.0%
	All other West Midlands	91.8%	8.2%	100.0%
	Total	92.1%	7.9%	100.0%

22. Came out and health-care worker asked inappropriate questions

% within PCT

		Came out and health-care worker asked inappropriate questions		Total
		No	Yes	
PCT	Stoke on Trent	85.0%	15.0%	100.0%
	South Staffordshire	90.9%	9.1%	100.0%
	Wolverhampton City	94.7%	5.3%	100.0%
	Heart of B Teaching / B East & North / South Birmingham	93.4%	6.6%	100.0%
	Coventry Teaching	92.9%	7.1%	100.0%
	Worcestershire	100.0%		100.0%
	Warwickshire	97.5%	2.5%	100.0%
	All other West Midlands	97.3%	2.7%	100.0%
Total		95.1%	4.9%	100.0%

23. Any POSITIVE experiences of health care in the last year

% within PCT

		Any POSITIVE experiences of health care in the last year		Total
		None of these	Yes	
PCT	Stoke on Trent	47.6%	52.4%	100.0%
	South Staffordshire	69.6%	30.4%	100.0%
	Wolverhampton City	30.0%	70.0%	100.0%
	Heart of B Teaching / B East & North / South Birmingham	47.9%	52.1%	100.0%
	Coventry Teaching	60.7%	39.3%	100.0%
	Worcestershire	50.0%	50.0%	100.0%
	Warwickshire	50.0%	50.0%	100.0%
	All other West Midlands	46.2%	53.8%	100.0%
Total		49.0%	51.0%	100.0%

24. Health care worker did not make inappropriate comments after disclosure

% within PCT

		Health care worker did not make inappropriate comments after disclosure		Total
		No	Yes	
PCT	Stoke on Trent	66.7%	33.3%	100.0%
	South Staffordshire	82.6%	17.4%	100.0%
	Wolverhampton City	65.0%	35.0%	100.0%
	Heart of B Teaching / B East & North / South Birmingham	68.6%	31.4%	100.0%
	Coventry Teaching	89.3%	10.7%	100.0%
	Worcestershire	73.9%	26.1%	100.0%
	Warwickshire	83.3%	16.7%	100.0%
	All other West Midlands	78.6%	21.4%	100.0%
Total		75.4%	24.6%	100.0%

25. Acknowledgement of sexuality by health worker after disclosure

% within PCT

		Acknowledgement of sexuality by health worker after disclosure		Total
		No	Yes	
PCT	Stoke on Trent	76.2%	23.8%	100.0%
	South Staffordshire	82.6%	17.4%	100.0%
	Wolverhampton City	70.0%	30.0%	100.0%
	Heart of B Teaching / B East & North / South Birmingham	75.2%	24.8%	100.0%
	Coventry Teaching	92.9%	7.1%	100.0%
	Worcestershire	69.6%	30.4%	100.0%
	Warwickshire	76.2%	23.8%	100.0%
	All other West Midlands	73.5%	26.5%	100.0%
Total		75.6%	24.4%	100.0%

26. Health care worker provided an opportunity to come out

% within PCT

		Health care worker provided an opportunity to come out		Total
		No	Yes	
PCT	Stoke on Trent	95.2%	4.8%	100.0%
	South Staffordshire	100.0%		100.0%
	Wolverhampton City	85.0%	15.0%	100.0%
	Heart of B Teaching / B East & North / South Birmingham	92.6%	7.4%	100.0%
	Coventry Teaching	100.0%		100.0%
	Worcestershire	97.8%	2.2%	100.0%
	Warwickshire	95.2%	4.8%	100.0%
	All other West Midlands	94.9%	5.1%	100.0%
	Total	94.7%	5.3%	100.0%

27. Health care worker welcomed partner at consultation

% within PCT

		Health care worker welcomed partner at consultation		Total
		No	Yes	
PCT	Stoke on Trent	71.4%	28.6%	100.0%
	South Staffordshire	91.3%	8.7%	100.0%
	Wolverhampton City	80.0%	20.0%	100.0%
	Heart of B Teaching / B East & North / South Birmingham	82.6%	17.4%	100.0%
	Coventry Teaching	89.3%	10.7%	100.0%
	Worcestershire	89.1%	10.9%	100.0%
	Warwickshire	95.2%	4.8%	100.0%
	All other West Midlands	88.0%	12.0%	100.0%
	Total	86.4%	13.6%	100.0%

28. Health care worker gave advice accounting for my sexuality

% within PCT

		Health care worker gave advice accounting for my sexuality		Total
		No	Yes	
PCT	Stoke on Trent	90.5%	9.5%	100.0%
	South Staffordshire	91.3%	8.7%	100.0%
	Wolverhampton City	70.0%	30.0%	100.0%
	Heart of B Teaching / B East & North / South Birmingham	86.0%	14.0%	100.0%
	Coventry Teaching	92.9%	7.1%	100.0%
	Worcestershire	87.0%	13.0%	100.0%
	Warwickshire	83.3%	16.7%	100.0%
	All other West Midlands	90.6%	9.4%	100.0%
Total		87.3%	12.7%	100.0%

29. GP surgery had clear policy on confidentiality

% within PCT

		GP surgery had clear policy on confidentiality		Total
		No	Yes	
PCT	Stoke on Trent	66.7%	33.3%	100.0%
	South Staffordshire	82.6%	17.4%	100.0%
	Wolverhampton City	55.0%	45.0%	100.0%
	Heart of B Teaching / B East & North / South Birmingham	78.5%	21.5%	100.0%
	Coventry Teaching	75.0%	25.0%	100.0%
	Worcestershire	78.3%	21.7%	100.0%
	Warwickshire	85.7%	14.3%	100.0%
	All other West Midlands	78.6%	21.4%	100.0%
Total		77.5%	22.5%	100.0%

30. GP surgery displayed non-discriminatory policy including sexual orientation

% within PCT

		GP surgery displayed non-discriminatory policy including sexual orientation		Total
		No	Yes	
PCT	Stoke on Trent	85.7%	14.3%	100.0%
	South Staffordshire	95.7%	4.3%	100.0%
	Wolverhampton City	75.0%	25.0%	100.0%
	Heart of B Teaching / B East & North / South Birmingham	91.7%	8.3%	100.0%
	Coventry Teaching	96.4%	3.6%	100.0%
	Worcestershire	95.7%	4.3%	100.0%
	Warwickshire	95.2%	4.8%	100.0%
	All other West Midlands	88.0%	12.0%	100.0%
Total		90.9%	9.1%	100.0%

31. Attended specialist health service for lesbian or bisexual women

% within PCT

		Attended specialist health service for lesbian or bisexual women		Total
		No	Yes	
PCT	Stoke on Trent	100.0%		100.0%
	South Staffordshire	100.0%		100.0%
	Wolverhampton City	100.0%		100.0%
	Heart of B Teaching / B East & North / South Birmingham	99.2%	.8%	100.0%
	Coventry Teaching	96.4%	3.6%	100.0%
	Worcestershire	100.0%		100.0%
	Warwickshire	100.0%		100.0%
	All other West Midlands	100.0%		100.0%
Total		99.5%	.5%	100.0%

The Study:

In 2007, Stonewall and De Montfort University asked lesbian and bisexual women from Great Britain to complete a survey about their health.

The survey received 6178 responses making it the biggest survey of lesbian and bisexual women's health needs in Europe.

Eighty one per cent of respondents said that they were lesbian, and sixteen per cent said they were bisexual. Eighty five per cent of respondents live in England, nine per cent in Scotland, and five per cent in Wales. Eighty two per cent of respondents are white British, and the rest are from ethnic minorities, which is comparable with the general population. Respondents come from a wide age-range. The youngest respondent was fourteen and the oldest was 84. Fourteen per cent of respondents say that they have a disability, including physical and mental disabilities.