

Prescription for Change

Lesbian and bisexual women's health check 2008

South West

This report is a supplementary report to the Stonewall report **Prescription for Change: Lesbian and bisexual women's health check 2008**. This report provides further regional statistics for each country, each Strategic Health Authority, or healthboard.

Methodology

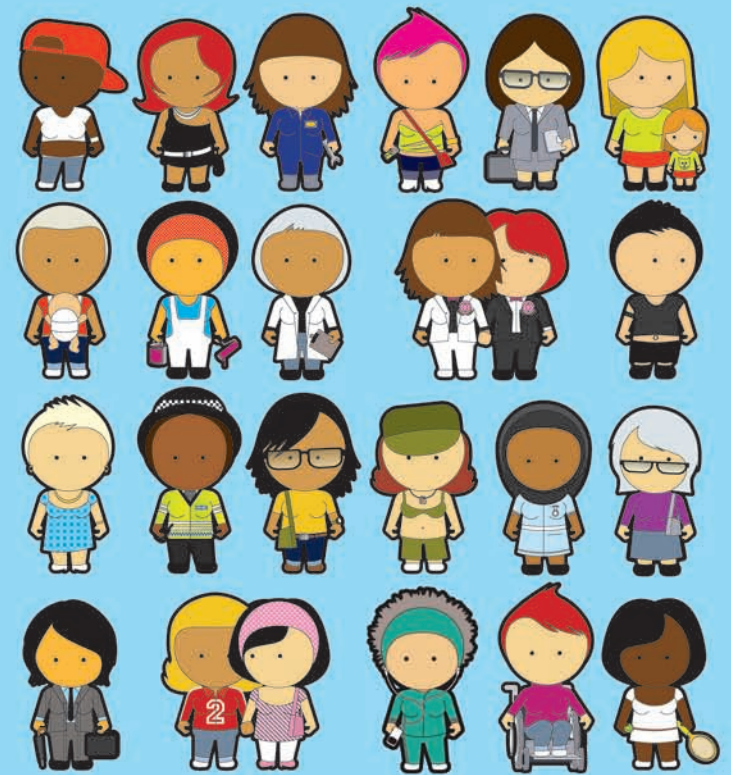
In the summer of 2007, 6178 women responded to an online and paper survey on their health needs and experiences.

The survey included questions on lifestyle (alcohol consumption, smoking, exercise, mental health), medical history and experiences of the health sector. The survey also captured qualitative evidence from participants about their experiences. These are included in the main report.

Guidance on using the data

This data is intended to provide NHS planners with information about their local population, in comparison to national and regional data. For nationwide statistics (Great Britain) for comparison, please refer to the main report. When citing data from this supplementary report please cite Prescription for Change: Lesbian and bisexual women's health check 2008.

Survey results analysed by Sigma Research.



Lesbian & Bisexual Women's Health Survey 2007

South West Strategic Health Authority data report (June 2008, n=376)

Table Contents

- 1a. Sample size by Primary Care Trust (PCT) of residence.
- 1b. Sample size by PCT of residence for following comparisons.
2. Sexual identity (*How do you describe yourself?*); Q4.
3. Current smoker; Q56.
4. Number of days drank ALCOHOL in the last week; Q60+61.
5. Used any of the following DRUGS in the last year (marijuana, ecstasy, LSD, speed, crystal meth, cocaine, crack, ketamine, GHB, heroin); Q63.
6. Ever tested for sexually transmitted infections / vaginal conditions; Q32.
7. Gender of sexual partner in the last 5 years; Q28.
8. Experience of cervical screening; Q29+Q31 (if aged 25-64 and NOT Trans).
9. Frequency of self-checking for lumps or changes in breasts; Q36.
10. In the last year, made an attempt to take your life; Q53.
11. In the last year, deliberate self-harm (not with the intention of killing yourself); Q54.
12. Ever been told you have eating problems; Q40.
13. Ever experienced domestic violence; Q70+72.
14. Self-rating of health; Q8
15. Body Mass Index; calculated from Q17+Q18.
16. Sexuality disclosure to GP and / or health care professionals.
17. Any negative experiences of health care in the last year; Q43.
18. Health care worker assumed heterosexuality.
19. No opportunity to discuss sexual orientation in health-care setting.
20. Not sure of GP surgery's policy on confidentiality.
21. Came out and health care worker still assumed heterosexuality.
22. Came out and health-care worker asked inappropriate questions.
23. Any positive experiences of health care in the last year; Q43.
24. Health care worker did not make inappropriate comments after disclosure.
25. Acknowledgment of sexuality by health worker after disclosure.
26. Health care work provided an opportunity to come out.
27. Health care worker welcomed partner at consultation.
28. Health care worker gave advice accounting for my sexuality.
29. GP surgery had clear policy on confidentiality.
30. GP surgery displayed non-discriminatory policy including sexual orientation.
31. Attended specialist health service for lesbian or bisexual women.

1a. PCT of residence

		Frequency	Percent	Valid Percent	Cumulative Percent
Valid	Bristol	92	24.5	24.5	24.5
	Devon	40	10.6	10.6	35.1
	Gloucestershire	39	10.4	10.4	45.5
	Cornwall and Isles of Scilly	29	7.7	7.7	53.2
	Somerset	28	7.4	7.4	60.6
	Dorset	23	6.1	6.1	66.8
	Bath and North East Somerset	21	5.6	5.6	72.3
	Bournemouth and Poole	21	5.6	5.6	77.9
	Wiltshire	20	5.3	5.3	83.2
	Swindon	18	4.8	4.8	88.0
	Plymouth Teaching	17	4.5	4.5	92.6
	Torbay Care Trust	11	2.9	2.9	95.5
	South Gloucestershire	10	2.7	2.7	98.1
	North Somerset	7	1.9	1.9	100.0
	Total	376	100.0	100.0	

1b. PCT of residence for following comparisons

		Frequency	Percent	Valid Percent	Cumulative Percent
Valid	Bristol	92	24.5	24.5	24.5
	All other South West	63	16.8	16.8	41.2
	Devon	40	10.6	10.6	51.9
	Gloucestershire	39	10.4	10.4	62.2
	Cornwall and Isles of Scilly	29	7.7	7.7	69.9
	Somerset	28	7.4	7.4	77.4
	Dorset	23	6.1	6.1	83.5
	Bath and North East Somerset	21	5.6	5.6	89.1
	Bournemouth and Poole	21	5.6	5.6	94.7
	Wiltshire	20	5.3	5.3	100.0
	Total	376	100.0	100.0	

2. Sexual identity

% within PCT

		Sexual identity			Total
		Lesbian	Bisexual	Other	
PCT	Gloucestershire	87.2%	7.7%	5.1%	100.0%
	Bristol	83.7%	13.0%	3.3%	100.0%
	Bath & NE Somerset	52.4%	38.1%	9.5%	100.0%
	Wiltshire	75.0%	20.0%	5.0%	100.0%
	Cornwall & Isles of Scilly	89.7%	6.9%	3.4%	100.0%
	Devon	76.9%	20.5%	2.6%	100.0%
	Somerset	89.3%	10.7%		100.0%
	Dorset	91.3%	4.3%	4.3%	100.0%
	Bournemouth and Poole	81.0%	19.0%		100.0%
	All other South West	84.1%	14.3%	1.6%	100.0%
Total		82.4%	14.4%	3.2%	100.0%

3. Current smoker (cigarettes)

% within PCT

		Current smoker (cigarettes)		Total
		No	Yes	
PCT	Gloucestershire	69.2%	30.8%	100.0%
	Bristol	71.7%	28.3%	100.0%
	Bath & NE Somerset	76.2%	23.8%	100.0%
	Wiltshire	65.0%	35.0%	100.0%
	Cornwall & Isles of Scilly	60.7%	39.3%	100.0%
	Devon	67.5%	32.5%	100.0%
	Somerset	53.6%	46.4%	100.0%
	Dorset	78.3%	21.7%	100.0%
	Bournemouth and Poole	57.1%	42.9%	100.0%
	All other South West	57.1%	42.9%	100.0%
Total		65.9%	34.1%	100.0%

4. Number of days drank alcohol in the last week

% within PCT

		Number of days drank alcohol in the last week								Total
		No alcohol in last 7 days	1 day	2 days	3 days	4 days	5 days	6 days	7 days	
PCT	Gloucestershire	24.3%	5.4%	32.4%	16.2%	5.4%	10.8%	5.4%		100.0%
	Bristol	26.4%	14.9%	14.9%	13.8%	10.3%	8.0%	5.7%	5.7%	100.0%
	Bath & NE Somerset		22.2%	22.2%	11.1%	22.2%	11.1%	5.6%	5.6%	100.0%
	Wiltshire	27.8%	11.1%		22.2%	11.1%	16.7%	11.1%		100.0%
	Cornwall & Isles of Scilly	30.8%	7.7%	23.1%	11.5%	11.5%	15.4%			100.0%
	Devon	37.1%	11.4%	14.3%	17.1%	5.7%	5.7%	5.7%	2.9%	100.0%
	Somerset	39.3%	35.7%	7.1%	7.1%		3.6%	3.6%	3.6%	100.0%
	Dorset	38.1%	9.5%	19.0%	14.3%		4.8%		14.3%	100.0%
	Bournemouth and Poole	18.8%	31.3%	25.0%	18.8%	6.3%				100.0%
	All other South West	31.1%	11.5%	21.3%	1.6%	16.4%	6.6%	4.9%	6.6%	100.0%
Total		28.5%	14.7%	18.2%	12.1%	9.5%	8.1%	4.6%	4.3%	100.0%

5. Used any of the following drugs in the last year: marijuana, ecstasy, LSD, speed, crystal meth, cocaine, crack, ketamine, GHB, heroin

% within PCT

		Used any drugs in the last year		Total
		Not last year	Yes, last year	
PCT	Gloucestershire	69.2%	30.8%	100.0%
	Bristol	62.0%	38.0%	100.0%
	Bath & NE Somerset	50.0%	50.0%	100.0%
	Wiltshire	78.9%	21.1%	100.0%
	Cornwall & Isles of Scilly	77.8%	22.2%	100.0%
	Devon	66.7%	33.3%	100.0%
	Somerset	64.3%	35.7%	100.0%
	Dorset	78.3%	21.7%	100.0%
	Bournemouth and Poole	57.1%	42.9%	100.0%
	All other South West	61.9%	38.1%	100.0%
Total		65.5%	34.5%	100.0%

6. Ever tested for STI / vaginal conditions

% within PCT

		Ever tested for STI / vaginal conditions		Total
		No	Yes	
PCT	Gloucestershire	59.0%	41.0%	100.0%
	Bristol	57.6%	42.4%	100.0%
	Bath & NE Somerset	23.8%	76.2%	100.0%
	Wiltshire	60.0%	40.0%	100.0%
	Cornwall & Isles of Scilly	65.5%	34.5%	100.0%
	Devon	52.5%	47.5%	100.0%
	Somerset	53.6%	46.4%	100.0%
	Dorset	52.2%	47.8%	100.0%
	Bournemouth and Poole	61.9%	38.1%	100.0%
	All other South West	59.7%	40.3%	100.0%
Total		56.0%	44.0%	100.0%

7. Gender of sexual partners in last 5 years

% within PCT

		Gender of sexual partners in last 5 years				Total
		Women only	Men only	Both women and men	No one	
PCT	Gloucestershire	66.7%	2.6%	30.8%		100.0%
	Bristol	67.4%	1.1%	28.3%	3.3%	100.0%
	Bath & NE Somerset	57.1%	4.8%	38.1%		100.0%
	Wiltshire	50.0%	10.0%	30.0%	10.0%	100.0%
	Cornwall & Isles of Scilly	58.6%		31.0%	10.3%	100.0%
	Devon	60.0%		37.5%	2.5%	100.0%
	Somerset	67.9%	3.6%	21.4%	7.1%	100.0%
	Dorset	87.0%		13.0%		100.0%
	Bournemouth and Poole	47.6%		47.6%	4.8%	100.0%
	All other South West	60.3%		36.5%	3.2%	100.0%
Total		63.3%	1.6%	31.4%	3.7%	100.0%

8. Experience of cervical screening (age 25-64, NOT Trans)

% within PCT

		Experience of cervical screening				Total
		Never had cervical smear	I have had a smear test in the last 3 years	I have had a smear test in the past 3-5 years	I had a smear test more than 5 years ago	
PCT	Gloucestershire	15.4%	61.5%	11.5%	11.5%	100.0%
	Bristol	16.9%	49.2%	24.6%	9.2%	100.0%
	Bath & NE Somerset	7.7%	53.8%	23.1%	15.4%	100.0%
	Wiltshire	10.0%	50.0%	20.0%	20.0%	100.0%
	Cornwall & Isles of Scilly	28.6%	52.4%	9.5%	9.5%	100.0%
	Devon	14.3%	60.7%	10.7%	14.3%	100.0%
	Somerset	15.0%	50.0%	15.0%	20.0%	100.0%
	Dorset	6.7%	40.0%	40.0%	13.3%	100.0%
	Bournemouth and Poole	9.1%	54.5%	18.2%	18.2%	100.0%
	All other South West	17.1%	57.1%	11.4%	14.3%	100.0%
	Total	15.6%	53.3%	18.0%	13.1%	100.0%

9. Frequency of self-checking breasts

% within PCT

		Frequency of self-checking breasts			Total
		No, I don't currently self-check	Yes, sometimes (every few months)	Yes, regularly (every month)	
PCT	Gloucestershire	15.4%	53.8%	30.8%	100.0%
	Bristol	28.3%	42.4%	29.3%	100.0%
	Bath & NE Somerset	19.0%	61.9%	19.0%	100.0%
	Wiltshire	30.0%	35.0%	35.0%	100.0%
	Cornwall & Isles of Scilly	17.2%	51.7%	31.0%	100.0%
	Devon	17.5%	50.0%	32.5%	100.0%
	Somerset	10.7%	50.0%	39.3%	100.0%
	Dorset	4.3%	65.2%	30.4%	100.0%
	Bournemouth and Poole	9.5%	66.7%	23.8%	100.0%
	All other South West	17.5%	57.1%	25.4%	100.0%
	Total	18.9%	51.6%	29.5%	100.0%

10. In the last year, made any attempt to take your life

% within PCT

		In the last year, made any attempt to take your life		Total
		No	Yes	
PCT	Gloucestershire	97.4%	2.6%	100.0%
	Bristol	95.7%	4.3%	100.0%
	Bath & NE Somerset	90.5%	9.5%	100.0%
	Wiltshire	85.0%	15.0%	100.0%
	Cornwall & Isles of Scilly	100.0%		100.0%
	Devon	95.0%	5.0%	100.0%
	Somerset	100.0%		100.0%
	Dorset	81.8%	18.2%	100.0%
	Bournemouth and Poole	95.0%	5.0%	100.0%
	All other South West	93.7%	6.3%	100.0%
Total		94.4%	5.6%	100.0%

11. In the last year, deliberate self-harm (with no the intention of killing yourself)

% within PCT

		In the last year, deliberate self-harm (with no the intention of killing yourself)		Total
		No	Yes	
PCT	Gloucestershire	84.6%	15.4%	100.0%
	Bristol	80.4%	19.6%	100.0%
	Bath & NE Somerset	61.9%	38.1%	100.0%
	Wiltshire	60.0%	40.0%	100.0%
	Cornwall & Isles of Scilly	86.2%	13.8%	100.0%
	Devon	82.5%	17.5%	100.0%
	Somerset	64.3%	35.7%	100.0%
	Dorset	82.6%	17.4%	100.0%
	Bournemouth and Poole	85.0%	15.0%	100.0%
	All other South West	71.4%	28.6%	100.0%
Total		77.1%	22.9%	100.0%

12. Ever been told you have eating problem

% within PCT

		Ever been told you have eating problem		Total
		No	Yes	
PCT	Gloucestershire	69.2%	30.8%	100.0%
	Bristol	79.3%	20.7%	100.0%
	Bath & NE Somerset	85.7%	14.3%	100.0%
	Wiltshire	85.0%	15.0%	100.0%
	Cornwall & Isles of Scilly	93.1%	6.9%	100.0%
	Devon	77.5%	22.5%	100.0%
	Somerset	82.1%	17.9%	100.0%
	Dorset	82.6%	17.4%	100.0%
	Bournemouth and Poole	81.0%	19.0%	100.0%
	All other South West	76.2%	23.8%	100.0%
Total		79.8%	20.2%	100.0%

13. Ever experienced domestic violence

% within PCT

		Ever experienced domestic violence			Total
		No never	Yes, from a male	Yes, from a female	
PCT	Gloucestershire	74.4%	10.3%	15.4%	100.0%
	Bristol	71.4%	11.0%	17.6%	100.0%
	Bath & NE Somerset	95.2%	4.8%		100.0%
	Wiltshire	75.0%	5.0%	20.0%	100.0%
	Cornwall & Isles of Scilly	62.1%	10.3%	27.6%	100.0%
	Devon	77.5%	10.0%	12.5%	100.0%
	Somerset	50.0%	17.9%	32.1%	100.0%
	Dorset	73.9%	21.7%	4.3%	100.0%
	Bournemouth and Poole	71.4%		28.6%	100.0%
	All other South West	66.7%	9.5%	23.8%	100.0%
Total		70.9%	10.4%	18.7%	100.0%

14. Self-rating of health

% within PCT

		Self-rating of health				Total
		Excellent	Good	Fair	Poor	
PCT	Gloucestershire	20.5%	56.4%	23.1%		100.0%
	Bristol	18.5%	64.1%	15.2%	2.2%	100.0%
	Bath & NE Somerset	9.5%	61.9%	28.6%		100.0%
	Wiltshire	10.0%	90.0%			100.0%
	Cornwall & Isles of Scilly	31.0%	48.3%	20.7%		100.0%
	Devon	22.5%	65.0%	10.0%	2.5%	100.0%
	Somerset	10.7%	75.0%	14.3%		100.0%
	Dorset	21.7%	56.5%	8.7%	13.0%	100.0%
	Bournemouth and Poole	28.6%	52.4%	19.0%		100.0%
	All other South West	23.8%	58.7%	17.5%		100.0%
Total		20.2%	62.2%	16.0%	1.6%	100.0%

15. BMI categories

% within PCT

		BMI categories					Total
		Underweight (<18.5)	Normal (18.5 - 24.99)	Overweight (25 - 29.99)	Obese (30+)	Very Obese (40+)	
PCT	Gloucestershire		51.3%	33.3%	12.8%	2.6%	100.0%
	Bristol	5.5%	49.5%	27.5%	14.3%	3.3%	100.0%
	Bath & NE Somerset	4.8%	47.6%	33.3%	14.3%		100.0%
	Wiltshire	5.3%	42.1%	42.1%	5.3%	5.3%	100.0%
	Cornwall & Isles of Scilly		55.6%	29.6%	14.8%		100.0%
	Devon		68.4%	15.8%	15.8%		100.0%
	Somerset		52.0%	36.0%	12.0%		100.0%
	Dorset		40.9%	22.7%	36.4%		100.0%
	Bournemouth and Poole	4.8%	42.9%	23.8%	19.0%	9.5%	100.0%
	All other South West	8.2%	41.0%	29.5%	19.7%	1.6%	100.0%
Total		3.6%	49.5%	28.6%	16.2%	2.2%	100.0%

16. Sexuality disclosure to GP or health care professionals

% within PCT

		Sexuality disclosure to GP or health care professionals					Total
		All or almost all	More than half	About half	Less than half	Few or none	
PCT	Gloucestershire	44.7%	2.6%	2.6%	13.2%	36.8%	100.0%
	Bristol	33.0%	2.3%	5.7%	10.2%	48.9%	100.0%
	Bath & NE Somerset	42.9%		9.5%	4.8%	42.9%	100.0%
	Wiltshire	45.0%	5.0%		20.0%	30.0%	100.0%
	Cornwall & Isles of Scilly	40.7%	11.1%	11.1%	14.8%	22.2%	100.0%
	Devon	35.9%	2.6%	2.6%	10.3%	48.7%	100.0%
	Somerset	44.4%	7.4%	3.7%	3.7%	40.7%	100.0%
	Dorset	30.0%		15.0%	15.0%	40.0%	100.0%
	Bournemouth and Poole	47.6%			4.8%	47.6%	100.0%
	All other South West	30.2%	6.3%	9.5%	4.8%	49.2%	100.0%
Total		37.4%	3.8%	6.0%	9.6%	43.1%	100.0%

17. Any NEGATIVE experiences of health care in the last year

% within PCT

		Any NEGATIVE experiences of health care in the last year		Total
		No none	Yes	
PCT	Gloucestershire	48.6%	51.4%	100.0%
	Bristol	43.8%	56.2%	100.0%
	Bath & NE Somerset	30.0%	70.0%	100.0%
	Wiltshire	63.2%	36.8%	100.0%
	Cornwall & Isles of Scilly	48.1%	51.9%	100.0%
	Devon	53.8%	46.2%	100.0%
	Somerset	61.5%	38.5%	100.0%
	Dorset	50.0%	50.0%	100.0%
	Bournemouth and Poole	41.2%	58.8%	100.0%
	All other South West	55.7%	44.3%	100.0%
Total		49.6%	50.4%	100.0%

18. Health care worker assumed heterosexuality

% within PCT

		Health care worker assumed heterosexuality		Total
		No	Yes	
PCT	Gloucestershire	70.3%	29.7%	100.0%
	Bristol	52.2%	47.8%	100.0%
	Bath & NE Somerset	50.0%	50.0%	100.0%
	Wiltshire	84.2%	15.8%	100.0%
	Cornwall & Isles of Scilly	55.6%	44.4%	100.0%
	Devon	64.1%	35.9%	100.0%
	Somerset	69.2%	30.8%	100.0%
	Dorset	54.5%	45.5%	100.0%
	Bournemouth and Poole	64.7%	35.3%	100.0%
	All other South West	59.0%	41.0%	100.0%
Total		60.3%	39.7%	100.0%

19. No opportunity to discuss sexual orientation in health-care setting

% within PCT

		No opportunity to discuss sexual orientation in health-care setting		Total
		No	Yes	
PCT	Gloucestershire	78.4%	21.6%	100.0%
	Bristol	73.3%	26.7%	100.0%
	Bath & NE Somerset	75.0%	25.0%	100.0%
	Wiltshire	73.7%	26.3%	100.0%
	Cornwall & Isles of Scilly	88.9%	11.1%	100.0%
	Devon	82.1%	17.9%	100.0%
	Somerset	92.3%	7.7%	100.0%
	Dorset	86.4%	13.6%	100.0%
	Bournemouth and Poole	82.4%	17.6%	100.0%
	All other South West	78.7%	21.3%	100.0%
Total		79.6%	20.4%	100.0%

20. Not sure of GP surgery's policy on confidentiality

% within PCT

		Not sure of GP surgery's policy on confidentiality		Total
		No	Yes	
PCT	Gloucestershire	89.2%	10.8%	100.0%
	Bristol	84.4%	15.6%	100.0%
	Bath & NE Somerset	80.0%	20.0%	100.0%
	Wiltshire	100.0%		100.0%
	Cornwall & Isles of Scilly	92.6%	7.4%	100.0%
	Devon	89.7%	10.3%	100.0%
	Somerset	92.3%	7.7%	100.0%
	Dorset	86.4%	13.6%	100.0%
	Bournemouth and Poole	88.2%	11.8%	100.0%
	All other South West	85.2%	14.8%	100.0%
Total		87.7%	12.3%	100.0%

21. Came out and health care worker still assumed heterosexuality

% within PCT

		Came out and health care worker still assumed heterosexuality		Total
		No	Yes	
PCT	Gloucestershire	97.3%	2.7%	100.0%
	Bristol	90.0%	10.0%	100.0%
	Bath & NE Somerset	80.0%	20.0%	100.0%
	Wiltshire	100.0%		100.0%
	Cornwall & Isles of Scilly	96.3%	3.7%	100.0%
	Devon	92.3%	7.7%	100.0%
	Somerset	96.2%	3.8%	100.0%
	Dorset	90.9%	9.1%	100.0%
	Bournemouth and Poole	88.2%	11.8%	100.0%
	All other South West	88.5%	11.5%	100.0%
Total		91.6%	8.4%	100.0%

22. Came out and health-care worker asked inappropriate questions

% within PCT

		Came out and health-care worker asked inappropriate questions		Total
		No	Yes	
PCT	Gloucestershire	97.3%	2.7%	100.0%
	Bristol	92.2%	7.8%	100.0%
	Bath & NE Somerset	95.0%	5.0%	100.0%
	Wiltshire	100.0%		100.0%
	Cornwall & Isles of Scilly	100.0%		100.0%
	Devon	94.9%	5.1%	100.0%
	Somerset	88.5%	11.5%	100.0%
	Dorset	100.0%		100.0%
	Bournemouth and Poole	100.0%		100.0%
	All other South West	95.1%	4.9%	100.0%
Total		95.3%	4.7%	100.0%

23. Any POSITIVE experiences of health care in the last year

% within PCT

		Any POSITIVE experiences of health care in the last year		Total
		None of these	Yes	
PCT	Gloucestershire	35.9%	64.1%	100.0%
	Bristol	44.6%	55.4%	100.0%
	Bath & NE Somerset	38.1%	61.9%	100.0%
	Wiltshire	40.0%	60.0%	100.0%
	Cornwall & Isles of Scilly	35.7%	64.3%	100.0%
	Devon	45.0%	55.0%	100.0%
	Somerset	21.4%	78.6%	100.0%
	Dorset	39.1%	60.9%	100.0%
	Bournemouth and Poole	60.0%	40.0%	100.0%
	All other South West	50.8%	49.2%	100.0%
Total		42.2%	57.8%	100.0%

24. Health care worker did not make inappropriate comments after disclosure

% within PCT

		Health care worker did not make inappropriate comments after disclosure		Total
		No	Yes	
PCT	Gloucestershire	79.5%	20.5%	100.0%
	Bristol	69.6%	30.4%	100.0%
	Bath & NE Somerset	61.9%	38.1%	100.0%
	Wiltshire	60.0%	40.0%	100.0%
	Cornwall & Isles of Scilly	71.4%	28.6%	100.0%
	Devon	70.0%	30.0%	100.0%
	Somerset	71.4%	28.6%	100.0%
	Dorset	69.6%	30.4%	100.0%
	Bournemouth and Poole	75.0%	25.0%	100.0%
	All other South West	76.2%	23.8%	100.0%
Total		71.4%	28.6%	100.0%

25. Acknowledgement of sexuality by health worker after disclosure

% within PCT

		Acknowledgement of sexuality by health worker after disclosure		Total
		No	Yes	
PCT	Gloucestershire	69.2%	30.8%	100.0%
	Bristol	73.9%	26.1%	100.0%
	Bath & NE Somerset	66.7%	33.3%	100.0%
	Wiltshire	75.0%	25.0%	100.0%
	Cornwall & Isles of Scilly	64.3%	35.7%	100.0%
	Devon	55.0%	45.0%	100.0%
	Somerset	53.6%	46.4%	100.0%
	Dorset	73.9%	26.1%	100.0%
	Bournemouth and Poole	80.0%	20.0%	100.0%
	All other South West	73.0%	27.0%	100.0%
Total		69.0%	31.0%	100.0%

26. Health care worker provided an opportunity to come out

% within PCT

		Health care worker provided an opportunity to come out		Total
		No	Yes	
PCT	Gloucestershire	94.9%	5.1%	100.0%
	Bristol	94.6%	5.4%	100.0%
	Bath & NE Somerset	90.5%	9.5%	100.0%
	Wiltshire	100.0%		100.0%
	Cornwall & Isles of Scilly	92.9%	7.1%	100.0%
	Devon	92.5%	7.5%	100.0%
	Somerset	85.7%	14.3%	100.0%
	Dorset	91.3%	8.7%	100.0%
	Bournemouth and Poole	95.0%	5.0%	100.0%
	All other South West	92.1%	7.9%	100.0%
Total		93.0%	7.0%	100.0%

27. Health care worker welcomed partner at consultation

% within PCT

		Health care worker welcomed partner at consultation		Total
		No	Yes	
PCT	Gloucestershire	76.9%	23.1%	100.0%
	Bristol	89.1%	10.9%	100.0%
	Bath & NE Somerset	90.5%	9.5%	100.0%
	Wiltshire	90.0%	10.0%	100.0%
	Cornwall & Isles of Scilly	78.6%	21.4%	100.0%
	Devon	80.0%	20.0%	100.0%
	Somerset	75.0%	25.0%	100.0%
	Dorset	82.6%	17.4%	100.0%
	Bournemouth and Poole	70.0%	30.0%	100.0%
	All other South West	92.1%	7.9%	100.0%
Total		84.2%	15.8%	100.0%

28. Health care worker gave advice accounting for my sexuality

% within PCT

		Health care worker gave advice accounting for my sexuality		Total
		No	Yes	
PCT	Gloucestershire	94.9%	5.1%	100.0%
	Bristol	88.0%	12.0%	100.0%
	Bath & NE Somerset	85.7%	14.3%	100.0%
	Wiltshire	95.0%	5.0%	100.0%
	Cornwall & Isles of Scilly	89.3%	10.7%	100.0%
	Devon	80.0%	20.0%	100.0%
	Somerset	71.4%	28.6%	100.0%
	Dorset	82.6%	17.4%	100.0%
	Bournemouth and Poole	85.0%	15.0%	100.0%
	All other South West	95.2%	4.8%	100.0%
Total		87.7%	12.3%	100.0%

29. GP surgery had clear policy on confidentiality

% within PCT

		GP surgery had clear policy on confidentiality		Total
		No	Yes	
PCT	Gloucestershire	71.8%	28.2%	100.0%
	Bristol	81.5%	18.5%	100.0%
	Bath & NE Somerset	81.0%	19.0%	100.0%
	Wiltshire	70.0%	30.0%	100.0%
	Cornwall & Isles of Scilly	78.6%	21.4%	100.0%
	Devon	72.5%	27.5%	100.0%
	Somerset	42.9%	57.1%	100.0%
	Dorset	78.3%	21.7%	100.0%
	Bournemouth and Poole	80.0%	20.0%	100.0%
	All other South West	73.0%	27.0%	100.0%
Total		74.1%	25.9%	100.0%

30. GP surgery displayed non-discriminatory policy including sexual orientation

% within PCT

		GP surgery displayed non-discriminatory policy including sexual orientation		Total
		No	Yes	
PCT	Gloucestershire	94.9%	5.1%	100.0%
	Bristol	93.5%	6.5%	100.0%
	Bath & NE Somerset	95.2%	4.8%	100.0%
	Wiltshire	95.0%	5.0%	100.0%
	Cornwall & Isles of Scilly	92.9%	7.1%	100.0%
	Devon	85.0%	15.0%	100.0%
	Somerset	71.4%	28.6%	100.0%
	Dorset	87.0%	13.0%	100.0%
	Bournemouth and Poole	100.0%		100.0%
	All other South West	90.5%	9.5%	100.0%
Total		90.6%	9.4%	100.0%

31. Attended specialist health service for lesbian or bisexual women

% within PCT

		Attended specialist health service for lesbian or bisexual women		Total
		No	Yes	
PCT	Gloucestershire	100.0%		100.0%
	Bristol	96.7%	3.3%	100.0%
	Bath & NE Somerset	100.0%		100.0%
	Wiltshire	95.0%	5.0%	100.0%
	Cornwall & Isles of Scilly	100.0%		100.0%
	Devon	100.0%		100.0%
	Somerset	96.4%	3.6%	100.0%
	Dorset	100.0%		100.0%
	Bournemouth and Poole	100.0%		100.0%
	All other South West	100.0%		100.0%
Total		98.7%	1.3%	100.0%

The Study:

In 2007, Stonewall and De Montfort University asked lesbian and bisexual women from Great Britain to complete a survey about their health. The survey received 6178 responses making it the biggest survey of lesbian and bisexual women's health needs in Europe.

Eighty one per cent of respondents said that they were lesbian, and sixteen per cent said they were bisexual. Eighty five per cent of respondents live in England, nine per cent in Scotland, and five per cent in Wales. Eighty two per cent of respondents are white British, and the rest are from ethnic minorities, which is comparable with the general population. Respondents come from a wide age-range. The youngest respondent was fourteen and the oldest was 84. Fourteen per cent of respondents say that they have a disability, including physical and mental disabilities.