

# Prescription for Change

## Lesbian and bisexual women's health check 2008

### North West

This report is a supplementary report to the Stonewall report **Prescription for Change: Lesbian and bisexual women's health check 2008**. This report provides further regional statistics for each country, each Strategic Health Authority, or healthboard.

#### Methodology

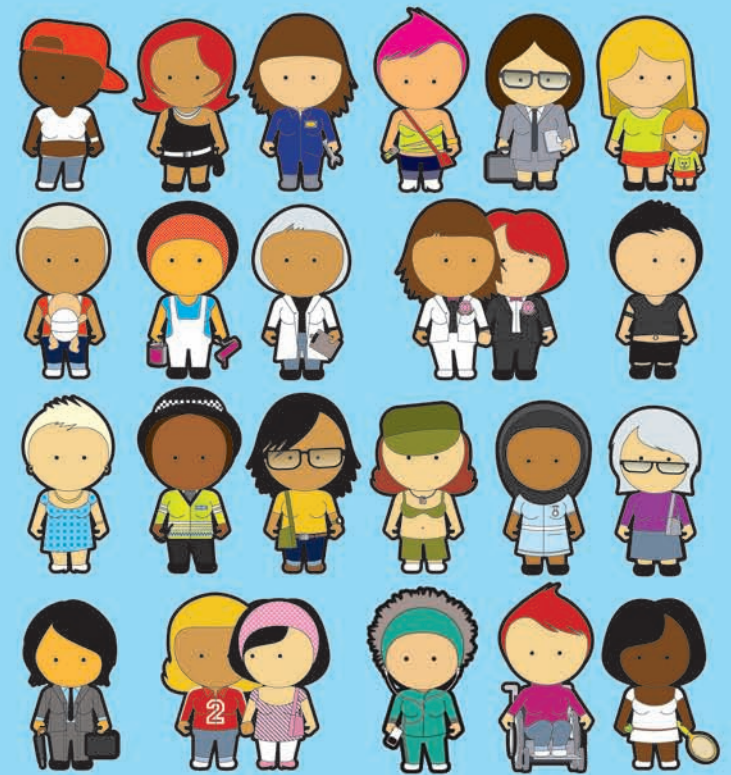
In the summer of 2007, 6178 women responded to an online and paper survey on their health needs and experiences.

The survey included questions on lifestyle (alcohol consumption, smoking, exercise, mental health), medical history and experiences of the health sector. The survey also captured qualitative evidence from participants about their experiences. These are included in the main report.

#### Guidance on using the data

This data is intended to provide NHS planners with information about their local population, in comparison to national and regional data. For nationwide statistics (Great Britain) for comparison, please refer to the main report. When citing data from this supplementary report please cite Prescription for Change: Lesbian and bisexual women's health check 2008.

Survey results analysed by Sigma Research.



# Lesbian & Bisexual Women's Health Survey 2007

## North West Strategic Health Authority data report (June 2008, n=638)

### Table Contents

- 1a. Sample size by Primary Care Trust (PCT) of residence.
- 1b. Sample size by PCT of residence for following comparisons.
2. Sexual identity (*How do you describe yourself?*); Q4.
3. Current smoker; Q56.
4. Number of days drank ALCOHOL in the last week; Q60+61.
5. Used any of the following DRUGS in the last year (marijuana, ecstasy, LSD, speed, crystal meth, cocaine, crack, ketamine, GHB, heroin); Q63.
6. Ever tested for sexually transmitted infections / vaginal conditions; Q32.
7. Gender of sexual partner in the last 5 years; Q28.
8. Experience of cervical screening; Q29+Q31 (if aged 25-64 and NOT Trans).
9. Frequency of self-checking for lumps or changes in breasts; Q36.
10. In the last year, made an attempt to take your life; Q53.
11. In the last year, deliberate self-harm (not with the intention of killing yourself); Q54.
12. Ever been told you have eating problems; Q40.
13. Ever experienced domestic violence; Q70+72.
14. Self-rating of health; Q8
15. Body Mass Index; calculated from Q17+Q18.
16. Sexuality disclosure to GP and / or health care professionals.
17. Any negative experiences of health care in the last year; Q43.
18. Health care worker assumed heterosexuality.
19. No opportunity to discuss sexual orientation in health-care setting.
20. Not sure of GP surgery's policy on confidentiality.
21. Came out and health care worker still assumed heterosexuality.
22. Came out and health-care worker asked inappropriate questions.
23. Any positive experiences of health care in the last year; Q43.
24. Health care worker did not make inappropriate comments after disclosure.
25. Acknowledgment of sexuality by health worker after disclosure.
26. Health care work provided an opportunity to come out.
27. Health care worker welcomed partner at consultation.
28. Health care worker gave advice accounting for my sexuality.
29. GP surgery had clear policy on confidentiality.
30. GP surgery displayed non-discriminatory policy including sexual orientation.
31. Attended specialist health service for lesbian or bisexual women.

1a. PCT of residence

	Frequency	Percent	Valid Percent	Cumulative Percent
Valid Manchester	149	23.4	23.4	23.4
Liverpool	48	7.5	7.5	30.9
Salford	38	6.0	6.0	36.8
North Lancashire Teaching	37	5.8	5.8	42.6
Central Lancashire	33	5.2	5.2	47.8
Wirral	28	4.4	4.4	52.2
Sefton	27	4.2	4.2	56.4
Trafford	27	4.2	4.2	60.7
Stockport	23	3.6	3.6	64.3
Blackpool	21	3.3	3.3	67.6
Cumbria	20	3.1	3.1	70.7
Central & Eastern Cheshire	20	3.1	3.1	73.8
East Lancashire	16	2.5	2.5	76.3
Western Cheshire	16	2.5	2.5	78.8
Bolton	15	2.4	2.4	81.2
Halton and St Helens	14	2.2	2.2	83.4
N. / E. / Central Lancashire PCT unknown (Lancashire)	13	2.0	2.0	85.4
Heywood, Middleton and Rochdale	13	2.0	2.0	87.5
Warrington	13	2.0	2.0	89.5
Ashton, Leigh and Wigan	12	1.9	1.9	91.4
Bury	12	1.9	1.9	93.3
Tameside and Glossop	12	1.9	1.9	95.1
Western Cheshire / Central and Eastern Cheshire PCT Unknown (Cheshire)	11	1.7	1.7	96.9
Blackburn with Darwen	7	1.1	1.1	98.0
Oldham	7	1.1	1.1	99.1
PCT area unknown	5	.8	.8	99.8
Knowsley	1	.2	.2	100.0
Total	638	100.0	100.0	

## 1b. PCT of residence for comparison

	Frequency	Percent	Valid Percent	Cumulative Percent
Valid All other North West	167	26.2	26.2	26.2
Manchester	149	23.4	23.4	49.5
Liverpool	48	7.5	7.5	57.1
Salford	38	6.0	6.0	63.0
North Lancashire Teaching	37	5.8	5.8	68.8
Central Lancashire	33	5.2	5.2	74.0
Wirral	28	4.4	4.4	78.4
Sefton	27	4.2	4.2	82.6
Trafford	27	4.2	4.2	86.8
Stockport	23	3.6	3.6	90.4
Blackpool	21	3.3	3.3	93.7
Cumbria	20	3.1	3.1	96.9
Central & Eastern Cheshire	20	3.1	3.1	100.0
Total	638	100.0	100.0	

## 2. Sexual identity

% within PCT

	Sexual identity			Total
	Lesbian	Bisexual	Other	
PCT Cumbria	85.0%	15.0%		100.0%
North Lancashire T.	91.9%	5.4%	2.7%	100.0%
Blackpool	76.2%	19.0%	4.8%	100.0%
Sefton	81.5%	11.1%	7.4%	100.0%
Central Lancashire	93.9%	3.0%	3.0%	100.0%
Wirral	71.4%	28.6%		100.0%
Liverpool	83.3%	14.6%	2.1%	100.0%
Salford	84.2%	15.8%		100.0%
Trafford	92.6%	7.4%		100.0%
Manchester	73.0%	20.9%	6.1%	100.0%
Stockport	91.3%	4.3%	4.3%	100.0%
C & E Cheshire	85.0%	10.0%	5.0%	100.0%
All other North West	80.8%	16.8%	2.4%	100.0%
Total	81.3%	15.4%	3.3%	100.0%

### 3. Current smoker (cigarettes)

% within PCT

		Current smoker (cigarettes)		Total
		No	Yes	
PCT	Cumbria	80.0%	20.0%	100.0%
	North Lancashire T.	75.0%	25.0%	100.0%
	Blackpool	52.4%	47.6%	100.0%
	Sefton	40.7%	59.3%	100.0%
	Central Lancashire	60.6%	39.4%	100.0%
	Wirral	60.7%	39.3%	100.0%
	Liverpool	76.6%	23.4%	100.0%
	Salford	84.2%	15.8%	100.0%
	Trafford	77.8%	22.2%	100.0%
	Manchester	70.3%	29.7%	100.0%
	Stockport	52.2%	47.8%	100.0%
	C & E Cheshire	66.7%	33.3%	100.0%
	All other North West	66.5%	33.5%	100.0%
Total		67.9%	32.1%	100.0%

### 4. Number of days drank alcohol in the last week

% within PCT

		Number of days drank alcohol in the last week								Total
		No alcohol in last 7 days	1 day	2 days	3 days	4 days	5 days	6 days	7 days	
PCT	Cumbria	31.6%	15.8%	15.8%	10.5%	10.5%	5.3%	5.3%	5.3%	100.0%
	North Lancashire T.	30.6%	16.7%	13.9%	13.9%	8.3%	2.8%	2.8%	11.1%	100.0%
	Blackpool	28.6%	4.8%	9.5%	23.8%	9.5%	9.5%		14.3%	100.0%
	Sefton	16.0%	32.0%	24.0%	16.0%	8.0%			4.0%	100.0%
	Central Lancashire	15.6%	28.1%	15.6%	18.8%	9.4%	6.3%		6.3%	100.0%
	Wirral	18.2%	18.2%	27.3%	4.5%	9.1%	9.1%	4.5%	9.1%	100.0%
	Liverpool	22.7%	20.5%	11.4%	11.4%	11.4%	11.4%	6.8%	4.5%	100.0%
	Salford	25.0%	22.2%	19.4%	19.4%		8.3%		5.6%	100.0%
	Trafford	16.0%	8.0%	32.0%	32.0%	4.0%	4.0%		4.0%	100.0%
	Manchester	15.6%	14.8%	23.0%	14.8%	17.0%	7.4%	2.2%	5.2%	100.0%
	Stockport	23.8%	14.3%	9.5%	9.5%	19.0%	9.5%	14.3%		100.0%
	C & E Cheshire	44.4%	22.2%	22.2%		11.1%				100.0%
	All other North West	19.6%	16.5%	23.4%	15.8%	12.7%	5.1%	.6%	6.3%	100.0%
Total		20.9%	17.4%	20.4%	15.2%	11.7%	6.3%	2.2%	5.9%	100.0%

**5. Used any of the following drugs in the last year: marijuana, ecstasy, LSD, speed, crystal meth, cocaine, crack, ketamine, GHB, heroin**

% within PCT

		Used any drugs in the last year		Total
		Not last year	Yes, last year	
PCT	Cumbria	90.0%	10.0%	100.0%
	North Lancashire T.	67.6%	32.4%	100.0%
	Blackpool	61.9%	38.1%	100.0%
	Sefton	48.1%	51.9%	100.0%
	Central Lancashire	60.6%	39.4%	100.0%
	Wirral	64.3%	35.7%	100.0%
	Liverpool	50.0%	50.0%	100.0%
	Salford	70.3%	29.7%	100.0%
	Trafford	66.7%	33.3%	100.0%
	Manchester	51.4%	48.6%	100.0%
	Stockport	77.3%	22.7%	100.0%
	C & E Cheshire	52.6%	47.4%	100.0%
	All other North West	63.6%	36.4%	100.0%
Total		60.6%	39.4%	100.0%

**6. Ever tested for STI / vaginal conditions**

% within PCT

		Ever tested for STI / vaginal conditions		Total
		No	Yes	
PCT	Cumbria	60.0%	40.0%	100.0%
	North Lancashire T.	37.8%	62.2%	100.0%
	Blackpool	30.0%	70.0%	100.0%
	Sefton	55.6%	44.4%	100.0%
	Central Lancashire	63.6%	36.4%	100.0%
	Wirral	60.7%	39.3%	100.0%
	Liverpool	58.3%	41.7%	100.0%
	Salford	52.6%	47.4%	100.0%
	Trafford	59.3%	40.7%	100.0%
	Manchester	43.2%	56.8%	100.0%
	Stockport	69.6%	30.4%	100.0%
	C & E Cheshire	68.4%	31.6%	100.0%
	All other North West	63.9%	36.1%	100.0%
Total		54.9%	45.1%	100.0%

## 7. Gender of sexual partners in last 5 years

% within PCT

		Gender of sexual partners in last 5 years				Total
		Women only	Men only	Both women and men	No one	
PCT	Cumbria	70.0%		30.0%		100.0%
	North Lancashire T.	62.2%	2.7%	32.4%	2.7%	100.0%
	Blackpool	52.4%		47.6%		100.0%
	Sefton	38.5%		61.5%		100.0%
	Central Lancashire	69.7%		30.3%		100.0%
	Wirral	60.7%	3.6%	35.7%		100.0%
	Liverpool	58.3%	2.1%	33.3%	6.3%	100.0%
	Salford	68.4%		23.7%	7.9%	100.0%
	Trafford	77.8%		18.5%	3.7%	100.0%
	Manchester	58.4%	2.0%	36.2%	3.4%	100.0%
	Stockport	69.6%		21.7%	8.7%	100.0%
	C & E Cheshire	55.6%	11.1%	33.3%		100.0%
	All other North West	59.9%	2.4%	34.7%	3.0%	100.0%
Total		60.8%	1.9%	34.2%	3.1%	100.0%

## 8. Experience of cervical screening (age 25-64, NOT Trans)

% within PCT

		Experience of cervical screening				Total
		Never had cervical smear	I have had a smear test in the last 3 years	I have had a smear test in the past 3-5 years	I had a smear test more than 5 years ago	
PCT	Cumbria	12.5%	50.0%	12.5%	25.0%	100.0%
	North Lancashire T.	4.0%	76.0%	8.0%	12.0%	100.0%
	Blackpool	20.0%	33.3%	26.7%	20.0%	100.0%
	Sefton	20.0%	53.3%	13.3%	13.3%	100.0%
	Central Lancashire	10.0%	80.0%	10.0%		100.0%
	Wirral	27.8%	61.1%		11.1%	100.0%
	Liverpool	32.1%	57.1%	7.1%	3.6%	100.0%
	Salford	20.0%	76.7%		3.3%	100.0%
	Trafford	19.0%	57.1%	14.3%	9.5%	100.0%
	Manchester	6.9%	62.4%	18.8%	11.9%	100.0%
	Stockport	11.8%	58.8%	11.8%	17.6%	100.0%
	C & E Cheshire	37.5%	37.5%	12.5%	12.5%	100.0%
	All other North West	12.0%	62.0%	18.5%	7.6%	100.0%
Total		14.3%	62.1%	13.8%	9.8%	100.0%

## 9. Frequency of self-checking breasts

% within PCT

		Frequency of self-checking breasts			Total
		No, I don't currently self-check	Yes, sometimes (every few months)	Yes, regularly (every month)	
PCT	Cumbria	25.0%	55.0%	20.0%	100.0%
	North Lancashire T.	24.3%	43.2%	32.4%	100.0%
	Blackpool	19.0%	42.9%	38.1%	100.0%
	Sefton	7.4%	48.1%	44.4%	100.0%
	Central Lancashire	9.1%	33.3%	57.6%	100.0%
	Wirral	7.1%	71.4%	21.4%	100.0%
	Liverpool	16.7%	35.4%	47.9%	100.0%
	Salford	15.8%	47.4%	36.8%	100.0%
	Trafford	7.4%	51.9%	40.7%	100.0%
	Manchester	24.2%	56.4%	19.5%	100.0%
	Stockport	13.0%	47.8%	39.1%	100.0%
	C & E Cheshire	10.5%	47.4%	42.1%	100.0%
	All other North West	20.4%	48.5%	31.1%	100.0%
Total		18.2%	49.3%	32.5%	100.0%

## 10. In the last year, made any attempt to take your life

% within PCT

		In the last year, made any attempt to take your life		Total
		No	Yes	
PCT	Cumbria	95.0%	5.0%	100.0%
	North Lancashire T.	97.3%	2.7%	100.0%
	Blackpool	90.5%	9.5%	100.0%
	Sefton	88.9%	11.1%	100.0%
	Central Lancashire	93.9%	6.1%	100.0%
	Wirral	96.4%	3.6%	100.0%
	Liverpool	89.4%	10.6%	100.0%
	Salford	92.1%	7.9%	100.0%
	Trafford	96.3%	3.7%	100.0%
	Manchester	96.6%	3.4%	100.0%
	Stockport	95.7%	4.3%	100.0%
	C & E Cheshire	94.7%	5.3%	100.0%
	All other North West	96.4%	3.6%	100.0%
Total		94.9%	5.1%	100.0%



**11. In the last year, deliberate self-harm (with no the intention of killing yourself)**

% within PCT

		In the last year, deliberate self-harm (with no the intention of killing yourself)		Total
		No	Yes	
PCT	Cumbria	80.0%	20.0%	100.0%
	North Lancashire T.	78.4%	21.6%	100.0%
	Blackpool	71.4%	28.6%	100.0%
	Sefton	70.4%	29.6%	100.0%
	Central Lancashire	87.9%	12.1%	100.0%
	Wirral	75.0%	25.0%	100.0%
	Liverpool	76.6%	23.4%	100.0%
	Salford	76.3%	23.7%	100.0%
	Trafford	81.5%	18.5%	100.0%
	Manchester	77.0%	23.0%	100.0%
	Stockport	100.0%		100.0%
	C & E Cheshire	78.9%	21.1%	100.0%
	All other North West	76.0%	24.0%	100.0%
Total		78.0%	22.0%	100.0%

**12. Ever been told you have eating problem**

% within PCT

		Ever been told you have eating problem		Total
		No	Yes	
PCT	Cumbria	75.0%	25.0%	100.0%
	North Lancashire T.	70.3%	29.7%	100.0%
	Blackpool	90.5%	9.5%	100.0%
	Sefton	70.4%	29.6%	100.0%
	Central Lancashire	84.8%	15.2%	100.0%
	Wirral	89.3%	10.7%	100.0%
	Liverpool	83.3%	16.7%	100.0%
	Salford	78.9%	21.1%	100.0%
	Trafford	80.8%	19.2%	100.0%
	Manchester	74.8%	25.2%	100.0%
	Stockport	78.3%	21.7%	100.0%
	C & E Cheshire	73.7%	26.3%	100.0%
	All other North West	77.2%	22.8%	100.0%
Total		77.9%	22.1%	100.0%

### 13. Ever experienced domestic violence

% within PCT

		Ever experienced domestic violence				Total
		No never	Yes, from a male	Yes, from a female	Yes (gender unknown)	
PCT	Cumbria	80.0%	5.0%	15.0%		100.0%
	North Lancashire T.	67.6%	8.1%	24.3%		100.0%
	Blackpool	42.9%	4.8%	52.4%		100.0%
	Sefton	74.1%	22.2%	3.7%		100.0%
	Central Lancashire	57.6%	9.1%	33.3%		100.0%
	Wirral	66.7%	11.1%	22.2%		100.0%
	Liverpool	75.0%	10.4%	14.6%		100.0%
	Salford	73.7%	10.5%	15.8%		100.0%
	Trafford	77.8%	3.7%	18.5%		100.0%
	Manchester	75.0%	6.8%	16.9%	1.4%	100.0%
	Stockport	60.9%	8.7%	21.7%	8.7%	100.0%
	C & E Cheshire	89.5%	10.5%			100.0%
	All other North West	67.1%	13.2%	19.8%		100.0%
Total		70.2%	9.9%	19.2%	.6%	100.0%

### 14. Self-rating of health

% within PCT

		Self-rating of health				Total
		Excellent	Good	Fair	Poor	
PCT	Cumbria	20.0%	70.0%	10.0%		100.0%
	North Lancashire T.	16.2%	51.4%	27.0%	5.4%	100.0%
	Blackpool	9.5%	57.1%	23.8%	9.5%	100.0%
	Sefton	18.5%	74.1%		7.4%	100.0%
	Central Lancashire	18.2%	66.7%	12.1%	3.0%	100.0%
	Wirral	10.7%	64.3%	21.4%	3.6%	100.0%
	Liverpool	20.8%	54.2%	22.9%	2.1%	100.0%
	Salford	18.4%	57.9%	21.1%	2.6%	100.0%
	Trafford	29.6%	48.1%	22.2%		100.0%
	Manchester	23.5%	59.1%	14.1%	3.4%	100.0%
	Stockport	13.0%	65.2%	21.7%		100.0%
	C & E Cheshire	15.0%	60.0%	25.0%		100.0%
	All other North West	22.2%	55.1%	21.6%	1.2%	100.0%
Total		20.2%	58.5%	18.7%	2.7%	100.0%

### 15. BMI categories

% within PCT

		BMI categories					Total
		Underweight (<18.5)	Normal (18.5 - 24.99)	Overweight (25 - 29.99)	Obese (30+)	Very Obese (40+)	
PCT	Cumbria	10.0%	45.0%	45.0%			100.0%
	North Lancashire T.	2.7%	48.6%	21.6%	24.3%	2.7%	100.0%
	Blackpool		38.1%	33.3%	23.8%	4.8%	100.0%
	Sefton	3.7%	40.7%	18.5%	25.9%	11.1%	100.0%
	Central Lancashire	6.1%	42.4%	30.3%	18.2%	3.0%	100.0%
	Wirral	3.7%	37.0%	25.9%	29.6%	3.7%	100.0%
	Liverpool		35.6%	28.9%	28.9%	6.7%	100.0%
	Salford	2.7%	37.8%	37.8%	18.9%	2.7%	100.0%
	Trafford	3.8%	50.0%	19.2%	23.1%	3.8%	100.0%
	Manchester	.7%	51.4%	28.8%	16.4%	2.7%	100.0%
	Stockport	4.3%	39.1%	39.1%	17.4%		100.0%
	C & E Cheshire	15.8%	52.6%	15.8%	15.8%		100.0%
	All other North West	3.1%	41.4%	26.5%	24.7%	4.3%	100.0%
Total		3.0%	44.0%	28.1%	21.2%	3.7%	100.0%

### 16. Sexuality disclosure to GP or health care professionals

% within PCT

		Sexuality disclosure to GP or health care professionals					Total
		All or almost all	More than half	About half	Less than half	Few or none	
PCT	Cumbria	22.2%			5.6%	72.2%	100.0%
	North Lancashire T.	27.0%	5.4%		8.1%	59.5%	100.0%
	Blackpool	47.6%		9.5%		42.9%	100.0%
	Sefton	26.9%	3.8%	11.5%		57.7%	100.0%
	Central Lancashire	39.4%	18.2%		6.1%	36.4%	100.0%
	Wirral	18.5%	11.1%	11.1%		59.3%	100.0%
	Liverpool	23.4%	12.8%	4.3%	2.1%	57.4%	100.0%
	Salford	38.9%	8.3%	5.6%	2.8%	44.4%	100.0%
	Trafford	51.9%	11.1%	3.7%		33.3%	100.0%
	Manchester	32.4%	7.6%	6.2%	6.9%	46.9%	100.0%
	Stockport	22.7%		9.1%	4.5%	63.6%	100.0%
	C & E Cheshire		16.7%		16.7%	66.7%	100.0%
	All other North West	26.7%	6.1%	4.8%	5.5%	57.0%	100.0%
Total		29.6%	7.7%	5.1%	5.0%	52.6%	100.0%

### 17. Any NEGATIVE experiences of health care in the last year

% within PCT

		Any NEGATIVE experiences of health care in the last year		Total
		No none	Yes	
PCT	Cumbria	35.0%	65.0%	100.0%
	North Lancashire T.	54.1%	45.9%	100.0%
	Blackpool	65.0%	35.0%	100.0%
	Sefton	61.5%	38.5%	100.0%
	Central Lancashire	64.5%	35.5%	100.0%
	Wirral	40.7%	59.3%	100.0%
	Liverpool	60.0%	40.0%	100.0%
	Salford	45.9%	54.1%	100.0%
	Trafford	73.1%	26.9%	100.0%
	Manchester	39.9%	60.1%	100.0%
	Stockport	72.7%	27.3%	100.0%
	C & E Cheshire	57.9%	42.1%	100.0%
	All other North West	56.4%	43.6%	100.0%
Total		53.0%	47.0%	100.0%

### 18. Health care worker assumed heterosexuality

% within PCT

		Health care worker assumed heterosexuality		Total
		No	Yes	
PCT	Cumbria	50.0%	50.0%	100.0%
	North Lancashire T.	64.9%	35.1%	100.0%
	Blackpool	75.0%	25.0%	100.0%
	Sefton	80.8%	19.2%	100.0%
	Central Lancashire	77.4%	22.6%	100.0%
	Wirral	59.3%	40.7%	100.0%
	Liverpool	73.3%	26.7%	100.0%
	Salford	54.1%	45.9%	100.0%
	Trafford	80.8%	19.2%	100.0%
	Manchester	57.6%	42.4%	100.0%
	Stockport	81.8%	18.2%	100.0%
	C & E Cheshire	78.9%	21.1%	100.0%
	All other North West	64.8%	35.2%	100.0%
Total		65.8%	34.2%	100.0%

### 19. No opportunity to discuss sexual orientation in health-care setting

% within PCT

		No opportunity to discuss sexual orientation in health-care setting		Total
		No	Yes	
PCT	Cumbria	50.0%	50.0%	100.0%
	North Lancashire T.	81.1%	18.9%	100.0%
	Blackpool	85.0%	15.0%	100.0%
	Sefton	84.6%	15.4%	100.0%
	Central Lancashire	90.3%	9.7%	100.0%
	Wirral	70.4%	29.6%	100.0%
	Liverpool	73.3%	26.7%	100.0%
	Salford	54.1%	45.9%	100.0%
	Trafford	88.5%	11.5%	100.0%
	Manchester	67.6%	32.4%	100.0%
	Stockport	90.9%	9.1%	100.0%
	C & E Cheshire	78.9%	21.1%	100.0%
	All other North West	82.4%	17.6%	100.0%
Total		76.1%	23.9%	100.0%

### 20. Not sure of GP surgery's policy on confidentiality

% within PCT

		Not sure of GP surgery's policy on confidentiality		Total
		No	Yes	
PCT	Cumbria	65.0%	35.0%	100.0%
	North Lancashire T.	86.5%	13.5%	100.0%
	Blackpool	95.0%	5.0%	100.0%
	Sefton	96.2%	3.8%	100.0%
	Central Lancashire	93.5%	6.5%	100.0%
	Wirral	88.9%	11.1%	100.0%
	Liverpool	86.7%	13.3%	100.0%
	Salford	81.1%	18.9%	100.0%
	Trafford	96.2%	3.8%	100.0%
	Manchester	84.9%	15.1%	100.0%
	Stockport	86.4%	13.6%	100.0%
	C & E Cheshire	84.2%	15.8%	100.0%
	All other North West	90.9%	9.1%	100.0%
Total		87.8%	12.2%	100.0%

**21. Came out and health care worker still assumed heterosexuality**

% within PCT

		Came out and health care worker still assumed heterosexuality		Total
		No	Yes	
PCT	Cumbria	80.0%	20.0%	100.0%
	North Lancashire T.	94.6%	5.4%	100.0%
	Blackpool	90.0%	10.0%	100.0%
	Sefton	92.3%	7.7%	100.0%
	Central Lancashire	83.9%	16.1%	100.0%
	Wirral	92.6%	7.4%	100.0%
	Liverpool	95.6%	4.4%	100.0%
	Salford	86.5%	13.5%	100.0%
	Trafford	96.2%	3.8%	100.0%
	Manchester	88.5%	11.5%	100.0%
	Stockport	90.9%	9.1%	100.0%
	C & E Cheshire	94.7%	5.3%	100.0%
	All other North West	90.3%	9.7%	100.0%
Total		90.2%	9.8%	100.0%

## 22. Came out and health-care worker asked inappropriate questions

% within PCT

		Came out and health-care worker asked inappropriate questions		Total
		No	Yes	
PCT	Cumbria	95.0%	5.0%	100.0%
	North Lancashire T.	94.6%	5.4%	100.0%
	Blackpool	95.0%	5.0%	100.0%
	Sefton	96.2%	3.8%	100.0%
	Central Lancashire	96.8%	3.2%	100.0%
	Wirral	100.0%		100.0%
	Liverpool	97.8%	2.2%	100.0%
	Salford	97.3%	2.7%	100.0%
	Trafford	100.0%		100.0%
	Manchester	92.8%	7.2%	100.0%
	Stockport	95.5%	4.5%	100.0%
	C & E Cheshire	100.0%		100.0%
	All other North West	96.4%	3.6%	100.0%
Total		95.9%	4.1%	100.0%

## 23. Any POSITIVE experiences of health care in the last year

% within PCT

		Any POSITIVE experiences of health care in the last year		Total
		None of these	Yes	
PCT	Cumbria	65.0%	35.0%	100.0%
	North Lancashire T.	51.4%	48.6%	100.0%
	Blackpool	38.1%	61.9%	100.0%
	Sefton	37.0%	63.0%	100.0%
	Central Lancashire	36.4%	63.6%	100.0%
	Wirral	50.0%	50.0%	100.0%
	Liverpool	63.8%	36.2%	100.0%
	Salford	36.8%	63.2%	100.0%
	Trafford	42.3%	57.7%	100.0%
	Manchester	42.7%	57.3%	100.0%
	Stockport	45.5%	54.5%	100.0%
	C & E Cheshire	52.6%	47.4%	100.0%
	All other North West	53.3%	46.7%	100.0%
Total		47.9%	52.1%	100.0%

## 24. Health care worker did not make inappropriate comments after disclosure

% within PCT

		Health care worker did not make inappropriate comments after disclosure		Total
		No	Yes	
PCT	Cumbria	90.0%	10.0%	100.0%
	North Lancashire T.	74.3%	25.7%	100.0%
	Blackpool	61.9%	38.1%	100.0%
	Sefton	63.0%	37.0%	100.0%
	Central Lancashire	69.7%	30.3%	100.0%
	Wirral	85.7%	14.3%	100.0%
	Liverpool	78.7%	21.3%	100.0%
	Salford	68.4%	31.6%	100.0%
	Trafford	73.1%	26.9%	100.0%
	Manchester	62.9%	37.1%	100.0%
	Stockport	72.7%	27.3%	100.0%
	C & E Cheshire	73.7%	26.3%	100.0%
	All other North West	77.2%	22.8%	100.0%
Total		72.2%	27.8%	100.0%

## 25. Acknowledgement of sexuality by health worker after disclosure

% within PCT

		Acknowledgement of sexuality by health worker after disclosure		Total
		No	Yes	
PCT	Cumbria	90.0%	10.0%	100.0%
	North Lancashire T.	77.1%	22.9%	100.0%
	Blackpool	71.4%	28.6%	100.0%
	Sefton	70.4%	29.6%	100.0%
	Central Lancashire	66.7%	33.3%	100.0%
	Wirral	82.1%	17.9%	100.0%
	Liverpool	89.4%	10.6%	100.0%
	Salford	63.2%	36.8%	100.0%
	Trafford	84.6%	15.4%	100.0%
	Manchester	74.8%	25.2%	100.0%
	Stockport	81.8%	18.2%	100.0%
	C & E Cheshire	73.7%	26.3%	100.0%
	All other North West	76.0%	24.0%	100.0%
Total		76.4%	23.6%	100.0%



## 26. Health care worker provided an opportunity to come out

% within PCT

		Health care worker provided an opportunity to come out		Total
		No	Yes	
PCT	Cumbria	100.0%		100.0%
	North Lancashire T.	100.0%		100.0%
	Blackpool	85.7%	14.3%	100.0%
	Sefton	88.9%	11.1%	100.0%
	Central Lancashire	87.9%	12.1%	100.0%
	Wirral	96.4%	3.6%	100.0%
	Liverpool	97.9%	2.1%	100.0%
	Salford	97.4%	2.6%	100.0%
	Trafford	92.3%	7.7%	100.0%
	Manchester	90.9%	9.1%	100.0%
	Stockport	90.9%	9.1%	100.0%
	C & E Cheshire	89.5%	10.5%	100.0%
	All other North West	96.4%	3.6%	100.0%
Total		93.9%	6.1%	100.0%

## 27. Health care worker welcomed partner at consultation

% within PCT

		Health care worker welcomed partner at consultation		Total
		No	Yes	
PCT	Cumbria	100.0%		100.0%
	North Lancashire T.	94.3%	5.7%	100.0%
	Blackpool	76.2%	23.8%	100.0%
	Sefton	88.9%	11.1%	100.0%
	Central Lancashire	72.7%	27.3%	100.0%
	Wirral	89.3%	10.7%	100.0%
	Liverpool	91.5%	8.5%	100.0%
	Salford	81.6%	18.4%	100.0%
	Trafford	92.3%	7.7%	100.0%
	Manchester	90.2%	9.8%	100.0%
	Stockport	81.8%	18.2%	100.0%
	C & E Cheshire	84.2%	15.8%	100.0%
	All other North West	85.0%	15.0%	100.0%
Total		87.1%	12.9%	100.0%

## 28. Health care worker gave advice accounting for my sexuality

% within PCT

		Health care worker gave advice accounting for my sexuality		Total
		No	Yes	
PCT	Cumbria	95.0%	5.0%	100.0%
	North Lancashire T.	94.3%	5.7%	100.0%
	Blackpool	85.7%	14.3%	100.0%
	Sefton	88.9%	11.1%	100.0%
	Central Lancashire	78.8%	21.2%	100.0%
	Wirral	100.0%		100.0%
	Liverpool	93.6%	6.4%	100.0%
	Salford	89.5%	10.5%	100.0%
	Trafford	96.2%	3.8%	100.0%
	Manchester	89.5%	10.5%	100.0%
	Stockport	86.4%	13.6%	100.0%
	C & E Cheshire	89.5%	10.5%	100.0%
	All other North West	94.6%	5.4%	100.0%
Total		91.5%	8.5%	100.0%

## 29. GP surgery had clear policy on confidentiality Crosstabulation

% within PCT

		GP surgery had clear policy on confidentiality		Total
		No	Yes	
PCT	Cumbria	85.0%	15.0%	100.0%
	North Lancashire T.	82.9%	17.1%	100.0%
	Blackpool	52.4%	47.6%	100.0%
	Sefton	63.0%	37.0%	100.0%
	Central Lancashire	60.6%	39.4%	100.0%
	Wirral	67.9%	32.1%	100.0%
	Liverpool	83.0%	17.0%	100.0%
	Salford	84.2%	15.8%	100.0%
	Trafford	61.5%	38.5%	100.0%
	Manchester	76.9%	23.1%	100.0%
	Stockport	77.3%	22.7%	100.0%
	C & E Cheshire	84.2%	15.8%	100.0%
	All other North West	74.3%	25.7%	100.0%
Total		74.6%	25.4%	100.0%

### 30. GP surgery displayed non-discriminatory policy including sexual orientation

% within PCT

		GP surgery displayed non-discriminatory policy including sexual orientation		Total
		No	Yes	
PCT	Cumbria	95.0%	5.0%	100.0%
	North Lancashire T.	97.1%	2.9%	100.0%
	Blackpool	90.5%	9.5%	100.0%
	Sefton	88.9%	11.1%	100.0%
	Central Lancashire	93.9%	6.1%	100.0%
	Wirral	96.4%	3.6%	100.0%
	Liverpool	95.7%	4.3%	100.0%
	Salford	89.5%	10.5%	100.0%
	Trafford	92.3%	7.7%	100.0%
	Manchester	87.4%	12.6%	100.0%
	Stockport	86.4%	13.6%	100.0%
	C & E Cheshire	94.7%	5.3%	100.0%
	All other North West	94.6%	5.4%	100.0%
Total		92.2%	7.8%	100.0%

### 31. Attended specialist health service for lesbian or bisexual women

% within PCT

		Attended specialist health service for lesbian or bisexual women		Total
		No	Yes	
PCT	Cumbria	100.0%		100.0%
	North Lancashire T.	100.0%		100.0%
	Blackpool	100.0%		100.0%
	Sefton	96.3%	3.7%	100.0%
	Central Lancashire	97.0%	3.0%	100.0%
	Wirral	100.0%		100.0%
	Liverpool	100.0%		100.0%
	Salford	100.0%		100.0%
	Trafford	96.2%	3.8%	100.0%
	Manchester	97.9%	2.1%	100.0%
	Stockport	100.0%		100.0%
	C & E Cheshire	100.0%		100.0%
	All other North West	100.0%		100.0%
Total		99.0%	1.0%	100.0%

## **The Study:**

In 2007, Stonewall and De Montfort University asked lesbian and bisexual women from Great Britain to complete a survey about their health.

The survey received 6178 responses making it the biggest survey of lesbian and bisexual women's health needs in Europe.

Eighty one per cent of respondents said that they were lesbian, and sixteen per cent said they were bisexual. Eighty five per cent of respondents live in England, nine per cent in Scotland, and five per cent in Wales. Eighty two per cent of respondents are white British, and the rest are from ethnic minorities, which is comparable with the general population. Respondents come from a wide age-range. The youngest respondent was fourteen and the oldest was 84. Fourteen per cent of respondents say that they have a disability, including physical and mental disabilities.