

# Prescription for Change

## Lesbian and bisexual women's health check 2008

### South East Coast

This report is a supplementary report to the Stonewall report **Prescription for Change: Lesbian and bisexual women's health check 2008**. This report provides further regional statistics for each country, each Strategic Health Authority, or healthboard.

#### Methodology

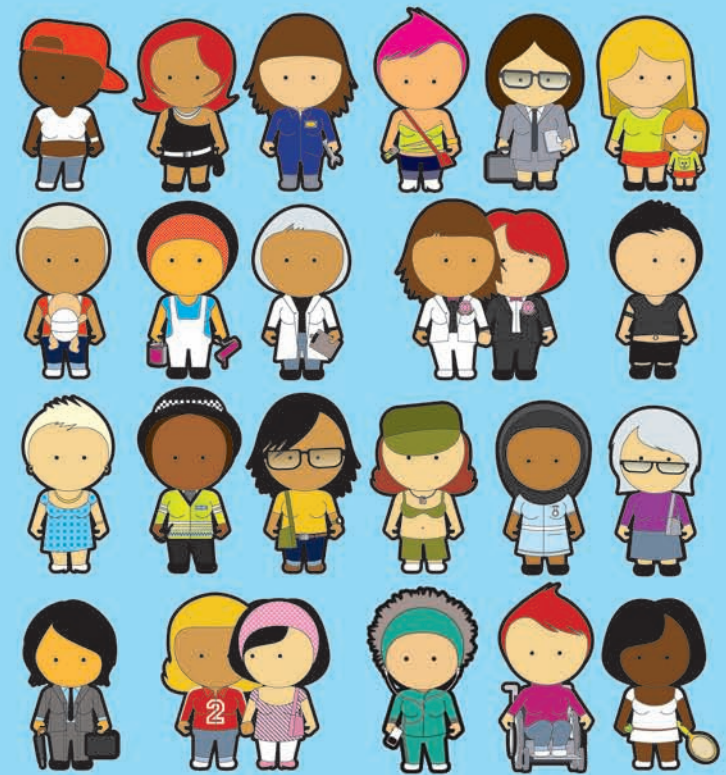
In the summer of 2007, 6178 women responded to an online and paper survey on their health needs and experiences.

The survey included questions on lifestyle (alcohol consumption, smoking, exercise, mental health), medical history and experiences of the health sector. The survey also captured qualitative evidence from participants about their experiences. These are included in the main report.

#### Guidance on using the data

This data is intended to provide NHS planners with information about their local population, in comparison to national and regional data. For nationwide statistics (Great Britain) for comparison, please refer to the main report. When citing data from this supplementary report please cite Prescription for Change: Lesbian and bisexual women's health check 2008.

Survey results analysed by Sigma Research.



# Lesbian & Bisexual Women's Health Survey 2007

## South East Coast Strategic Health Authority data report (June 2008, n=449)

### Table Contents

- 1a. Sample size by Primary Care Trust (PCT) of residence.
- 1b. Sample size by PCT of residence for following comparisons.
2. Sexual identity (*How do you describe yourself?*); Q4.
3. Current smoker; Q56.
4. Number of days drank ALCOHOL in the last week; Q60+61.
5. Used any of the following DRUGS in the last year (marijuana, ecstasy, LSD, speed, crystal meth, cocaine, crack, ketamine, GHB, heroin); Q63.
6. Ever tested for sexually transmitted infections / vaginal conditions; Q32.
7. Gender of sexual partner in the last 5 years; Q28.
8. Experience of cervical screening; Q29+Q31 (if aged 25-64 and NOT Trans).
9. Frequency of self-checking for lumps or changes in breasts; Q36.
10. In the last year, made an attempt to take your life; Q53.
11. In the last year, deliberate self-harm (not with the intention of killing yourself); Q54.
12. Ever been told you have eating problems; Q40.
13. Ever experienced domestic violence; Q70+72.
14. Self-rating of health; Q8
15. Body Mass Index; calculated from Q17+Q18.
16. Sexuality disclosure to GP and / or health care professionals.
17. Any negative experiences of health care in the last year; Q43.
18. Health care worker assumed heterosexuality.
19. No opportunity to discuss sexual orientation in health-care setting.
20. Not sure of GP surgery's policy on confidentiality.
21. Came out and health care worker still assumed heterosexuality.
22. Came out and health-care worker asked inappropriate questions.
23. Any positive experiences of health care in the last year; Q43.
24. Health care worker did not make inappropriate comments after disclosure.
25. Acknowledgment of sexuality by health worker after disclosure.
26. Health care work provided an opportunity to come out.
27. Health care worker welcomed partner at consultation.
28. Health care worker gave advice accounting for my sexuality.
29. GP surgery had clear policy on confidentiality.
30. GP surgery displayed non-discriminatory policy including sexual orientation.
31. Attended specialist health service for lesbian or bisexual women.

**1a. PCT of residence**

	Frequency	Percent	Valid Percent	Cumulative Percent
Valid Brighton and Hove City Teaching	130	29.0	29.0	29.0
Surrey	78	17.4	17.4	46.3
West Sussex	66	14.7	14.7	61.0
Eastern and Coastal Kent	59	13.1	13.1	74.2
East Sussex Downs and Weald	39	8.7	8.7	82.9
West Kent	33	7.3	7.3	90.2
Medway	19	4.2	4.2	94.4
West / Eastern & Coastal Kent PCT Unknown (Kent)	12	2.7	2.7	97.1
Hastings and Rother	12	2.7	2.7	99.8
PCT area unknown	1	.2	.2	100.0
Total	449	100.0	100.0	

**1b. PCT of residence for following comparisons**

	Frequency	Percent	Valid Percent	Cumulative Percent
Valid Brighton and Hove City Teaching	130	29.0	29.0	29.0
Surrey	78	17.4	17.4	46.3
West Sussex	66	14.7	14.7	61.0
Eastern and Coastal Kent	59	13.1	13.1	74.2
All other South East Coast	44	9.8	9.8	84.0
East Sussex Downs and Weald	39	8.7	8.7	92.7
West Kent	33	7.3	7.3	100.0
Total	449	100.0	100.0	

## 2. Sexual identity

% within PCT

		Sexual identity			Total
		Lesbian	Bisexual	Other	
PCT	Surrey	82.1%	14.1%	3.8%	100.0%
	West Kent	90.9%	6.1%	3.0%	100.0%
	Eastern and Coastal Kent	84.7%	13.6%	1.7%	100.0%
	West Sussex	78.8%	19.7%	1.5%	100.0%
	Brighton and Hove City Teaching	80.0%	15.4%	4.6%	100.0%
	East Sussex Downs and Weald	66.7%	23.1%	10.3%	100.0%
	All other South East Coast	86.4%	11.4%	2.3%	100.0%
Total		81.1%	15.1%	3.8%	100.0%

## 3. Current smoker (cigarettes)

% within PCT

		Current smoker (cigarettes)		Total
		No	Yes	
PCT	Surrey	75.6%	24.4%	100.0%
	West Kent	56.3%	43.8%	100.0%
	Eastern and Coastal Kent	69.5%	30.5%	100.0%
	West Sussex	81.5%	18.5%	100.0%
	Brighton and Hove City Teaching	79.7%	20.3%	100.0%
	East Sussex Downs and Weald	66.7%	33.3%	100.0%
	All other South East Coast	68.2%	31.8%	100.0%
Total		73.9%	26.1%	100.0%

#### 4. Number of days drank alcohol in the last week

% within PCT

		Number of days drank alcohol in the last week								Total
		No alcohol in last 7 days	1 day	2 days	3 days	4 days	5 days	6 days	7 days	
PCT	Surrey	32.4%	17.6%	12.2%	14.9%	8.1%	6.8%	2.7%	5.4%	100.0%
	West Kent	23.3%	16.7%	20.0%	3.3%	10.0%	6.7%	10.0%	10.0%	100.0%
	Eastern and Coastal Kent	26.8%	19.6%	14.3%	14.3%	7.1%	5.4%	5.4%	7.1%	100.0%
	West Sussex	13.1%	8.2%	24.6%	16.4%	11.5%	8.2%	4.9%	13.1%	100.0%
	Brighton and Hove City Teaching	16.9%	17.7%	15.3%	17.7%	11.3%	10.5%	3.2%	7.3%	100.0%
	East Sussex Downs and Weald	17.6%	20.6%	23.5%	14.7%	11.8%	5.9%	5.9%		100.0%
	All other South East Coast	16.3%	16.3%	27.9%	9.3%	14.0%		9.3%	7.0%	100.0%
Total		20.9%	16.6%	18.2%	14.5%	10.4%	7.1%	5.0%	7.3%	100.0%

#### 5. Used any of the following drugs in the last year: marijuana, ecstasy, LSD, speed, crystal meth, cocaine, crack, ketamine, GHB, heroin

% within PCT

		Used any drugs in the last year		Total
		Not last year	Yes, last year	
PCT	Surrey	70.5%	29.5%	100.0%
	West Kent	84.8%	15.2%	100.0%
	Eastern and Coastal Kent	66.1%	33.9%	100.0%
	West Sussex	69.2%	30.8%	100.0%
	Brighton and Hove City Teaching	55.0%	45.0%	100.0%
	East Sussex Downs and Weald	59.5%	40.5%	100.0%
	All other South East Coast	69.8%	30.2%	100.0%
Total		65.3%	34.7%	100.0%

## 6. Ever tested for STI / vaginal conditions

% within PCT

		Ever tested for STI / vaginal conditions		Total
		No	Yes	
PCT	Surrey	62.8%	37.2%	100.0%
	West Kent	66.7%	33.3%	100.0%
	Eastern and Coastal Kent	60.3%	39.7%	100.0%
	West Sussex	60.6%	39.4%	100.0%
	Brighton and Hove City Teaching	51.2%	48.8%	100.0%
	East Sussex Downs and Weald	56.4%	43.6%	100.0%
	All other South East Coast	52.3%	47.7%	100.0%
	Total	57.5%	42.5%	100.0%

## 7. Gender of sexual partners in last 5 years

% within PCT

		Gender of sexual partners in last 5 years				Total
		Women only	Men only	Both women and men	No one	
PCT	Surrey	65.4%	5.1%	29.5%		100.0%
	West Kent	81.8%	3.0%	15.2%		100.0%
	Eastern and Coastal Kent	59.3%		30.5%	10.2%	100.0%
	West Sussex	60.6%	1.5%	33.3%	4.5%	100.0%
	Brighton and Hove City Teaching	71.3%	1.6%	24.8%	2.3%	100.0%
	East Sussex Downs and Weald	64.1%	7.7%	25.6%	2.6%	100.0%
	All other South East Coast	59.1%	2.3%	36.4%	2.3%	100.0%
	Total	66.1%	2.7%	28.1%	3.1%	100.0%

### 8. Experience of cervical screening (age 25-64, NOT Trans)

% within PCT

		Experience of cervical screening				Total
		Never had cervical smear	I have had a smear test in the last 3 years	I have had a smear test in the past 3-5 years	I had a smear test more than 5 years ago	
PCT	Surrey	27.8%	42.6%	20.4%	9.3%	100.0%
	West Kent		54.2%	29.2%	16.7%	100.0%
	Eastern and Coastal Kent	15.2%	63.6%	6.1%	15.2%	100.0%
	West Sussex	16.2%	64.9%	16.2%	2.7%	100.0%
	Brighton and Hove City Teaching	8.2%	60.8%	14.4%	16.5%	100.0%
	East Sussex Downs and Weald	23.1%	50.0%	19.2%	7.7%	100.0%
	All other South East Coast	12.5%	75.0%	8.3%	4.2%	100.0%
Total		14.6%	58.0%	15.9%	11.5%	100.0%

### 9. Frequency of self-checking breasts

% within PCT

		Frequency of self-checking breasts			Total
		No, I don't currently self-check	Yes, sometimes (every few months)	Yes, regularly (every month)	
PCT	Surrey	21.8%	55.1%	23.1%	100.0%
	West Kent	15.2%	54.5%	30.3%	100.0%
	Eastern and Coastal Kent	17.2%	51.7%	31.0%	100.0%
	West Sussex	12.1%	54.5%	33.3%	100.0%
	Brighton and Hove City Teaching	20.0%	59.2%	20.8%	100.0%
	East Sussex Downs and Weald	26.3%	57.9%	15.8%	100.0%
	All other South East Coast	9.1%	52.3%	38.6%	100.0%
Total		17.9%	55.7%	26.4%	100.0%

**10. In the last year, made any attempt to take your life**

% within PCT

		In the last year, made any attempt to take your life		Total
		No	Yes	
PCT	Surrey	97.4%	2.6%	100.0%
	West Kent	97.0%	3.0%	100.0%
	Eastern and Coastal Kent	93.2%	6.8%	100.0%
	West Sussex	95.5%	4.5%	100.0%
	Brighton and Hove City Teaching	95.4%	4.6%	100.0%
	East Sussex Downs and Weald	84.6%	15.4%	100.0%
	All other South East Coast	90.7%	9.3%	100.0%
Total		94.2%	5.8%	100.0%

**11. In the last year, deliberate self-harm (with no the intention of killing yourself)**

% within PCT

		In the last year, deliberate self-harm (with no the intention of killing yourself)		Total
		No	Yes	
PCT	Surrey	79.5%	20.5%	100.0%
	West Kent	90.9%	9.1%	100.0%
	Eastern and Coastal Kent	79.7%	20.3%	100.0%
	West Sussex	80.3%	19.7%	100.0%
	Brighton and Hove City Teaching	83.1%	16.9%	100.0%
	East Sussex Downs and Weald	76.9%	23.1%	100.0%
	All other South East Coast	76.7%	23.3%	100.0%
Total		81.0%	19.0%	100.0%



## 12. Ever been told you have eating problem

% within PCT

		Ever been told you have eating problem		Total
		No	Yes	
PCT	Surrey	79.5%	20.5%	100.0%
	West Kent	75.8%	24.2%	100.0%
	Eastern and Coastal Kent	81.4%	18.6%	100.0%
	West Sussex	77.3%	22.7%	100.0%
	Brighton and Hove City Teaching	76.9%	23.1%	100.0%
	East Sussex Downs and Weald	79.5%	20.5%	100.0%
	All other South East Coast	67.4%	32.6%	100.0%
Total		77.2%	22.8%	100.0%

## 13. Ever experienced domestic violence

% within PCT

		Ever experienced domestic violence				Total
		No never	Yes, from a male	Yes, from a female	Yes (gender unknown)	
PCT	Surrey	76.9%	6.4%	15.4%	1.3%	100.0%
	West Kent	68.8%	15.6%	15.6%		100.0%
	Eastern and Coastal Kent	71.2%	11.9%	16.9%		100.0%
	West Sussex	68.2%	13.6%	18.2%		100.0%
	Brighton and Hove City Teaching	71.3%	9.3%	19.4%		100.0%
	East Sussex Downs and Weald	73.0%	5.4%	18.9%	2.7%	100.0%
	All other South East Coast	74.4%	7.0%	18.6%		100.0%
Total		72.1%	9.7%	17.8%	.5%	100.0%

#### 14. Self-rating of health

% within PCT

		Self-rating of health				Total
		Excellent	Good	Fair	Poor	
PCT	Surrey	15.4%	62.8%	19.2%	2.6%	100.0%
	West Kent	30.3%	48.5%	21.2%		100.0%
	Eastern and Coastal Kent	15.3%	64.4%	20.3%		100.0%
	West Sussex	18.2%	66.7%	13.6%	1.5%	100.0%
	Brighton and Hove City Teaching	25.4%	56.2%	16.9%	1.5%	100.0%
	East Sussex Downs and Weald	15.4%	74.4%	10.3%		100.0%
	All other South East Coast	9.1%	61.4%	29.5%		100.0%
Total		19.2%	61.5%	18.3%	1.1%	100.0%

#### 15. BMI categories

% within PCT

		BMI categories					Total
		Underweight (<18.5)	Normal (18.5 - 24.99)	Overweight (25 - 29.99)	Obese (30+)	Very Obese (40+)	
PCT	Surrey	1.4%	45.9%	27.0%	23.0%	2.7%	100.0%
	West Kent	6.1%	39.4%	27.3%	27.3%		100.0%
	Eastern and Coastal Kent	1.7%	61.0%	22.0%	13.6%	1.7%	100.0%
	West Sussex		54.7%	21.9%	18.8%	4.7%	100.0%
	Brighton and Hove City Teaching	3.9%	51.2%	24.4%	16.5%	3.9%	100.0%
	East Sussex Downs and Weald	2.6%	39.5%	34.2%	21.1%	2.6%	100.0%
	All other South East Coast	2.3%	50.0%	31.8%	11.4%	4.5%	100.0%
Total		2.5%	50.1%	26.0%	18.2%	3.2%	100.0%

### 16. Sexuality disclosure to GP or health care professionals

% within PCT

		Sexuality disclosure to GP or health care professionals					Total
		All or almost all	More than half	About half	Less than half	Few or none	
PCT	Surrey	39.5%	3.9%	5.3%	9.2%	42.1%	100.0%
	West Kent	40.6%	6.3%	9.4%	3.1%	40.6%	100.0%
	Eastern and Coastal Kent	35.1%	3.5%	3.5%	5.3%	52.6%	100.0%
	West Sussex	24.6%	9.2%	6.2%	9.2%	50.8%	100.0%
	Brighton and Hove City Teaching	41.7%	9.4%	6.3%	5.5%	37.0%	100.0%
	East Sussex Downs and Weald	24.3%	10.8%		16.2%	48.6%	100.0%
	All other South East Coast	41.5%	9.8%			48.8%	100.0%
Total		36.3%	7.6%	4.8%	6.9%	44.4%	100.0%

### 17. Any NEGATIVE experiences of health care in the last year

% within PCT

		Any NEGATIVE experiences of health care in the last year		Total
		No none	Yes	
PCT	Surrey	60.0%	40.0%	100.0%
	West Kent	53.1%	46.9%	100.0%
	Eastern and Coastal Kent	46.6%	53.4%	100.0%
	West Sussex	35.4%	64.6%	100.0%
	Brighton and Hove City Teaching	56.8%	43.2%	100.0%
	East Sussex Downs and Weald	47.2%	52.8%	100.0%
	All other South East Coast	45.2%	54.8%	100.0%
Total		50.6%	49.4%	100.0%

### 18. Health care worker assumed heterosexuality

% within PCT

		Health care worker assumed heterosexuality		Total
		No	Yes	
PCT	Surrey	80.0%	20.0%	100.0%
	West Kent	59.4%	40.6%	100.0%
	Eastern and Coastal Kent	60.3%	39.7%	100.0%
	West Sussex	49.2%	50.8%	100.0%
	Brighton and Hove City Teaching	65.6%	34.4%	100.0%
	East Sussex Downs and Weald	67.6%	32.4%	100.0%
	All other South East Coast	61.4%	38.6%	100.0%
	Total	64.2%	35.8%	100.0%

### 19. No opportunity to discuss sexual orientation in health-care setting

% within PCT

		No opportunity to discuss sexual orientation in health-care setting		Total
		No	Yes	
PCT	Surrey	84.0%	16.0%	100.0%
	West Kent	84.4%	15.6%	100.0%
	Eastern and Coastal Kent	70.7%	29.3%	100.0%
	West Sussex	64.6%	35.4%	100.0%
	Brighton and Hove City Teaching	83.2%	16.8%	100.0%
	East Sussex Downs and Weald	70.3%	29.7%	100.0%
	All other South East Coast	81.8%	18.2%	100.0%
	Total	77.8%	22.2%	100.0%

**20. Not sure of GP surgery's policy on confidentiality**

% within PCT

		Not sure of GP surgery's policy on confidentiality		Total
		No	Yes	
PCT	Surrey	86.7%	13.3%	100.0%
	West Kent	84.4%	15.6%	100.0%
	Eastern and Coastal Kent	84.5%	15.5%	100.0%
	West Sussex	87.7%	12.3%	100.0%
	Brighton and Hove City Teaching	88.0%	12.0%	100.0%
	East Sussex Downs and Weald	91.9%	8.1%	100.0%
	All other South East Coast	88.6%	11.4%	100.0%
	Total	87.4%	12.6%	100.0%

**21. Came out and health care worker still assumed heterosexuality**

% within PCT

		Came out and health care worker still assumed heterosexuality		Total
		No	Yes	
PCT	Surrey	93.3%	6.7%	100.0%
	West Kent	96.9%	3.1%	100.0%
	Eastern and Coastal Kent	91.4%	8.6%	100.0%
	West Sussex	87.7%	12.3%	100.0%
	Brighton and Hove City Teaching	90.4%	9.6%	100.0%
	East Sussex Downs and Weald	83.8%	16.2%	100.0%
	All other South East Coast	86.4%	13.6%	100.0%
	Total	90.1%	9.9%	100.0%

## 22. Came out and health-care worker asked inappropriate questions

% within PCT

		Came out and health-care worker asked inappropriate questions		Total
		No	Yes	
PCT	Surrey	94.7%	5.3%	100.0%
	West Kent	96.9%	3.1%	100.0%
	Eastern and Coastal Kent	94.8%	5.2%	100.0%
	West Sussex	87.7%	12.3%	100.0%
	Brighton and Hove City Teaching	92.0%	8.0%	100.0%
	East Sussex Downs and Weald	97.3%	2.7%	100.0%
	All other South East Coast	93.2%	6.8%	100.0%
Total		93.1%	6.9%	100.0%

## 23. Any POSITIVE experiences of health care in the last year

% within PCT

		Any POSITIVE experiences of health care in the last year		Total
		None of these	Yes	
PCT	Surrey	47.4%	52.6%	100.0%
	West Kent	43.8%	56.3%	100.0%
	Eastern and Coastal Kent	47.5%	52.5%	100.0%
	West Sussex	40.0%	60.0%	100.0%
	Brighton and Hove City Teaching	36.9%	63.1%	100.0%
	East Sussex Downs and Weald	51.3%	48.7%	100.0%
	All other South East Coast	39.5%	60.5%	100.0%
Total		42.6%	57.4%	100.0%

#### 24. Health care worker did not make inappropriate comments after disclosure

% within PCT

		Health care worker did not make inappropriate comments after disclosure		Total
		No	Yes	
PCT	Surrey	73.1%	26.9%	100.0%
	West Kent	65.6%	34.4%	100.0%
	Eastern and Coastal Kent	66.1%	33.9%	100.0%
	West Sussex	78.5%	21.5%	100.0%
	Brighton and Hove City Teaching	61.5%	38.5%	100.0%
	East Sussex Downs and Weald	74.4%	25.6%	100.0%
	All other South East Coast	65.1%	34.9%	100.0%
Total		68.4%	31.6%	100.0%

#### 25. Acknowledgement of sexuality by health worker after disclosure

% within PCT

		Acknowledgement of sexuality by health worker after disclosure		Total
		No	Yes	
PCT	Surrey	75.6%	24.4%	100.0%
	West Kent	71.9%	28.1%	100.0%
	Eastern and Coastal Kent	89.8%	10.2%	100.0%
	West Sussex	66.2%	33.8%	100.0%
	Brighton and Hove City Teaching	70.0%	30.0%	100.0%
	East Sussex Downs and Weald	76.9%	23.1%	100.0%
	All other South East Coast	69.8%	30.2%	100.0%
Total		73.8%	26.2%	100.0%

**26. Health care worker provided an opportunity to come out**

% within PCT

		Health care worker provided an opportunity to come out		Total
		No	Yes	
PCT	Surrey	96.2%	3.8%	100.0%
	West Kent	100.0%		100.0%
	Eastern and Coastal Kent	91.5%	8.5%	100.0%
	West Sussex	95.4%	4.6%	100.0%
	Brighton and Hove City Teaching	89.2%	10.8%	100.0%
	East Sussex Downs and Weald	89.7%	10.3%	100.0%
	All other South East Coast	90.7%	9.3%	100.0%
Total		92.6%	7.4%	100.0%

**27. Health care worker welcomed partner at consultation**

% within PCT

		Health care worker welcomed partner at consultation		Total
		No	Yes	
PCT	Surrey	89.7%	10.3%	100.0%
	West Kent	81.3%	18.8%	100.0%
	Eastern and Coastal Kent	84.7%	15.3%	100.0%
	West Sussex	86.2%	13.8%	100.0%
	Brighton and Hove City Teaching	86.9%	13.1%	100.0%
	East Sussex Downs and Weald	89.7%	10.3%	100.0%
	All other South East Coast	83.7%	16.3%	100.0%
Total		86.5%	13.5%	100.0%



**28. Health care worker gave advice accounting for my sexuality**

% within PCT

		Health care worker gave advice accounting for my sexuality		Total
		No	Yes	
PCT	Surrey	93.6%	6.4%	100.0%
	West Kent	93.8%	6.3%	100.0%
	Eastern and Coastal Kent	96.6%	3.4%	100.0%
	West Sussex	90.8%	9.2%	100.0%
	Brighton and Hove City Teaching	83.8%	16.2%	100.0%
	East Sussex Downs and Weald	94.9%	5.1%	100.0%
	All other South East Coast	93.0%	7.0%	100.0%
Total		90.8%	9.2%	100.0%

**29. GP surgery had clear policy on confidentiality**

% within PCT

		GP surgery had clear policy on confidentiality		Total
		No	Yes	
PCT	Surrey	78.2%	21.8%	100.0%
	West Kent	87.5%	12.5%	100.0%
	Eastern and Coastal Kent	78.0%	22.0%	100.0%
	West Sussex	72.3%	27.7%	100.0%
	Brighton and Hove City Teaching	77.7%	22.3%	100.0%
	East Sussex Downs and Weald	66.7%	33.3%	100.0%
	All other South East Coast	58.1%	41.9%	100.0%
Total		74.9%	25.1%	100.0%

### 30. GP surgery displayed non-discriminatory policy including sexual orientation

% within PCT

		GP surgery displayed non-discriminatory policy including sexual orientation		Total
		No	Yes	
PCT	Surrey	85.9%	14.1%	100.0%
	West Kent	90.6%	9.4%	100.0%
	Eastern and Coastal Kent	89.8%	10.2%	100.0%
	West Sussex	90.8%	9.2%	100.0%
	Brighton and Hove City Teaching	86.2%	13.8%	100.0%
	East Sussex Downs and Weald	89.7%	10.3%	100.0%
	All other South East Coast	81.4%	18.6%	100.0%
Total		87.4%	12.6%	100.0%

### 31. Attended specialist health service for lesbian or bisexual women

% within PCT

		Attended specialist health service for lesbian or bisexual women		Total
		No	Yes	
PCT	Surrey	100.0%		100.0%
	West Kent	100.0%		100.0%
	Eastern and Coastal Kent	100.0%		100.0%
	West Sussex	100.0%		100.0%
	Brighton and Hove City Teaching	97.7%	2.3%	100.0%
	East Sussex Downs and Weald	100.0%		100.0%
	All other South East Coast	97.7%	2.3%	100.0%
Total		99.1%	.9%	100.0%

## **The Study:**

In 2007, Stonewall and De Montfort University asked lesbian and bisexual women from Great Britain to complete a survey about their health.

The survey received 6178 responses making it the biggest survey of lesbian and bisexual women's health needs in Europe.

Eighty one per cent of respondents said that they were lesbian, and sixteen per cent said they were bisexual. Eighty five per cent of respondents live in England, nine per cent in Scotland, and five per cent in Wales. Eighty two per cent of respondents are white British, and the rest are from ethnic minorities, which is comparable with the general population. Respondents come from a wide age-range. The youngest respondent was fourteen and the oldest was 84. Fourteen per cent of respondents say that they have a disability, including physical and mental disabilities.