

Prescription for Change

Lesbian and bisexual women's health check 2008

South Central

This report is a supplementary report to the Stonewall report **Prescription for Change: Lesbian and bisexual women's health check 2008**. This report provides further regional statistics for each country, each Strategic Health Authority, or healthboard.

Methodology

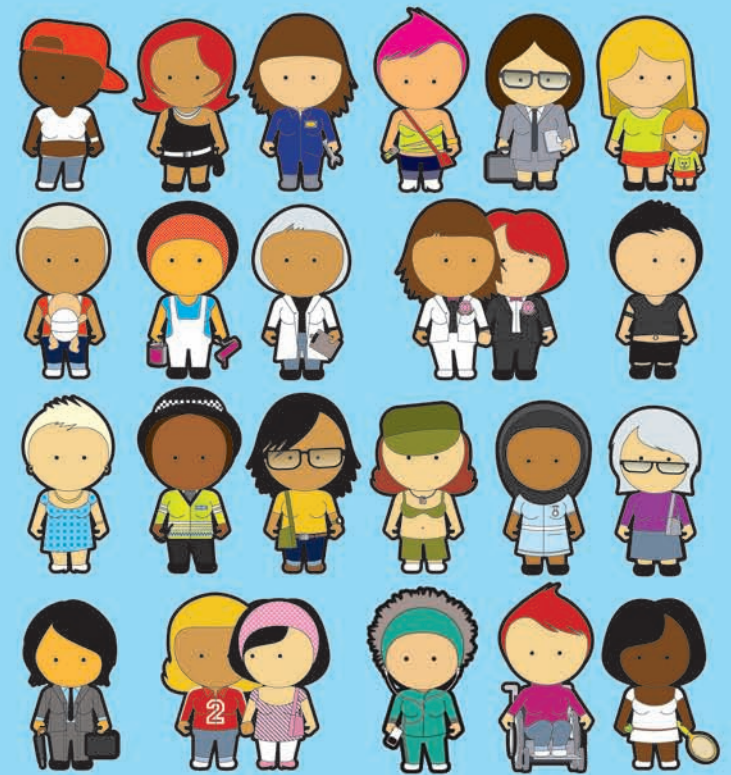
In the summer of 2007, 6178 women responded to an online and paper survey on their health needs and experiences.

The survey included questions on lifestyle (alcohol consumption, smoking, exercise, mental health), medical history and experiences of the health sector. The survey also captured qualitative evidence from participants about their experiences. These are included in the main report.

Guidance on using the data

This data is intended to provide NHS planners with information about their local population, in comparison to national and regional data. For nationwide statistics (Great Britain) for comparison, please refer to the main report. When citing data from this supplementary report please cite Prescription for Change: Lesbian and bisexual women's health check 2008.

Survey results analysed by Sigma Research.



Lesbian & Bisexual Women's Health Survey 2007

South Central Strategic Health Authority data report (June 2008, n=369)

Table Contents

- 1a. Sample size by Primary Care Trust (PCT) of residence.
- 1b. Sample size by PCT of residence for following comparisons.
2. Sexual identity (*How do you describe yourself?*); Q4.
3. Current smoker; Q56.
4. Number of days drank ALCOHOL in the last week; Q60+61.
5. Used any of the following DRUGS in the last year (marijuana, ecstasy, LSD, speed, crystal meth, cocaine, crack, ketamine, GHB, heroin); Q63.
6. Ever tested for sexually transmitted infections / vaginal conditions; Q32.
7. Gender of sexual partner in the last 5 years; Q28.
8. Experience of cervical screening; Q29+Q31 (if aged 25-64 and NOT Trans).
9. Frequency of self-checking for lumps or changes in breasts; Q36.
10. In the last year, made an attempt to take your life; Q53.
11. In the last year, deliberate self-harm (not with the intention of killing yourself); Q54.
12. Ever been told you have eating problems; Q40.
13. Ever experienced domestic violence; Q70+72.
14. Self-rating of health; Q8
15. Body Mass Index; calculated from Q17+Q18.
16. Sexuality disclosure to GP and / or health care professionals.
17. Any negative experiences of health care in the last year; Q43.
18. Health care worker assumed heterosexuality.
19. No opportunity to discuss sexual orientation in health-care setting.
20. Not sure of GP surgery's policy on confidentiality.
21. Came out and health care worker still assumed heterosexuality.
22. Came out and health-care worker asked inappropriate questions.
23. Any positive experiences of health care in the last year; Q43.
24. Health care worker did not make inappropriate comments after disclosure.
25. Acknowledgment of sexuality by health worker after disclosure.
26. Health care work provided an opportunity to come out.
27. Health care worker welcomed partner at consultation.
28. Health care worker gave advice accounting for my sexuality.
29. GP surgery had clear policy on confidentiality.
30. GP surgery displayed non-discriminatory policy including sexual orientation.
31. Attended specialist health service for lesbian or bisexual women.

1a. PCT of residence

	Frequency	Percent	Valid Percent	Cumulative Percent
Valid				
Oxfordshire	82	22.2	22.2	22.2
Hampshire	74	20.1	20.1	42.3
Portsmouth City Teaching	44	11.9	11.9	54.2
Milton Keynes	37	10.0	10.0	64.2
Berkshire West	33	8.9	8.9	73.2
Buckinghamshire	31	8.4	8.4	81.6
Southampton City	29	7.9	7.9	89.4
Berkshire East	22	6.0	6.0	95.4
Isle of Wight	12	3.3	3.3	98.6
Berkshire East / Berkshire West PCT Unknown (Berkshire)	5	1.4	1.4	100.0
Total	369	100.0	100.0	

1b. PCT of residence for following comparisons

	Frequency	Percent	Valid Percent	Cumulative Percent
Valid				
Oxfordshire	82	22.2	22.2	22.2
Hampshire	74	20.1	20.1	42.3
Portsmouth City Teaching	44	11.9	11.9	54.2
Milton Keynes	37	10.0	10.0	64.2
Berkshire West	33	8.9	8.9	73.2
Buckinghamshire	31	8.4	8.4	81.6
Southampton City	29	7.9	7.9	89.4
Berkshire East	22	6.0	6.0	95.4
All other South Central	17	4.6	4.6	100.0
Total	369	100.0	100.0	

2. Sexual identity

% within PCT

		Sexual identity			Total
		Lesbian	Bisexual	Other	
PCT	Oxfordshire	82.9%	13.4%	3.7%	100.0%
	Buckinghamshire	74.2%	22.6%	3.2%	100.0%
	Milton Keynes	78.4%	18.9%	2.7%	100.0%
	Berkshire West	66.7%	24.2%	9.1%	100.0%
	Berkshire East	77.3%	22.7%		100.0%
	Hampshire	89.2%	8.1%	2.7%	100.0%
	Southampton City	67.9%	25.0%	7.1%	100.0%
	Portsmouth City Teaching	68.2%	27.3%	4.5%	100.0%
	All other South Central	82.4%	17.6%		100.0%
Total		78.3%	17.9%	3.8%	100.0%

3. Current smoker (cigarettes)

% within PCT

		Current smoker (cigarettes)		Total
		No	Yes	
PCT	Oxfordshire	73.2%	26.8%	100.0%
	Buckinghamshire	80.6%	19.4%	100.0%
	Milton Keynes	75.0%	25.0%	100.0%
	Berkshire West	75.8%	24.2%	100.0%
	Berkshire East	86.4%	13.6%	100.0%
	Hampshire	74.3%	25.7%	100.0%
	Southampton City	72.4%	27.6%	100.0%
	Portsmouth City Teaching	59.1%	40.9%	100.0%
	All other South Central	76.5%	23.5%	100.0%
Total		73.6%	26.4%	100.0%

4. Number of days drank alcohol in the last week

% within PCT

		Number of days drank alcohol in the last week								Total
		No alcohol in last 7 days	1 day	2 days	3 days	4 days	5 days	6 days	7 days	
PCT	Oxfordshire	26.9%	19.2%	15.4%	15.4%	6.4%	6.4%	3.8%	6.4%	100.0%
	Buckinghamshire	28.6%	17.9%	21.4%	10.7%	3.6%	3.6%	3.6%	10.7%	100.0%
	Milton Keynes	26.5%	29.4%	8.8%	17.6%	2.9%	5.9%	8.8%		100.0%
	Berkshire West	16.1%	9.7%	22.6%	19.4%	9.7%	19.4%	3.2%		100.0%
	Berkshire East	28.6%	19.0%	23.8%	9.5%		9.5%	9.5%		100.0%
	Hampshire	29.6%	9.9%	19.7%	9.9%	9.9%	5.6%	5.6%	9.9%	100.0%
	Southampton City	25.9%	29.6%	22.2%	3.7%	3.7%	11.1%		3.7%	100.0%
	Portsmouth City Teaching	27.9%	27.9%	14.0%	11.6%	2.3%	11.6%	2.3%	2.3%	100.0%
	All other South Central	23.1%	15.4%	23.1%	7.7%	23.1%	7.7%			100.0%
Total		26.6%	19.1%	17.9%	12.4%	6.4%	8.4%	4.3%	4.9%	100.0%

5. Used any of the following drugs in the last year: marijuana, ecstasy, LSD, speed, crystal meth, cocaine, crack, ketamine, GHB, heroin

% within PCT

		Used drugs in the last year		Total
		Not last year	Yes, last year	
PCT	Oxfordshire	72.0%	28.0%	100.0%
	Buckinghamshire	80.0%	20.0%	100.0%
	Milton Keynes	58.3%	41.7%	100.0%
	Berkshire West	63.6%	36.4%	100.0%
	Berkshire East	77.3%	22.7%	100.0%
	Hampshire	75.7%	24.3%	100.0%
	Southampton City	82.8%	17.2%	100.0%
	Portsmouth City Teaching	55.8%	44.2%	100.0%
	All other South Central	68.8%	31.3%	100.0%
Total		70.4%	29.6%	100.0%

6. Ever tested for STI / vaginal conditions

% within PCT

		Ever tested for STI / vaginal conditions		Total
		No	Yes	
PCT	Oxfordshire	51.9%	48.1%	100.0%
	Buckinghamshire	51.6%	48.4%	100.0%
	Milton Keynes	47.2%	52.8%	100.0%
	Berkshire West	39.4%	60.6%	100.0%
	Berkshire East	63.6%	36.4%	100.0%
	Hampshire	57.5%	42.5%	100.0%
	Southampton City	75.9%	24.1%	100.0%
	Portsmouth City Teaching	56.8%	43.2%	100.0%
	All other South Central	64.7%	35.3%	100.0%
Total		55.2%	44.8%	100.0%

7. Gender of sexual partners in last 5 years

% within PCT

		Gender of sexual partners in last 5 years				Total
		Women only	Men only	Both women and men	No one	
PCT	Oxfordshire	61.0%		35.4%	3.7%	100.0%
	Buckinghamshire	58.1%		35.5%	6.5%	100.0%
	Milton Keynes	52.8%	2.8%	41.7%	2.8%	100.0%
	Berkshire West	57.6%	3.0%	36.4%	3.0%	100.0%
	Berkshire East	68.2%	4.5%	22.7%	4.5%	100.0%
	Hampshire	60.8%	2.7%	28.4%	8.1%	100.0%
	Southampton City	69.0%		31.0%		100.0%
	Portsmouth City Teaching	47.7%	11.4%	38.6%	2.3%	100.0%
	All other South Central	52.9%	5.9%	29.4%	11.8%	100.0%
Total		58.7%	3.0%	33.7%	4.6%	100.0%

8. Experience of cervical screening (aged 25-64, NOT Trans)

% within PCT

		Experience of cervical screening				Total
		Never had cervical smear	I have had a smear test in the last 3 years	I have had a smear test in the past 3-5 years	I had a smear test more than 5 years ago	
PCT	Oxfordshire	20.0%	54.5%	16.4%	9.1%	100.0%
	Buckinghamshire	19.0%	47.6%	19.0%	14.3%	100.0%
	Milton Keynes	5.3%	57.9%	21.1%	15.8%	100.0%
	Berkshire West	17.6%	47.1%	17.6%	17.6%	100.0%
	Berkshire East	20.0%	60.0%	20.0%		100.0%
	Hampshire	32.6%	41.9%	14.0%	11.6%	100.0%
	Southampton City	15.0%	60.0%	5.0%	20.0%	100.0%
	Portsmouth City Teaching	20.7%	34.5%	34.5%	10.3%	100.0%
	All other South Central	25.0%	75.0%			100.0%
Total		20.7%	50.2%	17.6%	11.5%	100.0%

9. Frequency of self-checking breasts

% within PCT

		Frequency of self-checking breasts			Total
		No, I don't currently self-check	Yes, sometimes (every few months)	Yes, regularly (every month)	
PCT	Oxfordshire	23.5%	45.7%	30.9%	100.0%
	Buckinghamshire	19.4%	51.6%	29.0%	100.0%
	Milton Keynes	16.7%	50.0%	33.3%	100.0%
	Berkshire West	18.2%	42.4%	39.4%	100.0%
	Berkshire East	13.6%	54.5%	31.8%	100.0%
	Hampshire	12.2%	44.6%	43.2%	100.0%
	Southampton City	17.2%	51.7%	31.0%	100.0%
	Portsmouth City Teaching	18.6%	46.5%	34.9%	100.0%
	All other South Central	23.5%	47.1%	29.4%	100.0%
Total		18.0%	47.3%	34.7%	100.0%

10. In the last year, made any attempt to take your life

% within PCT

		In the last year, made any attempt to take your life		Total
		No	Yes	
PCT	Oxfordshire	97.5%	2.5%	100.0%
	Buckinghamshire	96.8%	3.2%	100.0%
	Milton Keynes	83.3%	16.7%	100.0%
	Berkshire West	97.0%	3.0%	100.0%
	Berkshire East	95.5%	4.5%	100.0%
	Hampshire	94.6%	5.4%	100.0%
	Southampton City	92.9%	7.1%	100.0%
	Portsmouth City Teaching	100.0%		100.0%
	All other South Central	94.1%	5.9%	100.0%
Total		95.1%	4.9%	100.0%

11. In the last year, deliberate self-harm (with no the intention of killing yourself)

% within PCT

		In the last year, deliberate self-harm (with no the intention of killing yourself)		Total
		No	Yes	
PCT	Oxfordshire	77.8%	22.2%	100.0%
	Buckinghamshire	71.0%	29.0%	100.0%
	Milton Keynes	61.1%	38.9%	100.0%
	Berkshire West	72.7%	27.3%	100.0%
	Berkshire East	77.3%	22.7%	100.0%
	Hampshire	82.4%	17.6%	100.0%
	Southampton City	79.3%	20.7%	100.0%
	Portsmouth City Teaching	76.7%	23.3%	100.0%
	All other South Central	88.2%	11.8%	100.0%
Total		76.5%	23.5%	100.0%

12. Ever been told you have eating problem

% within PCT

		Ever been told you have eating problem		Total
		No	Yes	
PCT	Oxfordshire	76.8%	23.2%	100.0%
	Buckinghamshire	80.6%	19.4%	100.0%
	Milton Keynes	72.2%	27.8%	100.0%
	Berkshire West	87.9%	12.1%	100.0%
	Berkshire East	72.7%	27.3%	100.0%
	Hampshire	79.7%	20.3%	100.0%
	Southampton City	79.3%	20.7%	100.0%
	Portsmouth City Teaching	72.7%	27.3%	100.0%
	All other South Central	88.2%	11.8%	100.0%
Total		78.3%	21.7%	100.0%

13. Ever experienced domestic violence

% within PCT

		Ever experienced domestic violence			Total
		No never	Yes, from a male	Yes, from a female	
PCT	Oxfordshire	80.5%	7.3%	12.2%	100.0%
	Buckinghamshire	70.0%	13.3%	16.7%	100.0%
	Milton Keynes	66.7%	19.4%	13.9%	100.0%
	Berkshire West	72.7%	15.2%	12.1%	100.0%
	Berkshire East	81.8%	4.5%	13.6%	100.0%
	Hampshire	73.0%	13.5%	13.5%	100.0%
	Southampton City	79.3%	3.4%	17.2%	100.0%
	Portsmouth City Teaching	79.5%	11.4%	9.1%	100.0%
	All other South Central	76.5%	17.6%	5.9%	100.0%
Total		75.7%	11.4%	12.8%	100.0%

14. Self-rating of health

% within PCT

		Self-rating of health				Total
		Excellent	Good	Fair	Poor	
PCT	Oxfordshire	31.7%	53.7%	12.2%	2.4%	100.0%
	Buckinghamshire	16.1%	67.7%	16.1%		100.0%
	Milton Keynes	19.4%	50.0%	30.6%		100.0%
	Berkshire West	18.2%	63.6%	18.2%		100.0%
	Berkshire East	27.3%	63.6%	9.1%		100.0%
	Hampshire	24.3%	56.8%	17.6%	1.4%	100.0%
	Southampton City	24.1%	37.9%	37.9%		100.0%
	Portsmouth City Teaching	29.5%	43.2%	25.0%	2.3%	100.0%
	All other South Central	35.3%	41.2%	23.5%		100.0%
Total		25.5%	53.5%	19.8%	1.1%	100.0%

15. BMI categories

% within PCT

		BMI categories					Total
		Underweight (<18.5)	Normal (18.5 - 24.99)	Overweight (25 - 29.99)	Obese (30+)	Very Obese (40+)	
PCT	Oxfordshire	3.8%	59.5%	19.0%	17.7%		100.0%
	Buckinghamshire	10.0%	40.0%	33.3%	13.3%	3.3%	100.0%
	Milton Keynes	8.8%	44.1%	17.6%	20.6%	8.8%	100.0%
	Berkshire West	9.1%	42.4%	27.3%	18.2%	3.0%	100.0%
	Berkshire East		28.6%	47.6%	19.0%	4.8%	100.0%
	Hampshire	5.5%	39.7%	27.4%	21.9%	5.5%	100.0%
	Southampton City		58.6%	24.1%	10.3%	6.9%	100.0%
	Portsmouth City Teaching	2.4%	59.5%	21.4%	14.3%	2.4%	100.0%
	All other South Central		41.2%	29.4%	17.6%	11.8%	100.0%
Total		4.7%	48.0%	25.4%	17.6%	4.2%	100.0%

16. Sexuality disclosure to GP or health care professionals

% within PCT

		Sexuality disclosure to GP or health care professionals					Total
		All or almost all	More than half	About half	Less than half	Few or none	
PCT	Oxfordshire	30.9%	6.2%	7.4%	7.4%	48.1%	100.0%
	Buckinghamshire	31.0%		10.3%		58.6%	100.0%
	Milton Keynes	37.1%		8.6%	2.9%	51.4%	100.0%
	Berkshire West	12.1%	9.1%	6.1%	15.2%	57.6%	100.0%
	Berkshire East	31.8%		13.6%	9.1%	45.5%	100.0%
	Hampshire	26.8%	9.9%	9.9%	2.8%	50.7%	100.0%
	Southampton City	31.0%	6.9%	3.4%	3.4%	55.2%	100.0%
	Portsmouth City Teaching	31.8%	9.1%	2.3%	9.1%	47.7%	100.0%
	All other South Central	23.5%	11.8%	5.9%	5.9%	52.9%	100.0%
Total		28.8%	6.4%	7.5%	6.1%	51.2%	100.0%

17. Any NEGATIVE experiences of health care in the last year

% within PCT

		Any NEGATIVE experiences of health care in the last year		Total
		No none	Yes	
PCT	Oxfordshire	61.0%	39.0%	100.0%
	Buckinghamshire	46.4%	53.6%	100.0%
	Milton Keynes	44.4%	55.6%	100.0%
	Berkshire West	37.5%	62.5%	100.0%
	Berkshire East	27.3%	72.7%	100.0%
	Hampshire	55.7%	44.3%	100.0%
	Southampton City	48.1%	51.9%	100.0%
	Portsmouth City Teaching	46.3%	53.7%	100.0%
	All other South Central	56.3%	43.8%	100.0%
Total		49.9%	50.1%	100.0%

18. Health care worker assumed heterosexuality

% within PCT

		Health care worker assumed heterosexuality		Total
		No	Yes	
PCT	Oxfordshire	72.7%	27.3%	100.0%
	Buckinghamshire	60.7%	39.3%	100.0%
	Milton Keynes	61.1%	38.9%	100.0%
	Berkshire West	56.3%	43.8%	100.0%
	Berkshire East	45.5%	54.5%	100.0%
	Hampshire	71.4%	28.6%	100.0%
	Southampton City	51.9%	48.1%	100.0%
	Portsmouth City Teaching	53.7%	46.3%	100.0%
	All other South Central	68.8%	31.3%	100.0%
Total		63.0%	37.0%	100.0%

19. No opportunity to discuss sexual orientation in health-care setting

% within PCT

		No opportunity to discuss sexual orientation in health-care setting		Total
		No	Yes	
PCT	Oxfordshire	84.4%	15.6%	100.0%
	Buckinghamshire	71.4%	28.6%	100.0%
	Milton Keynes	83.3%	16.7%	100.0%
	Berkshire West	62.5%	37.5%	100.0%
	Berkshire East	54.5%	45.5%	100.0%
	Hampshire	82.9%	17.1%	100.0%
	Southampton City	66.7%	33.3%	100.0%
	Portsmouth City Teaching	78.0%	22.0%	100.0%
	All other South Central	87.5%	12.5%	100.0%
Total		77.1%	22.9%	100.0%

20. Not sure of GP surgery's policy on confidentiality

% within PCT

		Not sure of GP surgery's policy on confidentiality		Total
		No	Yes	
PCT	Oxfordshire	89.6%	10.4%	100.0%
	Buckinghamshire	85.7%	14.3%	100.0%
	Milton Keynes	86.1%	13.9%	100.0%
	Berkshire West	78.1%	21.9%	100.0%
	Berkshire East	86.4%	13.6%	100.0%
	Hampshire	87.1%	12.9%	100.0%
	Southampton City	85.2%	14.8%	100.0%
	Portsmouth City Teaching	87.8%	12.2%	100.0%
	All other South Central	81.3%	18.8%	100.0%
Total	86.2%	13.8%	100.0%	

21. Came out and health care worker still assumed heterosexuality

% within PCT

		Came out and health care worker still assumed heterosexuality		Total
		No	Yes	
PCT	Oxfordshire	96.1%	3.9%	100.0%
	Buckinghamshire	82.1%	17.9%	100.0%
	Milton Keynes	83.3%	16.7%	100.0%
	Berkshire West	96.9%	3.1%	100.0%
	Berkshire East	90.9%	9.1%	100.0%
	Hampshire	94.3%	5.7%	100.0%
	Southampton City	88.9%	11.1%	100.0%
	Portsmouth City Teaching	90.2%	9.8%	100.0%
	All other South Central	87.5%	12.5%	100.0%
Total	91.4%	8.6%	100.0%	

22. Came out and health-care worker asked inappropriate questions

% within PCT

		Came out and health-care worker asked inappropriate questions		Total
		No	Yes	
PCT	Oxfordshire	96.1%	3.9%	100.0%
	Buckinghamshire	92.9%	7.1%	100.0%
	Milton Keynes	97.2%	2.8%	100.0%
	Berkshire West	96.9%	3.1%	100.0%
	Berkshire East	81.8%	18.2%	100.0%
	Hampshire	94.3%	5.7%	100.0%
	Southampton City	100.0%		100.0%
	Portsmouth City Teaching	95.1%	4.9%	100.0%
	All other South Central	93.8%	6.3%	100.0%
Total		94.8%	5.2%	100.0%

23. Any POSITIVE experiences of health care in the last year

% within PCT

		Any POSITIVE experiences of health care in the last year		Total
		None of these	Yes	
PCT	Oxfordshire	38.3%	61.7%	100.0%
	Buckinghamshire	48.4%	51.6%	100.0%
	Milton Keynes	44.1%	55.9%	100.0%
	Berkshire West	48.5%	51.5%	100.0%
	Berkshire East	47.6%	52.4%	100.0%
	Hampshire	59.5%	40.5%	100.0%
	Southampton City	37.9%	62.1%	100.0%
	Portsmouth City Teaching	41.9%	58.1%	100.0%
	All other South Central	41.2%	58.8%	100.0%
Total		46.0%	54.0%	100.0%

24. Health care worker did not make inappropriate comments after disclosure

% within PCT

		Health care worker did not make inappropriate comments after disclosure		Total
		No	Yes	
PCT	Oxfordshire	65.4%	34.6%	100.0%
	Buckinghamshire	77.4%	22.6%	100.0%
	Milton Keynes	64.7%	35.3%	100.0%
	Berkshire West	66.7%	33.3%	100.0%
	Berkshire East	71.4%	28.6%	100.0%
	Hampshire	74.3%	25.7%	100.0%
	Southampton City	65.5%	34.5%	100.0%
	Portsmouth City Teaching	74.4%	25.6%	100.0%
	All other South Central	58.8%	41.2%	100.0%
Total		69.4%	30.6%	100.0%

25. Acknowledgement of sexuality by health worker after disclosure

% within PCT

		Acknowledgement of sexuality by health worker after disclosure		Total
		No	Yes	
PCT	Oxfordshire	74.1%	25.9%	100.0%
	Buckinghamshire	83.9%	16.1%	100.0%
	Milton Keynes	76.5%	23.5%	100.0%
	Berkshire West	72.7%	27.3%	100.0%
	Berkshire East	71.4%	28.6%	100.0%
	Hampshire	81.1%	18.9%	100.0%
	Southampton City	65.5%	34.5%	100.0%
	Portsmouth City Teaching	79.1%	20.9%	100.0%
	All other South Central	88.2%	11.8%	100.0%
Total		76.9%	23.1%	100.0%

26. Health care worker provided an opportunity to come out

% within PCT

		Health care worker provided an opportunity to come out		Total
		No	Yes	
PCT	Oxfordshire	90.1%	9.9%	100.0%
	Buckinghamshire	96.8%	3.2%	100.0%
	Milton Keynes	91.2%	8.8%	100.0%
	Berkshire West	93.9%	6.1%	100.0%
	Berkshire East	90.5%	9.5%	100.0%
	Hampshire	98.6%	1.4%	100.0%
	Southampton City	89.7%	10.3%	100.0%
	Portsmouth City Teaching	95.3%	4.7%	100.0%
	All other South Central	100.0%		100.0%
Total		93.9%	6.1%	100.0%

27. Health care worker welcomed partner at consultation

% within PCT

		Health care worker welcomed partner at consultation		Total
		No	Yes	
PCT	Oxfordshire	91.4%	8.6%	100.0%
	Buckinghamshire	90.3%	9.7%	100.0%
	Milton Keynes	79.4%	20.6%	100.0%
	Berkshire West	97.0%	3.0%	100.0%
	Berkshire East	85.7%	14.3%	100.0%
	Hampshire	93.2%	6.8%	100.0%
	Southampton City	89.7%	10.3%	100.0%
	Portsmouth City Teaching	88.4%	11.6%	100.0%
	All other South Central	94.1%	5.9%	100.0%
Total		90.4%	9.6%	100.0%

28. Health care worker gave advice accounting for my sexuality

% within PCT

		Health care worker gave advice accounting for my sexuality		Total
		No	Yes	
PCT	Oxfordshire	86.4%	13.6%	100.0%
	Buckinghamshire	80.6%	19.4%	100.0%
	Milton Keynes	91.2%	8.8%	100.0%
	Berkshire West	87.9%	12.1%	100.0%
	Berkshire East	90.5%	9.5%	100.0%
	Hampshire	93.2%	6.8%	100.0%
	Southampton City	93.1%	6.9%	100.0%
	Portsmouth City Teaching	90.7%	9.3%	100.0%
	All other South Central	88.2%	11.8%	100.0%
Total		89.3%	10.7%	100.0%

29. GP surgery had clear policy on confidentiality

% within PCT

		GP surgery had clear policy on confidentiality		Total
		No	Yes	
PCT	Oxfordshire	75.3%	24.7%	100.0%
	Buckinghamshire	74.2%	25.8%	100.0%
	Milton Keynes	70.6%	29.4%	100.0%
	Berkshire West	75.8%	24.2%	100.0%
	Berkshire East	85.7%	14.3%	100.0%
	Hampshire	79.7%	20.3%	100.0%
	Southampton City	65.5%	34.5%	100.0%
	Portsmouth City Teaching	72.1%	27.9%	100.0%
	All other South Central	88.2%	11.8%	100.0%
Total		75.8%	24.2%	100.0%

30. GP surgery displayed non-discriminatory policy including sexual orientation

% within PCT

		GP surgery displayed non-discriminatory policy including sexual orientation		Total
		No	Yes	
PCT	Oxfordshire	91.4%	8.6%	100.0%
	Buckinghamshire	93.5%	6.5%	100.0%
	Milton Keynes	82.4%	17.6%	100.0%
	Berkshire West	87.9%	12.1%	100.0%
	Berkshire East	100.0%		100.0%
	Hampshire	94.6%	5.4%	100.0%
	Southampton City	89.7%	10.3%	100.0%
	Portsmouth City Teaching	86.0%	14.0%	100.0%
	All other South Central	94.1%	5.9%	100.0%
Total		90.9%	9.1%	100.0%

31. Attended specialist health service for lesbian or bisexual women

% within PCT

		Attended specialist health service for lesbian or bisexual women		Total
		No	Yes	
PCT	Oxfordshire	98.8%	1.2%	100.0%
	Buckinghamshire	100.0%		100.0%
	Milton Keynes	97.1%	2.9%	100.0%
	Berkshire West	100.0%		100.0%
	Berkshire East	100.0%		100.0%
	Hampshire	98.6%	1.4%	100.0%
	Southampton City	93.1%	6.9%	100.0%
	Portsmouth City Teaching	100.0%		100.0%
	All other South Central	100.0%		100.0%
Total		98.6%	1.4%	100.0%

The Study:

In 2007, Stonewall and De Montfort University asked lesbian and bisexual women from Great Britain to complete a survey about their health.

The survey received 6178 responses making it the biggest survey of lesbian and bisexual women's health needs in Europe.

Eighty one per cent of respondents said that they were lesbian, and sixteen per cent said they were bisexual. Eighty five per cent of respondents live in England, nine per cent in Scotland, and five per cent in Wales. Eighty two per cent of respondents are white British, and the rest are from ethnic minorities, which is comparable with the general population. Respondents come from a wide age-range. The youngest respondent was fourteen and the oldest was 84. Fourteen per cent of respondents say that they have a disability, including physical and mental disabilities.