

Prescription for Change

Lesbian and bisexual women's health check 2008

East Midlands

This report is a supplementary report to the Stonewall report **Prescription for Change: Lesbian and bisexual women's health check 2008**. This report provides further regional statistics for each country, each Strategic Health Authority, or healthboard.

Methodology

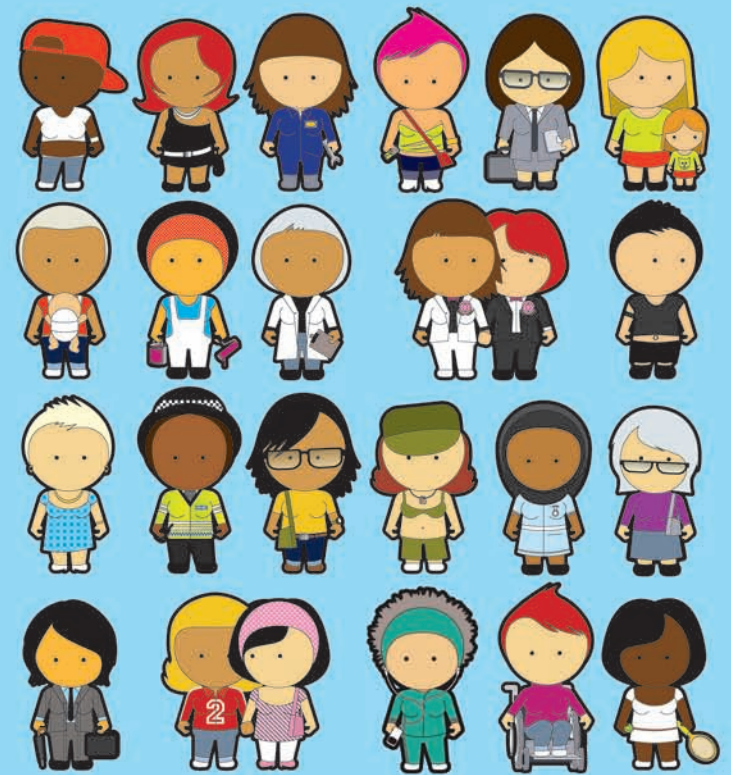
In the summer of 2007, 6178 women responded to an online and paper survey on their health needs and experiences.

The survey included questions on lifestyle (alcohol consumption, smoking, exercise, mental health), medical history and experiences of the health sector. The survey also captured qualitative evidence from participants about their experiences. These are included in the main report.

Guidance on using the data

This data is intended to provide NHS planners with information about their local population, in comparison to national and regional data. For nationwide statistics (Great Britain) for comparison, please refer to the main report. When citing data from this supplementary report please cite Prescription for Change: Lesbian and bisexual women's health check 2008.

Survey results analysed by Sigma Research.



Lesbian & Bisexual Women's Health Survey 2007

East Midlands Strategic Health Authority data report (June 2008, n=367)

Table Contents

1. Sample size by Primary Care Trust (PCT) of residence.
2. Sexual identity (*How do you describe yourself?*); Q4.
3. Current smoker; Q56.
4. Number of days drank ALCOHOL in the last week; Q60+61.
5. Used any of the following DRUGS in the last year (marijuana, ecstasy, LSD, speed, crystal meth, cocaine, crack, ketamine, GHB, heroin); Q63.
6. Ever tested for sexually transmitted infections / vaginal conditions; Q32.
7. Gender of sexual partner in the last 5 years; Q28.
8. Experience of cervical screening; Q29+Q31 (if aged 25-64 and NOT Trans).
9. Frequency of self-checking for lumps or changes in breasts; Q36.
10. In the last year, made an attempt to take your life; Q53.
11. In the last year, deliberate self-harm (not with the intention of killing yourself); Q54.
12. Ever been told you have eating problems; Q40.
13. Ever experienced domestic violence; Q70+72.
14. Self-rating of health; Q8
15. Body Mass Index; calculated from Q17+Q18.
16. Sexuality disclosure to GP and / or health care professionals.
17. Any negative experiences of health care in the last year; Q43.
18. Health care worker assumed heterosexuality.
19. No opportunity to discuss sexual orientation in health-care setting.
20. Not sure of GP surgery's policy on confidentiality.
21. Came out and health care worker still assumed heterosexuality.
22. Came out and health-care worker asked inappropriate questions.
23. Any positive experiences of health care in the last year; Q43.
24. Health care worker did not make inappropriate comments after disclosure.
25. Acknowledgment of sexuality by health worker after disclosure.
26. Health care work provided an opportunity to come out.
27. Health care worker welcomed partner at consultation.
28. Health care worker gave advice accounting for my sexuality.
29. GP surgery had clear policy on confidentiality.
30. GP surgery displayed non-discriminatory policy including sexual orientation.
31. Attended specialist health service for lesbian or bisexual women.

1. PCT of residence

	Frequency	Percent	Valid Percent	Cumulative Percent
Valid Nottingham City	60	16.0	16.0	16.0
Derbyshire County	58	15.4	15.4	31.4
Nottinghamshire County Teaching / Bassetlaw (Notts)	56	14.9	14.9	46.3
Leicester City	48	12.8	12.8	59.0
Leicestershire County and Rutland	48	12.8	12.8	71.8
Northamptonshire Teaching	46	12.2	12.2	84.0
Lincolnshire Teaching	35	9.3	9.3	93.4
Derby City	25	6.6	6.6	100.0
Total	376	100.0	100.0	

2. Sexual identity

% within PCT

	Sexual identity			Total
	Lesbian	Bisexual	Other	
PCT Derbyshire County	81.0%	17.2%	1.7%	100.0%
Derby City	76.0%	16.0%	8.0%	100.0%
Nottingham City	78.3%	18.3%	3.3%	100.0%
Nottinghamshire County Teaching / Bassetlaw (Notts)	87.5%	8.9%	3.6%	100.0%
Lincolnshire Teaching	85.7%	11.4%	2.9%	100.0%
Leicester City	87.5%	12.5%		100.0%
Leicestershire County and Rutland	77.1%	18.8%	4.2%	100.0%
Northamptonshire Teaching	84.8%	15.2%		100.0%
Total	82.4%	14.9%	2.7%	100.0%

3. Current smoker (cigarettes)

% within PCT

		Current smoker (cigarettes)		Total
		No	Yes	
PCT	Derbyshire County	77.6%	22.4%	100.0%
	Derby City	72.0%	28.0%	100.0%
	Nottingham City	81.7%	18.3%	100.0%
	Nottinghamshire County Teaching / Bassetlaw (Notts)	80.0%	20.0%	100.0%
	Lincolnshire Teaching	74.3%	25.7%	100.0%
	Leicester City	68.8%	31.3%	100.0%
	Leicestershire County and Rutland	66.7%	33.3%	100.0%
	Northamptonshire Teaching	60.9%	39.1%	100.0%
Total		73.3%	26.7%	100.0%

4. Number of days drank alcohol in the last week

% within PCT

		Number of days drank alcohol in the last week								Total
		No alcohol in last 7 days	1 day	2 days	3 days	4 days	5 days	6 days	7 days	
PCT	Derbyshire County	21.2%	23.1%	15.4%	13.5%	9.6%	1.9%	3.8%	11.5%	100.0%
	Derby City	35.0%	15.0%	5.0%	25.0%	5.0%	10.0%		5.0%	100.0%
	Nottingham City	25.4%	16.9%	15.3%	13.6%	10.2%	8.5%	1.7%	8.5%	100.0%
	Nottinghamshire County Teaching / Bassetlaw (Notts)	23.5%	17.6%	19.6%	15.7%	13.7%	7.8%		2.0%	100.0%
	Lincolnshire Teaching	21.9%	15.6%	18.8%	21.9%	6.3%	3.1%	3.1%	9.4%	100.0%
	Leicester City	8.9%	22.2%	33.3%	11.1%	11.1%	6.7%	2.2%	4.4%	100.0%
	Leicestershire County and Rutland	20.0%	11.1%	26.7%	20.0%	8.9%	6.7%	4.4%	2.2%	100.0%
	Northamptonshire Teaching	28.9%	15.6%	17.8%	15.6%	4.4%	11.1%	2.2%	4.4%	100.0%
Total		22.3%	17.5%	19.8%	16.0%	9.2%	6.9%	2.3%	6.0%	100.0%

5. Used any of the following drugs in the last year: marijuana, ecstasy, LSD, speed, crystal meth, cocaine, crack, ketamine, GHB, heroin

% within PCT

		Used any drugs in the last year		Total
		Not last year	Yes, last year	
PCT	Derbyshire County	65.5%	34.5%	100.0%
	Derby City	79.2%	20.8%	100.0%
	Nottingham City	62.1%	37.9%	100.0%
	Nottinghamshire County Teaching / Bassetlaw (Notts)	76.8%	23.2%	100.0%
	Lincolnshire Teaching	74.3%	25.7%	100.0%
	Leicester City	66.7%	33.3%	100.0%
	Leicestershire County and Rutland	79.2%	20.8%	100.0%
	Northamptonshire Teaching	57.8%	42.2%	100.0%
	Total	69.4%	30.6%	100.0%

6. Ever tested for STI / vaginal conditions

% within PCT

		Ever tested for STI / vaginal conditions		Total
		No	Yes	
PCT	Derbyshire County	50.0%	50.0%	100.0%
	Derby City	48.0%	52.0%	100.0%
	Nottingham City	52.5%	47.5%	100.0%
	Nottinghamshire County Teaching / Bassetlaw (Notts)	42.9%	57.1%	100.0%
	Lincolnshire Teaching	51.4%	48.6%	100.0%
	Leicester City	70.2%	29.8%	100.0%
	Leicestershire County and Rutland	55.3%	44.7%	100.0%
	Northamptonshire Teaching	63.0%	37.0%	100.0%
	Total	54.2%	45.8%	100.0%

7. Gender of sexual partners in last 5 years

% within PCT

		Gender of sexual partners in last 5 years				Total
		Women only	Men only	Both women and men	No one	
PCT	Derbyshire County	67.2%	1.7%	20.7%	10.3%	100.0%
	Derby City	68.0%		28.0%	4.0%	100.0%
	Nottingham City	58.3%	3.3%	35.0%	3.3%	100.0%
	Nottinghamshire County Teaching / Bassetlaw (Notts)	66.1%		28.6%	5.4%	100.0%
	Lincolnshire Teaching	74.3%	5.7%	17.1%	2.9%	100.0%
	Leicester City	79.2%	2.1%	14.6%	4.2%	100.0%
	Leicestershire County and Rutland	66.7%	2.1%	25.0%	6.3%	100.0%
	Northamptonshire Teaching	73.9%	2.2%	21.7%	2.2%	100.0%
Total		68.6%	2.1%	24.2%	5.1%	100.0%

8. Experience of cervical screening (aged 25-64, NOT Trans)

% within PCT

		Experience of cervical screening				Total
		Never had cervical smear	I have had a smear test in the last 3 years	I have had a smear test in the past 3-5 years	I had a smear test more than 5 years ago	
PCT	Derbyshire County	13.2%	60.5%	15.8%	10.5%	100.0%
	Derby City	27.3%	31.8%	22.7%	18.2%	100.0%
	Nottingham City	18.8%	64.6%	12.5%	4.2%	100.0%
	Nottinghamshire County Teaching / Bassetlaw (Notts)	2.3%	74.4%	18.6%	4.7%	100.0%
	Lincolnshire Teaching	9.5%	66.7%	9.5%	14.3%	100.0%
	Leicester City	21.6%	51.4%	13.5%	13.5%	100.0%
	Leicestershire County and Rutland	26.5%	44.1%	20.6%	8.8%	100.0%
	Northamptonshire Teaching	21.4%	64.3%	14.3%		100.0%
Total		17.0%	58.7%	15.9%	8.5%	100.0%

9. Frequency of self-checking breasts

% within PCT

	Frequency of self-checking breasts			Total
	No, I don't currently self-check	Yes, sometimes (every few months)	Yes, regularly (every month)	
PCT				
Derbyshire County	20.7%	50.0%	29.3%	100.0%
Derby City	32.0%	36.0%	32.0%	100.0%
Nottingham City	23.3%	55.0%	21.7%	100.0%
Nottinghamshire County Teaching / Bassetlaw (Notts)	30.4%	46.4%	23.2%	100.0%
Lincolnshire Teaching	17.1%	51.4%	31.4%	100.0%
Leicester City	10.4%	54.2%	35.4%	100.0%
Leicestershire County and Rutland	27.1%	43.8%	29.2%	100.0%
Northamptonshire Teaching	6.5%	60.9%	32.6%	100.0%
Total	20.7%	50.5%	28.7%	100.0%

10. In the last year, made any attempt to take your life

% within PCT

	In the last year, made any attempt to take your life		Total
	No	Yes	
PCT			
Derbyshire County	94.8%	5.2%	100.0%
Derby City	96.0%	4.0%	100.0%
Nottingham City	93.3%	6.7%	100.0%
Nottinghamshire County Teaching / Bassetlaw (Notts)	98.2%	1.8%	100.0%
Lincolnshire Teaching	94.3%	5.7%	100.0%
Leicester City	100.0%		100.0%
Leicestershire County and Rutland	95.8%	4.2%	100.0%
Northamptonshire Teaching	93.5%	6.5%	100.0%
Total	95.7%	4.3%	100.0%

11. In the last year, deliberate self-harm (with no the intention of killing yourself)

% within PCT

		In the last year, deliberate self-harm (with no the intention of killing yourself)		Total
		No	Yes	
PCT	Derbyshire County	82.8%	17.2%	100.0%
	Derby City	92.0%	8.0%	100.0%
	Nottingham City	78.3%	21.7%	100.0%
	Nottinghamshire County Teaching / Bassetlaw (Notts)	85.7%	14.3%	100.0%
	Lincolnshire Teaching	82.4%	17.6%	100.0%
	Leicester City	79.2%	20.8%	100.0%
	Leicestershire County and Rutland	85.4%	14.6%	100.0%
	Northamptonshire Teaching	80.4%	19.6%	100.0%
	Total	82.7%	17.3%	100.0%

12. Ever been told you have eating problem

% within PCT

		Ever been told you have eating problem		Total
		No	Yes	
PCT	Derbyshire County	81.0%	19.0%	100.0%
	Derby City	87.5%	12.5%	100.0%
	Nottingham City	70.0%	30.0%	100.0%
	Nottinghamshire County Teaching / Bassetlaw (Notts)	82.1%	17.9%	100.0%
	Lincolnshire Teaching	85.7%	14.3%	100.0%
	Leicester City	91.7%	8.3%	100.0%
	Leicestershire County and Rutland	81.3%	18.8%	100.0%
	Northamptonshire Teaching	80.4%	19.6%	100.0%
	Total	81.6%	18.4%	100.0%

13. Ever experienced domestic violence

% within PCT

		Ever experienced domestic violence				Total
		No never	Yes, from a male	Yes, from a female	Yes (gender unknown)	
PCT	Derbyshire County	63.8%	12.1%	22.4%	1.7%	100.0%
	Derby City	60.0%	12.0%	20.0%	8.0%	100.0%
	Nottingham City	68.3%	13.3%	16.7%	1.7%	100.0%
	Nottinghamshire County Teaching / Bassetlaw (Notts)	69.1%	14.5%	16.4%		100.0%
	Lincolnshire Teaching	60.0%	17.1%	22.9%		100.0%
	Leicester City	79.2%	12.5%	8.3%		100.0%
	Leicestershire County and Rutland	77.1%	10.4%	12.5%		100.0%
	Northamptonshire Teaching	78.3%	4.3%	17.4%		100.0%
Total		70.1%	12.0%	16.8%	1.1%	100.0%

14. Self-rating of health

% within PCT

		Self-rating of health				Total
		Excellent	Good	Fair	Poor	
PCT	Derbyshire County	27.6%	44.8%	25.9%	1.7%	100.0%
	Derby City	36.0%	48.0%	12.0%	4.0%	100.0%
	Nottingham City	21.7%	58.3%	18.3%	1.7%	100.0%
	Nottinghamshire County Teaching / Bassetlaw (Notts)	32.1%	44.6%	21.4%	1.8%	100.0%
	Lincolnshire Teaching	11.4%	74.3%	11.4%	2.9%	100.0%
	Leicester City	22.9%	60.4%	16.7%		100.0%
	Leicestershire County and Rutland	35.4%	43.8%	18.8%	2.1%	100.0%
	Northamptonshire Teaching	15.2%	65.2%	17.4%	2.2%	100.0%
Total		25.3%	54.3%	18.6%	1.9%	100.0%

15. BMI categories

% within PCT

		BMI categories					Total
		Underweight (<18.5)	Normal (18.5 - 24.99)	Overweight (25 - 29.99)	Obese (30+)	Very Obese (40+)	
PCT	Derbyshire County		62.5%	16.1%	19.6%	1.8%	100.0%
	Derby City		48.0%	36.0%	16.0%		100.0%
	Nottingham City	3.4%	50.8%	23.7%	18.6%	3.4%	100.0%
	Nottinghamshire County Teaching / Bassetlaw (Notts)	3.6%	38.2%	23.6%	32.7%	1.8%	100.0%
	Lincolnshire Teaching	3.0%	45.5%	9.1%	33.3%	9.1%	100.0%
	Leicester City	6.4%	38.3%	29.8%	25.5%		100.0%
	Leicestershire County and Rutland	2.1%	63.8%	10.6%	21.3%	2.1%	100.0%
	Northamptonshire Teaching	2.3%	54.5%	22.7%	15.9%	4.5%	100.0%
Total		2.7%	50.5%	21.0%	23.0%	2.7%	100.0%

16. Sexuality disclosure to GP or health care professionals

% within PCT

		Sexuality disclosure to GP or health care professionals					Total
		All or almost all	More than half	About half	Less than half	Few or none	
PCT	Derbyshire County	31.6%	1.8%	10.5%		56.1%	100.0%
	Derby City	44.0%	4.0%	4.0%	8.0%	40.0%	100.0%
	Nottingham City	40.7%	5.1%	10.2%	6.8%	37.3%	100.0%
	Nottinghamshire County Teaching / Bassetlaw (Notts)	37.5%	5.4%	5.4%	5.4%	46.4%	100.0%
	Lincolnshire Teaching	25.7%	5.7%	14.3%	5.7%	48.6%	100.0%
	Leicester City	23.9%	4.3%	10.9%	8.7%	52.2%	100.0%
	Leicestershire County and Rutland	31.1%		11.1%	6.7%	51.1%	100.0%
	Northamptonshire Teaching	35.6%	2.2%	2.2%	15.6%	44.4%	100.0%
Total		33.7%	3.5%	8.7%	6.8%	47.3%	100.0%

17. Any NEGATIVE experiences of health care in the last year

% within PCT

		Any NEGATIVE experiences of health care in the last year		Total
		No none	Yes	
PCT	Derbyshire County	52.6%	47.4%	100.0%
	Derby City	56.5%	43.5%	100.0%
	Nottingham City	50.8%	49.2%	100.0%
	Nottinghamshire County Teaching / Bassetlaw (Notts)	37.7%	62.3%	100.0%
	Lincolnshire Teaching	53.1%	46.9%	100.0%
	Leicester City	54.8%	45.2%	100.0%
	Leicestershire County and Rutland	50.0%	50.0%	100.0%
	Northamptonshire Teaching	50.0%	50.0%	100.0%
	Total	50.0%	50.0%	100.0%

18. Health care worker assumed heterosexuality

% within PCT

		Health care worker assumed heterosexuality		Total
		No	Yes	
PCT	Derbyshire County	64.9%	35.1%	100.0%
	Derby City	69.6%	30.4%	100.0%
	Nottingham City	67.8%	32.2%	100.0%
	Nottinghamshire County Teaching / Bassetlaw (Notts)	50.9%	49.1%	100.0%
	Lincolnshire Teaching	62.5%	37.5%	100.0%
	Leicester City	64.3%	35.7%	100.0%
	Leicestershire County and Rutland	56.5%	43.5%	100.0%
	Northamptonshire Teaching	67.4%	32.6%	100.0%
	Total	62.6%	37.4%	100.0%

19. No opportunity to discuss sexual orientation in health-care setting

% within PCT

		No opportunity to discuss sexual orientation in health-care setting		Total
		No	Yes	
PCT	Derbyshire County	80.7%	19.3%	100.0%
	Derby City	78.3%	21.7%	100.0%
	Nottingham City	83.1%	16.9%	100.0%
	Nottinghamshire County Teaching / Bassetlaw (Notts)	75.5%	24.5%	100.0%
	Lincolnshire Teaching	75.0%	25.0%	100.0%
	Leicester City	83.3%	16.7%	100.0%
	Leicestershire County and Rutland	71.7%	28.3%	100.0%
	Northamptonshire Teaching	78.3%	21.7%	100.0%
	Total	78.5%	21.5%	100.0%

20. Not sure of GP surgery's policy on confidentiality

% within PCT

		Not sure of GP surgery's policy on confidentiality		Total
		No	Yes	
PCT	Derbyshire County	86.0%	14.0%	100.0%
	Derby City	95.7%	4.3%	100.0%
	Nottingham City	86.4%	13.6%	100.0%
	Nottinghamshire County Teaching / Bassetlaw (Notts)	81.1%	18.9%	100.0%
	Lincolnshire Teaching	90.6%	9.4%	100.0%
	Leicester City	90.5%	9.5%	100.0%
	Leicestershire County and Rutland	91.3%	8.7%	100.0%
	Northamptonshire Teaching	87.0%	13.0%	100.0%
	Total	87.7%	12.3%	100.0%

21. Came out and health care worker still assumed heterosexuality

% within PCT

		Came out and health care worker still assumed heterosexuality		Total
		No	Yes	
PCT	Derbyshire County	86.0%	14.0%	100.0%
	Derby City	82.6%	17.4%	100.0%
	Nottingham City	91.5%	8.5%	100.0%
	Nottinghamshire County Teaching / Bassetlaw (Notts)	86.8%	13.2%	100.0%
	Lincolnshire Teaching	84.4%	15.6%	100.0%
	Leicester City	95.2%	4.8%	100.0%
	Leicestershire County and Rutland	87.0%	13.0%	100.0%
	Northamptonshire Teaching	80.4%	19.6%	100.0%
Total		87.2%	12.8%	100.0%

22. Came out and health-care worker asked inappropriate questions

% within PCT

		Came out and health-care worker asked inappropriate questions		Total
		No	Yes	
PCT	Derbyshire County	98.2%	1.8%	100.0%
	Derby City	95.7%	4.3%	100.0%
	Nottingham City	93.2%	6.8%	100.0%
	Nottinghamshire County Teaching / Bassetlaw (Notts)	98.1%	1.9%	100.0%
	Lincolnshire Teaching	90.6%	9.4%	100.0%
	Leicester City	92.9%	7.1%	100.0%
	Leicestershire County and Rutland	97.8%	2.2%	100.0%
	Northamptonshire Teaching	97.8%	2.2%	100.0%
Total		95.8%	4.2%	100.0%

23. Any POSITIVE experiences of health care in the last year

% within PCT

		Any POSITIVE experiences of health care in the last year		Total
		None of these	Yes	
PCT	Derbyshire County	42.1%	57.9%	100.0%
	Derby City	56.0%	44.0%	100.0%
	Nottingham City	40.0%	60.0%	100.0%
	Nottinghamshire County Teaching / Bassetlaw (Notts)	44.6%	55.4%	100.0%
	Lincolnshire Teaching	41.2%	58.8%	100.0%
	Leicester City	56.5%	43.5%	100.0%
	Leicestershire County and Rutland	48.9%	51.1%	100.0%
	Northamptonshire Teaching	41.3%	58.7%	100.0%
Total		45.5%	54.5%	100.0%

24. Health care worker did not make inappropriate comments after disclosure

% within PCT

		Health care worker did not make inappropriate comments after disclosure		Total
		No	Yes	
PCT	Derbyshire County	66.7%	33.3%	100.0%
	Derby City	92.0%	8.0%	100.0%
	Nottingham City	63.3%	36.7%	100.0%
	Nottinghamshire County Teaching / Bassetlaw (Notts)	67.9%	32.1%	100.0%
	Lincolnshire Teaching	67.6%	32.4%	100.0%
	Leicester City	73.9%	26.1%	100.0%
	Leicestershire County and Rutland	82.2%	17.8%	100.0%
	Northamptonshire Teaching	58.7%	41.3%	100.0%
Total		69.9%	30.1%	100.0%

25. Acknowledgement of sexuality by health worker after disclosure

% within PCT

		Acknowledgement of sexuality by health worker after disclosure		Total
		No	Yes	
PCT	Derbyshire County	71.9%	28.1%	100.0%
	Derby City	64.0%	36.0%	100.0%
	Nottingham City	68.3%	31.7%	100.0%
	Nottinghamshire County Teaching / Bassetlaw (Notts)	82.1%	17.9%	100.0%
	Lincolnshire Teaching	73.5%	26.5%	100.0%
	Leicester City	84.8%	15.2%	100.0%
	Leicestershire County and Rutland	80.0%	20.0%	100.0%
	Northamptonshire Teaching	71.7%	28.3%	100.0%
Total		75.1%	24.9%	100.0%

26. Health care worker provided an opportunity to come out

% within PCT

		Health care worker provided an opportunity to come out		Total
		No	Yes	
PCT	Derbyshire County	91.2%	8.8%	100.0%
	Derby City	92.0%	8.0%	100.0%
	Nottingham City	93.3%	6.7%	100.0%
	Nottinghamshire County Teaching / Bassetlaw (Notts)	91.1%	8.9%	100.0%
	Lincolnshire Teaching	94.1%	5.9%	100.0%
	Leicester City	100.0%		100.0%
	Leicestershire County and Rutland	93.3%	6.7%	100.0%
	Northamptonshire Teaching	89.1%	10.9%	100.0%
	Total	93.0%	7.0%	100.0%

27. Health care worker welcomed partner at consultation

% within PCT

		Health care worker welcomed partner at consultation		Total
		No	Yes	
PCT	Derbyshire County	82.5%	17.5%	100.0%
	Derby City	92.0%	8.0%	100.0%
	Nottingham City	88.3%	11.7%	100.0%
	Nottinghamshire County Teaching / Bassetlaw (Notts)	85.7%	14.3%	100.0%
	Lincolnshire Teaching	88.2%	11.8%	100.0%
	Leicester City	93.5%	6.5%	100.0%
	Leicestershire County and Rutland	93.3%	6.7%	100.0%
	Northamptonshire Teaching	87.0%	13.0%	100.0%
	Total	88.3%	11.7%	100.0%

28. Health care worker gave advice accounting for my sexuality

% within PCT

		Health care worker gave advice accounting for my sexuality		Total
		No	Yes	
PCT	Derbyshire County	89.5%	10.5%	100.0%
	Derby City	88.0%	12.0%	100.0%
	Nottingham City	88.3%	11.7%	100.0%
	Nottinghamshire County Teaching / Bassetlaw (Notts)	89.3%	10.7%	100.0%
	Lincolnshire Teaching	79.4%	20.6%	100.0%
	Leicester City	89.1%	10.9%	100.0%
	Leicestershire County and Rutland	88.9%	11.1%	100.0%
	Northamptonshire Teaching	89.1%	10.9%	100.0%
	Total	88.1%	11.9%	100.0%

29. GP surgery had clear policy on confidentiality

% within PCT

		GP surgery had clear policy on confidentiality		Total
		No	Yes	
PCT	Derbyshire County	66.7%	33.3%	100.0%
	Derby City	76.0%	24.0%	100.0%
	Nottingham City	85.0%	15.0%	100.0%
	Nottinghamshire County Teaching / Bassetlaw (Notts)	73.2%	26.8%	100.0%
	Lincolnshire Teaching	61.8%	38.2%	100.0%
	Leicester City	80.4%	19.6%	100.0%
	Leicestershire County and Rutland	77.8%	22.2%	100.0%
	Northamptonshire Teaching	73.9%	26.1%	100.0%
	Total	74.8%	25.2%	100.0%

30. GP surgery displayed non-discriminatory policy including sexual orientation

% within PCT

		GP surgery displayed non-discriminatory policy including sexual orientation		Total
		No	Yes	
PCT	Derbyshire County	91.2%	8.8%	100.0%
	Derby City	84.0%	16.0%	100.0%
	Nottingham City	91.7%	8.3%	100.0%
	Nottinghamshire County Teaching / Bassetlaw (Notts)	92.9%	7.1%	100.0%
	Lincolnshire Teaching	82.4%	17.6%	100.0%
	Leicester City	95.7%	4.3%	100.0%
	Leicestershire County and Rutland	97.8%	2.2%	100.0%
	Northamptonshire Teaching	89.1%	10.9%	100.0%
	Total	91.3%	8.7%	100.0%

31. Attended specialist health service for lesbian or bisexual women

% within PCT

		Attended specialist health service for lesbian or bisexual women		Total
		No	Yes	
PCT	Derbyshire County	98.2%	1.8%	100.0%
	Derby City	100.0%		100.0%
	Nottingham City	98.3%	1.7%	100.0%
	Nottinghamshire County Teaching / Bassetlaw (Notts)	100.0%		100.0%
	Lincolnshire Teaching	100.0%		100.0%
	Leicester City	100.0%		100.0%
	Leicestershire County and Rutland	100.0%		100.0%
	Northamptonshire Teaching	100.0%		100.0%
Total		99.5%	.5%	100.0%

The Study:

In 2007, Stonewall and De Montfort University asked lesbian and bisexual women from Great Britain to complete a survey about their health.

The survey received 6178 responses making it the biggest survey of lesbian and bisexual women's health needs in Europe.

Eighty one per cent of respondents said that they were lesbian, and sixteen per cent said they were bisexual. Eighty five per cent of respondents live in England, nine per cent in Scotland, and five per cent in Wales. Eighty two per cent of respondents are white British, and the rest are from ethnic minorities, which is comparable with the general population. Respondents come from a wide age-range. The youngest respondent was fourteen and the oldest was 84. Fourteen per cent of respondents say that they have a disability, including physical and mental disabilities.