

# Prescription for Change

## Lesbian and bisexual women's health check 2008

### All England

This report is a supplementary report to the Stonewall report **Prescription for Change: Lesbian and bisexual women's health check 2008**. This report provides further regional statistics for each country, each Strategic Health Authority, or healthboard.

#### Methodology

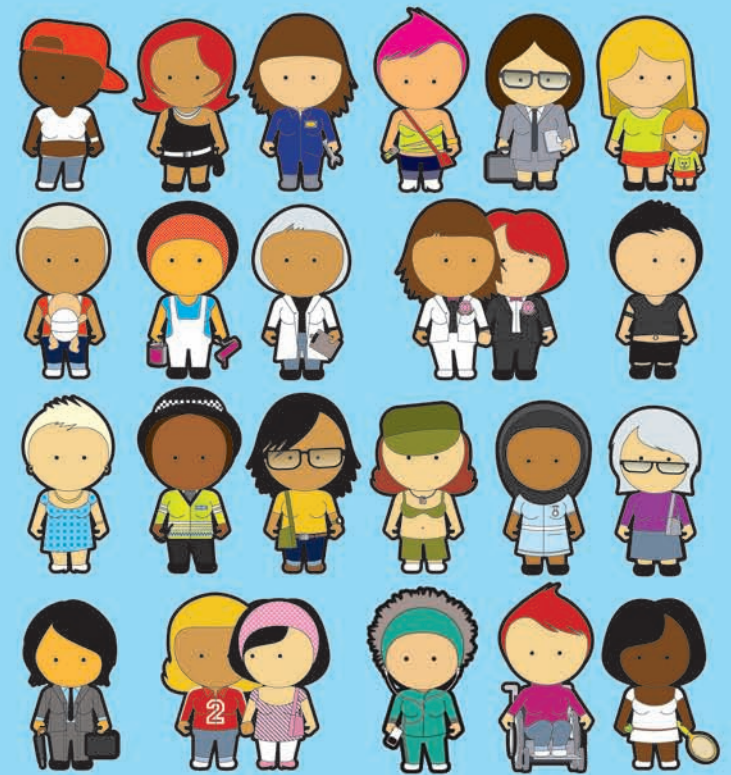
In the summer of 2007, 6178 women responded to an online and paper survey on their health needs and experiences.

The survey included questions on lifestyle (alcohol consumption, smoking, exercise, mental health), medical history and experiences of the health sector. The survey also captured qualitative evidence from participants about their experiences. These are included in the main report.

#### Guidance on using the data

This data is intended to provide NHS planners with information about their local population, in comparison to national and regional data. For nationwide statistics (Great Britain) for comparison, please refer to the main report. When citing data from this supplementary report please cite Prescription for Change: Lesbian and bisexual women's health check 2008.

Survey results analysed by Sigma Research.



# Lesbian & Bisexual Women's Health Survey 2007

## All England data report by Strategic Health Authorities of residence (June 2008)

### Table Contents

1. Sample size by Strategic Health Authority (SHA) of residence
2. Sexual identity (*How do you describe yourself?*); Q4.
3. Current smoker; Q56.
4. Number of days drank ALCOHOL in the last week; Q60+61.
5. Used any of the following DRUGS in the last year (marijuana, ecstasy, LSD, speed, crystal meth, cocaine, crack, ketamine, GHB, heroin); Q63.
6. Ever tested for sexually transmitted infections / vaginal conditions; Q32.
7. Gender of sexual partner in the last 5 years; Q28.
8. Experience of cervical screening; Q29+Q31 (if aged 25-64 and NOT Trans).
9. Frequency of self-checking for lumps or changes in breasts; Q36.
10. Ever had a breast screening test; Q37 (if aged 50 or over, NOT Trans).
11. Ever diagnosed with breast cancer; Q39 (if aged 50 or over, NOT Trans).
12. In the last year, made an attempt to take your life; Q53.
13. In the last year, deliberate self-harm (not with the intention of killing yourself); Q54.
14. Ever been told you have eating problems; Q40.
15. Ever experienced domestic violence; Q70+72.
16. Self-rating of health; Q8
17. Body Mass Index; calculated from Q17+Q18.
18. Sexuality disclosure to GP and / or health care professionals.
19. Any negative experiences of health care in the last year; Q43.
20. Health care worker assumed heterosexuality.
21. No opportunity to discuss sexual orientation in health-care setting.
22. Not sure of GP surgery's policy on confidentiality.
23. Came out and health care worker still assumed heterosexuality.
24. Came out and health-care worker asked inappropriate questions.
25. Any positive experiences of health care in the last year; Q43.
26. Health care worker did not make inappropriate comments after disclosure.
27. Acknowledgment of sexuality by health worker after disclosure.
28. Health care work provided an opportunity to come out.
29. Health care worker welcomed partner at consultation.
30. Health care worker gave advice accounting for my sexuality.
31. GP surgery had clear policy on confidentiality.
32. GP surgery displayed non-discriminatory policy including sexual orientation.
33. Attended specialist health service for lesbian or bisexual women.

## 1. Strategic Health Authority (SHA) of residence

	Frequency	Percent	Valid Percent	Cumulative Percent
Valid East of England	415	8.2	8.2	8.2
East Midlands	377	7.5	7.5	15.7
London	1330	26.4	26.4	42.1
North East	224	4.4	4.4	46.5
North West	638	12.7	12.7	59.2
South Central	369	7.3	7.3	66.5
South East Coast	449	8.9	8.9	75.4
South West	376	7.5	7.5	82.8
West Midlands	425	8.4	8.4	91.3
Yorkshire & Humber	418	8.3	8.3	99.6
England (SHA unknown)	22	.4	.4	100.0
Total	5043	100.0	100.0	

## 2. Sexual identity

% within SHA

	Sexual identity			Total
	Lesbian	Bisexual	Other	
SHA East of England	81.2%	17.6%	1.2%	100.0%
East Midlands	82.5%	14.9%	2.7%	100.0%
London	79.9%	15.7%	4.4%	100.0%
North East	79.9%	16.5%	3.6%	100.0%
North West	81.3%	15.4%	3.3%	100.0%
South Central	78.3%	17.9%	3.8%	100.0%
South East Coast	81.1%	15.1%	3.8%	100.0%
South West	82.4%	14.4%	3.2%	100.0%
West Midlands	81.6%	15.8%	2.6%	100.0%
Yorkshire & Humber	82.2%	14.2%	3.6%	100.0%
England (SHA unknown)	86.4%	13.6%		100.0%
Total	80.9%	15.7%	3.4%	100.0%

### 3. Current cigarette smoking

% within SHA

		Current cigarette smoking		Total
		No	Yes	
SHA	East of England	72.1%	27.9%	100.0%
	East Midlands	73.4%	26.6%	100.0%
	London	73.6%	26.4%	100.0%
	North East	69.4%	30.6%	100.0%
	North West	67.9%	32.1%	100.0%
	South Central	73.6%	26.4%	100.0%
	South East Coast	73.9%	26.1%	100.0%
	South West	65.9%	34.1%	100.0%
	West Midlands	71.3%	28.7%	100.0%
	Yorkshire & Humber	69.3%	30.7%	100.0%
	England (SHA unknown)	50.0%	50.0%	100.0%
Total	71.3%	28.7%	100.0%	

### 4. Number of days drinking alcohol in last week

% within SHA

		Number of days drinking alcohol in last week								Total
		No alcohol in last 7 days	1 day	2 days	3 days	4 days	5 days	6 days	7 days	
SHA	East of England	22.3%	20.7%	18.7%	13.5%	8.0%	7.0%	3.9%	6.0%	100.0%
	East Midlands	22.6%	17.4%	19.7%	16.0%	9.1%	6.9%	2.3%	6.0%	100.0%
	London	20.5%	14.0%	17.4%	17.5%	10.9%	8.5%	4.8%	6.3%	100.0%
	North East	18.6%	22.9%	20.0%	15.2%	8.6%	8.1%	1.9%	4.8%	100.0%
	North West	20.9%	17.4%	20.4%	15.2%	11.7%	6.3%	2.2%	5.9%	100.0%
	South Central	26.6%	19.1%	17.9%	12.4%	6.4%	8.4%	4.3%	4.9%	100.0%
	South East Coast	20.9%	16.6%	18.2%	14.5%	10.4%	7.1%	5.0%	7.3%	100.0%
	South West	28.5%	14.7%	18.2%	12.1%	9.5%	8.1%	4.6%	4.3%	100.0%
	West Midlands	23.3%	22.5%	18.5%	12.2%	7.6%	4.6%	3.5%	7.8%	100.0%
	Yorkshire & Humber	20.4%	21.4%	15.6%	14.5%	9.4%	9.2%	3.1%	6.4%	100.0%
	England (SHA unknown)	31.6%	15.8%	10.5%	10.5%	26.3%	5.3%			100.0%
Total	22.1%	17.6%	18.3%	14.9%	9.7%	7.5%	3.8%	6.1%	100.0%	

**5. Used any of the following DRUGS in the last year? marijuana, ecstasy, LSD, speed, crystal meth, cocaine, crack, ketamine, GHB, heroin**

% within SHA

		Used any DRUGS in last year		Total
		Not last year	Yes, last year	
SHA	East of England	73.2%	26.8%	100.0%
	East Midlands	69.4%	30.6%	100.0%
	London	59.0%	41.0%	100.0%
	North East	65.3%	34.7%	100.0%
	North West	60.6%	39.4%	100.0%
	South Central	70.4%	29.6%	100.0%
	South East Coast	65.3%	34.7%	100.0%
	South West	65.5%	34.5%	100.0%
	West Midlands	74.4%	25.6%	100.0%
	Yorkshire & Humber	68.0%	32.0%	100.0%
	England (SHA unknown)	38.1%	61.9%	100.0%
Total	65.3%	34.7%	100.0%	

**6. Ever tested for STI / vaginal conditions**

% within SHA

		Ever tested for STI / vaginal conditions		Total
		No	Yes	
SHA	East of England	55.2%	44.8%	100.0%
	East Midlands	54.0%	46.0%	100.0%
	London	45.9%	54.1%	100.0%
	North East	52.9%	47.1%	100.0%
	North West	54.9%	45.1%	100.0%
	South Central	55.2%	44.8%	100.0%
	South East Coast	57.5%	42.5%	100.0%
	South West	56.0%	44.0%	100.0%
	West Midlands	60.7%	39.3%	100.0%
	Yorkshire & Humber	56.9%	43.1%	100.0%
	England (SHA unknown)	59.1%	40.9%	100.0%
Total	53.4%	46.6%	100.0%	

## 7. Gender of sexual partners in last five years

% within SHA

		Gender of sexual partners in last five years				Total
		Women only	Men only	Both women and men	No one	
SHA	East of England	61.1%	4.6%	30.4%	3.9%	100.0%
	East Midlands	68.7%	2.1%	24.1%	5.0%	100.0%
	London	66.0%	1.0%	29.1%	3.9%	100.0%
	North East	63.7%	3.6%	28.3%	4.5%	100.0%
	North West	60.8%	1.9%	34.2%	3.1%	100.0%
	South Central	58.7%	3.0%	33.7%	4.6%	100.0%
	South East Coast	66.1%	2.7%	28.1%	3.1%	100.0%
	South West	63.3%	1.6%	31.4%	3.7%	100.0%
	West Midlands	65.8%	.9%	29.5%	3.8%	100.0%
	Yorkshire & Humber	64.7%	3.6%	29.3%	2.4%	100.0%
	England (SHA unknown)	63.6%		31.8%	4.5%	100.0%
Total		64.2%	2.1%	29.9%	3.8%	100.0%

## 8. Ever experienced cervical screening (aged 25-64, not Trans)

% within SHA

		Ever experienced cervical screening				Total
		Never had cervical smear	I have had a smear test in the last 3 years	I have had a smear test in the past 3-5 years	I had a smear test more than 5 years ago	
SHA	East of England	17.9%	52.5%	18.3%	11.3%	100.0%
	East Midlands	16.9%	58.8%	15.8%	8.5%	100.0%
	London	14.1%	59.9%	16.5%	9.5%	100.0%
	North East	11.3%	58.9%	16.1%	13.7%	100.0%
	North West	14.3%	62.1%	13.8%	9.8%	100.0%
	South Central	20.7%	50.2%	17.6%	11.5%	100.0%
	South East Coast	14.6%	58.0%	15.9%	11.5%	100.0%
	South West	15.6%	53.3%	18.0%	13.1%	100.0%
	West Midlands	17.5%	56.4%	14.5%	11.6%	100.0%
	Yorkshire & Humber	16.6%	57.5%	18.5%	7.3%	100.0%
	England (SHA unknown)	20.0%	60.0%	20.0%		100.0%
Total		15.6%	57.7%	16.4%	10.3%	100.0%

## 9. Frequency of self-checking breasts

% within SHA

		Frequency of self-checking breasts			Total
		No, I don't currently self-check	Yes, sometimes (every few months)	Yes, regularly (every month)	
SHA	East of England	19.4%	47.9%	32.7%	100.0%
	East Midlands	20.7%	50.4%	28.9%	100.0%
	London	23.5%	50.3%	26.1%	100.0%
	North East	19.2%	46.9%	33.9%	100.0%
	North West	18.2%	49.3%	32.5%	100.0%
	South Central	18.0%	47.3%	34.7%	100.0%
	South East Coast	17.9%	55.7%	26.4%	100.0%
	South West	18.9%	51.6%	29.5%	100.0%
	West Midlands	13.5%	52.4%	34.1%	100.0%
	Yorkshire & Humber	19.1%	49.8%	31.1%	100.0%
	England (SHA unknown)	27.3%	40.9%	31.8%	100.0%
Total		19.7%	50.3%	30.0%	100.0%

## 10. Ever had a mammogram (aged 50+, not trans)

% within SHA

		Ever had mammogram					Total
		No never had a mamogram	Yes, just once	Yes, 2 or more but have stopped having them	Yes, on a regular basis	Yes, number unknown	
SHA	East of England	17.2%	24.1%	17.2%	41.4%		100.0%
	East Midlands	19.4%	25.8%	12.9%	41.9%		100.0%
	London	17.6%	16.5%	8.2%	56.5%	1.2%	100.0%
	North East	21.4%	14.3%	14.3%	50.0%		100.0%
	North West	19.4%	29.0%	12.9%	35.5%	3.2%	100.0%
	South Central	15.0%	10.0%	15.0%	60.0%		100.0%
	South East Coast	26.8%	12.2%	19.5%	41.5%		100.0%
	South West	7.5%	37.5%	10.0%	42.5%	2.5%	100.0%
	West Midlands	20.7%	24.1%	3.4%	44.8%	6.9%	100.0%
	Yorkshire & Humber	13.8%	37.9%	6.9%	41.4%		100.0%
	England (SHA unknown)		50.0%		50.0%		100.0%
Total		17.7%	23.1%	11.4%	46.4%	1.4%	100.0%

### 11. Ever had breast cancer diagnosis (aged 50+, not Trans)

% within SHA

		Ever had breast cancer diagnosis		Total
		No	Yes	
SHA	East of England	86.2%	13.8%	100.0%
	East Midlands	96.8%	3.2%	100.0%
	London	94.2%	5.8%	100.0%
	North East	100.0%		100.0%
	North West	93.5%	6.5%	100.0%
	South Central	100.0%		100.0%
	South East Coast	92.7%	7.3%	100.0%
	South West	87.5%	12.5%	100.0%
	West Midlands	92.9%	7.1%	100.0%
	Yorkshire & Humber	93.1%	6.9%	100.0%
	England (SHA unknown)	100.0%		100.0%
Total	93.2%	6.8%	100.0%	

### 12. In the last year, made any attempt to take your life

% within SHA

		In the last year, made any attempt to take your life?		Total
		No	Yes	
SHA	East of England	92.6%	7.4%	100.0%
	East Midlands	95.8%	4.2%	100.0%
	London	96.5%	3.5%	100.0%
	North East	93.6%	6.4%	100.0%
	North West	94.9%	5.1%	100.0%
	South Central	95.1%	4.9%	100.0%
	South East Coast	94.2%	5.8%	100.0%
	South West	94.4%	5.6%	100.0%
	West Midlands	94.8%	5.2%	100.0%
	Yorkshire & Humber	95.4%	4.6%	100.0%
	England (SHA unknown)	68.2%	31.8%	100.0%
Total	95.0%	5.0%	100.0%	



**13. In the last year, deliberately harmed yourself (with no the intention of killing yourself).**

% within SHA

		In the last year, deliberately harmed yourself (with no the intention of killing yourself)		Total
		No	Yes	
SHA	East of England	77.8%	22.2%	100.0%
	East Midlands	82.7%	17.3%	100.0%
	London	81.9%	18.1%	100.0%
	North East	77.4%	22.6%	100.0%
	North West	78.0%	22.0%	100.0%
	South Central	76.5%	23.5%	100.0%
	South East Coast	81.0%	19.0%	100.0%
	South West	77.1%	22.9%	100.0%
	West Midlands	84.1%	15.9%	100.0%
	Yorkshire & Humber	80.3%	19.7%	100.0%
	England (SHA unknown)	54.5%	45.5%	100.0%
Total		80.0%	20.0%	100.0%

**14. Ever told you have eating problem**

% within SHA

		Ever told you have eating problem		Total
		No	Yes	
SHA	East of England	78.7%	21.3%	100.0%
	East Midlands	81.6%	18.4%	100.0%
	London	79.2%	20.8%	100.0%
	North East	78.6%	21.4%	100.0%
	North West	77.9%	22.1%	100.0%
	South Central	78.3%	21.7%	100.0%
	South East Coast	77.2%	22.8%	100.0%
	South West	79.8%	20.2%	100.0%
	West Midlands	78.4%	21.6%	100.0%
	Yorkshire & Humber	82.5%	17.5%	100.0%
	England (SHA unknown)	68.2%	31.8%	100.0%
Total		79.1%	20.9%	100.0%

### 15. Ever experienced domestic violence

% within SHA

		Ever experienced domestic violence				Total
		No never	Yes, from a male	Yes, from a female	Yes (gender unknown)	
SHA	East of England	75.5%	8.7%	15.0%	.7%	100.0%
	East Midlands	70.2%	12.0%	16.8%	1.1%	100.0%
	London	79.6%	7.0%	13.2%	.2%	100.0%
	North East	67.0%	7.6%	24.6%	.9%	100.0%
	North West	70.2%	9.9%	19.2%	.6%	100.0%
	South Central	75.7%	11.4%	12.8%		100.0%
	South East Coast	72.1%	9.7%	17.8%	.5%	100.0%
	South West	70.9%	10.4%	18.7%		100.0%
	West Midlands	71.0%	10.9%	18.1%		100.0%
	Yorkshire & Humber	70.5%	10.3%	18.2%	1.0%	100.0%
	England (SHA unknown)	59.1%	18.2%	22.7%		100.0%
Total		73.6%	9.4%	16.6%	.4%	100.0%

### 16. General self-rating of health

% within SHA

		General description of health				Total
		Excellent	Good	Fair	Poor	
SHA	East of England	20.1%	57.5%	17.7%	4.6%	100.0%
	East Midlands	25.5%	54.1%	18.6%	1.9%	100.0%
	London	23.1%	60.0%	15.1%	1.8%	100.0%
	North East	17.4%	58.5%	22.3%	1.8%	100.0%
	North West	20.2%	58.5%	18.7%	2.7%	100.0%
	South Central	25.5%	53.5%	19.8%	1.1%	100.0%
	South East Coast	19.2%	61.5%	18.3%	1.1%	100.0%
	South West	20.2%	62.2%	16.0%	1.6%	100.0%
	West Midlands	20.5%	58.8%	18.1%	2.6%	100.0%
	Yorkshire & Humber	16.1%	63.3%	18.7%	1.9%	100.0%
	England (SHA unknown)	19.0%	52.4%	28.6%		100.0%
Total		21.2%	59.1%	17.7%	2.1%	100.0%

## 17. BMI categories

% within SHA

		BMI categories					Total
		Underweight (<18.5)	Normal (18.5 - 24.99)	Overweight (25 - 29.99)	Obese (30+)	Very Obese (40+)	
SHA	East of England	4.0%	50.6%	24.6%	16.9%	4.0%	100.0%
	East Midlands	2.7%	50.7%	21.0%	22.9%	2.7%	100.0%
	London	3.3%	54.0%	24.0%	16.1%	2.6%	100.0%
	North East	3.2%	48.6%	23.4%	22.0%	2.8%	100.0%
	North West	3.0%	44.0%	28.1%	21.2%	3.7%	100.0%
	South Central	4.7%	48.0%	25.4%	17.6%	4.2%	100.0%
	South East Coast	2.5%	50.1%	26.0%	18.2%	3.2%	100.0%
	South West	3.6%	49.5%	28.6%	16.2%	2.2%	100.0%
	West Midlands	2.4%	50.6%	24.7%	17.1%	5.1%	100.0%
	Yorkshire & Humber	4.2%	46.7%	24.9%	20.0%	4.2%	100.0%
	England (SHA unknown)	5.0%	55.0%	30.0%		10.0%	100.0%
Total	3.3%	49.9%	25.1%	18.2%	3.4%	100.0%	

## 18. Any NEGATIVE experiences of health care in the last year

% within SHA

		Any NEGATIVE experiences of health care in the last year		Total
		No none	Yes	
SHA	East of England	53.0%	47.0%	100.0%
	East Midlands	50.1%	49.9%	100.0%
	London	43.5%	56.5%	100.0%
	North East	53.3%	46.7%	100.0%
	North West	53.0%	47.0%	100.0%
	South Central	49.9%	50.1%	100.0%
	South East Coast	50.6%	49.4%	100.0%
	South West	49.6%	50.4%	100.0%
	West Midlands	43.7%	56.3%	100.0%
	Yorkshire & Humber	42.8%	57.2%	100.0%
	England (SHA unknown)	42.9%	57.1%	100.0%
Total	47.9%	52.1%	100.0%	

## 19. Sexuality disclosure to GP or health care professionals

% within SHA

		Sexuality disclosure to GP or health care professionals					Total
		All or almost all	More than half	About half	Less than half	Few or none	
SHA	East of England	28.6%	3.2%	8.0%	7.2%	53.0%	100.0%
	East Midlands	33.9%	3.5%	8.7%	6.8%	47.2%	100.0%
	London	32.3%	7.0%	7.0%	5.1%	48.6%	100.0%
	North East	36.2%	5.5%	7.8%	5.5%	45.0%	100.0%
	North West	29.6%	7.7%	5.1%	5.0%	52.6%	100.0%
	South Central	28.8%	6.4%	7.5%	6.1%	51.2%	100.0%
	South East Coast	36.3%	7.6%	4.8%	6.9%	44.4%	100.0%
	South West	37.4%	3.8%	6.0%	9.6%	43.1%	100.0%
	West Midlands	29.8%	5.8%	5.5%	7.0%	51.9%	100.0%
	Yorkshire & Humber	32.6%	4.9%	5.9%	7.6%	49.0%	100.0%
	England (SHA unknown)	22.7%		4.5%	13.6%	59.1%	100.0%
Total	32.2%	5.9%	6.6%	6.4%	49.0%	100.0%	

## 20. Health care worker/s assumed heterosexuality

% within SHA

		Health worker/s assumed heterosexuality		Total
		No	Yes	
SHA	East of England	63.3%	36.7%	100.0%
	East Midlands	62.7%	37.3%	100.0%
	London	56.5%	43.5%	100.0%
	North East	67.0%	33.0%	100.0%
	North West	65.8%	34.2%	100.0%
	South Central	63.0%	37.0%	100.0%
	South East Coast	64.2%	35.8%	100.0%
	South West	60.3%	39.7%	100.0%
	West Midlands	58.2%	41.8%	100.0%
	Yorkshire & Humber	57.8%	42.2%	100.0%
	England (SHA unknown)	66.7%	33.3%	100.0%
Total	60.9%	39.1%	100.0%	

## 21. No opportunity to discuss sexual orientation in health-care setting

% within SHA

		No opportunity to discuss sexual orientation in health-care setting		Total
		No	Yes	
SHA	East of England	82.6%	17.4%	100.0%
	East Midlands	78.6%	21.4%	100.0%
	London	75.8%	24.2%	100.0%
	North East	81.9%	18.1%	100.0%
	North West	76.1%	23.9%	100.0%
	South Central	77.1%	22.9%	100.0%
	South East Coast	77.8%	22.2%	100.0%
	South West	79.6%	20.4%	100.0%
	West Midlands	74.0%	26.0%	100.0%
	Yorkshire & Humber	74.4%	25.6%	100.0%
	England (SHA unknown)	76.2%	23.8%	100.0%
Total		77.1%	22.9%	100.0%

## 22. Not sure of GPs policy on confidentiality

% within SHA

		Not sure of policy on confidentiality		Total
		No	Yes	
SHA	East of England	90.0%	10.0%	100.0%
	East Midlands	87.7%	12.3%	100.0%
	London	83.0%	17.0%	100.0%
	North East	89.3%	10.7%	100.0%
	North West	87.8%	12.2%	100.0%
	South Central	86.2%	13.8%	100.0%
	South East Coast	87.4%	12.6%	100.0%
	South West	87.7%	12.3%	100.0%
	West Midlands	87.7%	12.3%	100.0%
	Yorkshire & Humber	84.9%	15.1%	100.0%
	England (SHA unknown)	90.5%	9.5%	100.0%
Total		86.4%	13.6%	100.0%

### 23. Came out and still assumed to be heterosexual

% within SHA

		Came out and still assumed to be heterosexual		Total
		No	Yes	
SHA	East of England	94.4%	5.6%	100.0%
	East Midlands	87.2%	12.8%	100.0%
	London	91.5%	8.5%	100.0%
	North East	90.7%	9.3%	100.0%
	North West	90.2%	9.8%	100.0%
	South Central	91.4%	8.6%	100.0%
	South East Coast	90.1%	9.9%	100.0%
	South West	91.6%	8.4%	100.0%
	West Midlands	92.1%	7.9%	100.0%
	Yorkshire & Humber	86.9%	13.1%	100.0%
	England (SHA unknown)	85.7%	14.3%	100.0%
Total	90.7%	9.3%	100.0%	

### 24. Came out and health-care worker/s asked inappropriate questions

% within SHA

		Came out and health-care worker/s asked inappropriate questions		Total
		No	Yes	
SHA	East of England	94.9%	5.1%	100.0%
	East Midlands	95.8%	4.2%	100.0%
	London	93.2%	6.8%	100.0%
	North East	95.8%	4.2%	100.0%
	North West	95.9%	4.1%	100.0%
	South Central	94.8%	5.2%	100.0%
	South East Coast	93.1%	6.9%	100.0%
	South West	95.3%	4.7%	100.0%
	West Midlands	95.1%	4.9%	100.0%
	Yorkshire & Humber	91.2%	8.8%	100.0%
	England (SHA unknown)	81.0%	19.0%	100.0%
Total	94.2%	5.8%	100.0%	

**25. Any POSITIVE experiences of health care in the last year**

% within SHA

		Any POSITIVE experiences of health care in the last year		Total
		None of these	Yes	
SHA	East of England	42.2%	57.8%	100.0%
	East Midlands	45.7%	54.3%	100.0%
	London	46.0%	54.0%	100.0%
	North East	44.3%	55.7%	100.0%
	North West	47.9%	52.1%	100.0%
	South Central	46.0%	54.0%	100.0%
	South East Coast	42.6%	57.4%	100.0%
	South West	42.2%	57.8%	100.0%
	West Midlands	49.0%	51.0%	100.0%
	Yorkshire & Humber	48.8%	51.2%	100.0%
	England (SHA unknown)	52.4%	47.6%	100.0%
Total	45.8%	54.2%	100.0%	

**26. Health worker didn't make inappropriate comments after disclosure**

% within SHA

		Health worker didn't make inappropriate comments after disclosure		Total
		No	Yes	
SHA	East of England	70.6%	29.4%	100.0%
	East Midlands	70.0%	30.0%	100.0%
	London	69.9%	30.1%	100.0%
	North East	68.3%	31.7%	100.0%
	North West	72.2%	27.8%	100.0%
	South Central	69.4%	30.6%	100.0%
	South East Coast	68.4%	31.6%	100.0%
	South West	71.4%	28.6%	100.0%
	West Midlands	75.4%	24.6%	100.0%
	Yorkshire & Humber	74.5%	25.5%	100.0%
	England (SHA unknown)	81.0%	19.0%	100.0%
Total	71.0%	29.0%	100.0%	

## 27. Acknowledgement of sexuality by health worker after disclosure

% within SHA

		Acknowledgement of sexuality by health worker after disclosure		Total
		No	Yes	
SHA	East of England	71.9%	28.1%	100.0%
	East Midlands	75.1%	24.9%	100.0%
	London	75.7%	24.3%	100.0%
	North East	76.5%	23.5%	100.0%
	North West	76.4%	23.6%	100.0%
	South Central	76.9%	23.1%	100.0%
	South East Coast	73.8%	26.2%	100.0%
	South West	69.0%	31.0%	100.0%
	West Midlands	75.6%	24.4%	100.0%
	Yorkshire & Humber	74.5%	25.5%	100.0%
	England (SHA unknown)	71.4%	28.6%	100.0%
Total	74.7%	25.3%	100.0%	

## 28. Health worker provided opportunity to come out

% within SHA

		Health worker provided opportunity to come out		Total
		No	Yes	
SHA	East of England	92.6%	7.4%	100.0%
	East Midlands	93.0%	7.0%	100.0%
	London	93.0%	7.0%	100.0%
	North East	94.1%	5.9%	100.0%
	North West	93.9%	6.1%	100.0%
	South Central	93.9%	6.1%	100.0%
	South East Coast	92.6%	7.4%	100.0%
	South West	93.0%	7.0%	100.0%
	West Midlands	94.7%	5.3%	100.0%
	Yorkshire & Humber	95.7%	4.3%	100.0%
	England (SHA unknown)	95.2%	4.8%	100.0%
Total	93.5%	6.5%	100.0%	



### 29. Health care worker welcomed partner at consultation

% within SHA

		Health care worker welcomed partners presence		Total
		No	Yes	
SHA	East of England	84.7%	15.3%	100.0%
	East Midlands	88.4%	11.6%	100.0%
	London	90.0%	10.0%	100.0%
	North East	89.1%	10.9%	100.0%
	North West	87.1%	12.9%	100.0%
	South Central	90.4%	9.6%	100.0%
	South East Coast	86.5%	13.5%	100.0%
	South West	84.2%	15.8%	100.0%
	West Midlands	86.4%	13.6%	100.0%
	Yorkshire & Humber	86.3%	13.7%	100.0%
	England (SHA unknown)	100.0%		100.0%
Total	87.7%	12.3%	100.0%	

### 30. Health care worker gave advice accounting for my sexuality

% within SHA

		Health care worker gave advice accounting for my sexuality		Total
		No	Yes	
SHA	East of England	88.9%	11.1%	100.0%
	East Midlands	88.1%	11.9%	100.0%
	London	86.8%	13.2%	100.0%
	North East	92.8%	7.2%	100.0%
	North West	91.5%	8.5%	100.0%
	South Central	89.3%	10.7%	100.0%
	South East Coast	90.8%	9.2%	100.0%
	South West	87.7%	12.3%	100.0%
	West Midlands	87.3%	12.7%	100.0%
	Yorkshire & Humber	93.3%	6.7%	100.0%
	England (SHA unknown)	95.2%	4.8%	100.0%
Total	89.2%	10.8%	100.0%	

**31. GP had a clear policy on confidentiality.**

% within SHA

		GP has clear confidentiality policy		Total
		No	Yes	
SHA	East of England	71.4%	28.6%	100.0%
	East Midlands	74.9%	25.1%	100.0%
	London	80.2%	19.8%	100.0%
	North East	71.0%	29.0%	100.0%
	North West	74.6%	25.4%	100.0%
	South Central	75.8%	24.2%	100.0%
	South East Coast	74.9%	25.1%	100.0%
	South West	74.1%	25.9%	100.0%
	West Midlands	77.5%	22.5%	100.0%
	Yorkshire & Humber	75.5%	24.5%	100.0%
	England (SHA unknown)	71.4%	28.6%	100.0%
Total	76.1%	23.9%	100.0%	

**32. GP surgery displayed non-discriminatory policy including sexual orientation**

% within SHA

		GP surgery displayed non-discriminatory policy including sexual orientation		Total
		No	Yes	
SHA	East of England	92.6%	7.4%	100.0%
	East Midlands	91.4%	8.6%	100.0%
	London	92.3%	7.7%	100.0%
	North East	91.9%	8.1%	100.0%
	North West	92.2%	7.8%	100.0%
	South Central	90.9%	9.1%	100.0%
	South East Coast	87.4%	12.6%	100.0%
	South West	90.6%	9.4%	100.0%
	West Midlands	90.9%	9.1%	100.0%
	Yorkshire & Humber	91.8%	8.2%	100.0%
	England (SHA unknown)	95.2%	4.8%	100.0%
Total	91.4%	8.6%	100.0%	

### 33. Attended specialist health service for lesbian or bisexual women

% within SHA

		Attended health service for lesbian or bisexual women in the last year		Total
		No	Yes	
SHA	East of England	99.0%	1.0%	100.0%
	East Midlands	99.5%	.5%	100.0%
	London	95.1%	4.9%	100.0%
	North East	99.1%	.9%	100.0%
	North West	99.0%	1.0%	100.0%
	South Central	98.6%	1.4%	100.0%
	South East Coast	99.1%	.9%	100.0%
	South West	98.7%	1.3%	100.0%
	West Midlands	99.5%	.5%	100.0%
	Yorkshire & Humber	99.5%	.5%	100.0%
	England (SHA unknown)	95.2%	4.8%	100.0%
Total	98.0%	2.0%	100.0%	

## **The Study:**

In 2007, Stonewall and De Montfort University asked lesbian and bisexual women from Great Britain to complete a survey about their health.

The survey received 6178 responses making it the biggest survey of lesbian and bisexual women's health needs in Europe.

Eighty one per cent of respondents said that they were lesbian, and sixteen per cent said they were bisexual. Eighty five per cent of respondents live in England, nine per cent in Scotland, and five per cent in Wales. Eighty two per cent of respondents are white British, and the rest are from ethnic minorities, which is comparable with the general population. Respondents come from a wide age-range. The youngest respondent was fourteen and the oldest was 84. Fourteen per cent of respondents say that they have a disability, including physical and mental disabilities.